



CAREERSOURCE FLORIDA NETWORK IMPACT

All data included is from July 1, 2024 - June 30, 2025 and was provided by FloridaCommerce.

LOCAL WORKFORCE PROGRAM SUPPORT



Serving Dixie, Gilchrist, Alachua, Bradford, Union, and Columbia counties.

1,039 Employ Florida participants served

203 WIOA Adult, Dislocated Workers, and Youth served

75%

of adults served by the WIOA Dislocated Worker program obtained an industry-recognized credential

50.9%

of adults served by the WIOA Adult program obtained an industry-recognized credential

\$25,974.63

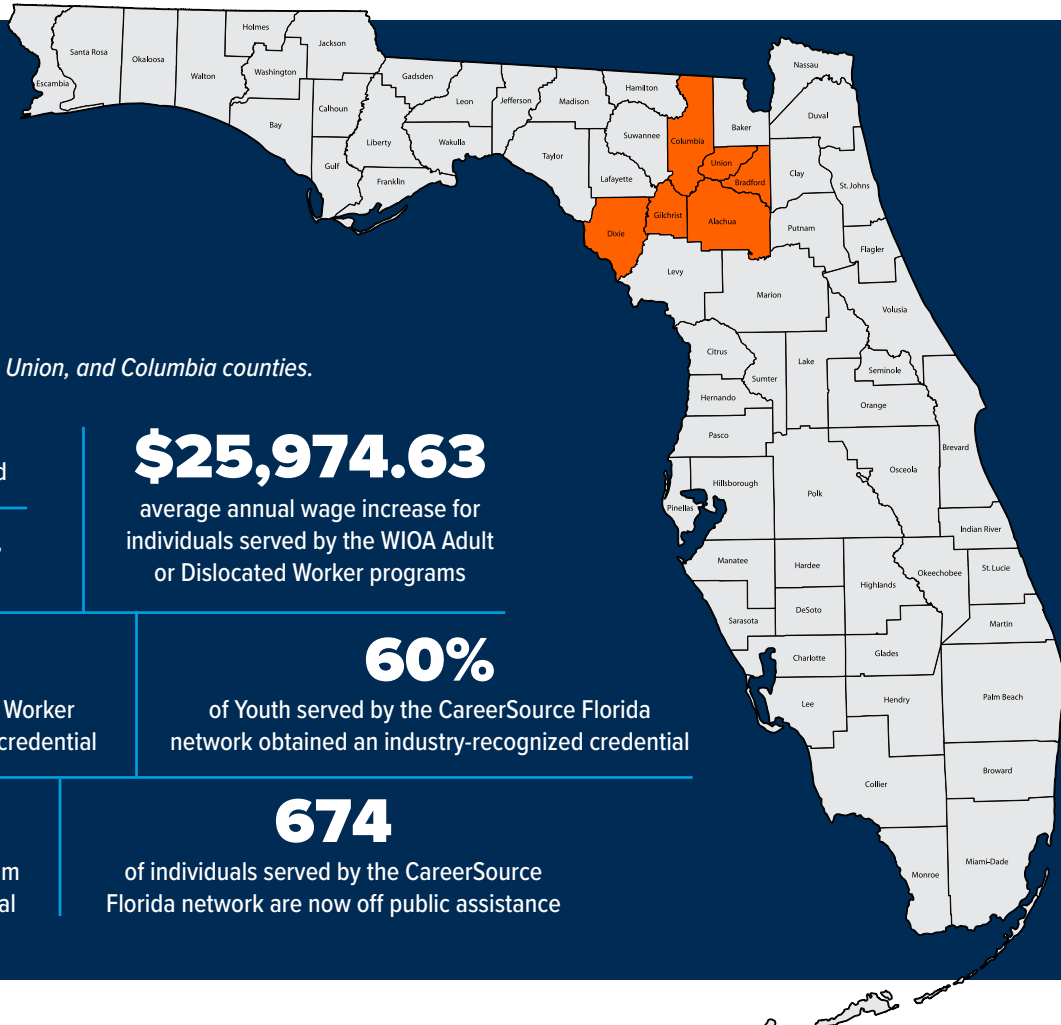
average annual wage increase for individuals served by the WIOA Adult or Dislocated Worker programs

60%

of Youth served by the CareerSource Florida network obtained an industry-recognized credential

674

of individuals served by the CareerSource Florida network are now off public assistance



TOP 30 HIGH-DEMAND CAREERS:

Regional projections through 2032.

- | | | | |
|---|--|---|--|
| 1. Registered Nurses | 9. Elementary School Teachers, Except Special Education | 16. Real Estate Sales Agents | 26. First-Line Supervisors of Mechanics, Installers, and Repairers |
| 2. General and Operations Managers | 10. Human Resources Specialists | 17. Project Management Specialists | 27. Clinical Laboratory Technologists and Technicians |
| 3. Industrial Truck and Tractor Operators | 11. Educational, Guidance, and Career Counselors and Advisors | 18. Coaches and Scouts | 28. Heating, Air Conditioning, and Refrigeration Mechanics and Installers |
| 4. Business Operations Specialists, All Other | 12. Sales Representatives, Wholesale and Manufacturing, Except Technical and Scientific Products | 19. Software Developers | 29. Insurance Sales Agents |
| 5. Managers, All Other | 13. First-Line Supervisors of Construction Trades and Extraction Workers | 20. Electricians | 30. Secondary School Teachers, Except Special and Career/Technical Education |
| 6. Accountants and Auditors | 14. Management Analysts | 21. Police and Sheriff's Patrol Officers | |
| 7. Sales Representatives of Services, Except Advertising, Insurance, Financial Services, and Travel | 15. Market Research Analysts and Marketing Specialists | 22. Executive Secretaries and Executive Administrative Assistants | |
| 8. Education Administrators, Postsecondary | | 23. Healthcare Social Workers | |
| | | 24. Licensed Practical and Licensed Vocational Nurses | |
| | | 25. Medical and Health Services Managers | |

Source: The Florida Chamber Foundation



SCAN TO LEARN MORE

careersourcencfl.com

A proud partner of the AmericanJobCenter network

CareerSource Florida is an equal opportunity employer/program. Auxiliary aids and services are available upon request to individuals with disabilities. Disponible en Español.



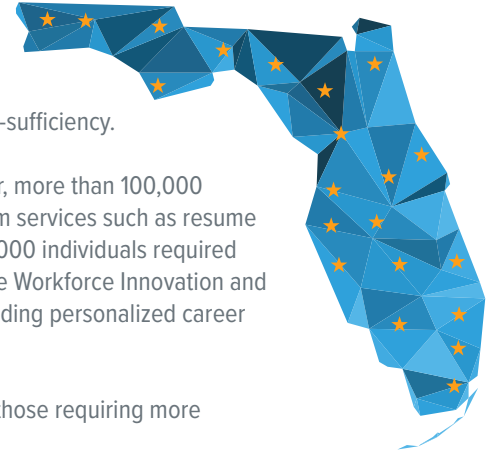
CAREERSOURCE FLORIDA NETWORK IMPACT

All data included is from July 1, 2024 - June 30, 2025 and was provided by FloridaCommerce.

CareerSource Florida is the Governor’s designated organization responsible for workforce policy and investment. Through policy guidance, we equip local workforce development boards with the resources they need to support job seekers and businesses on their journey to achieve economic self-sufficiency.

The CareerSource Florida network supports a wide range of job seekers with varying needs. Last year, more than 100,000 individuals received assistance funded by the Wagner-Peyser Act, which provides essential, short-term services such as resume writing and interview preparation to help individuals quickly enter the workforce. However, nearly 14,000 individuals required more intensive support to overcome significant barriers to employment. These services, funded by the Workforce Innovation and Opportunity Act (WIOA), are tailored to each individual and often involve long-term engagement, including personalized career planning, skills training, and connections to community resources.

This dual approach ensures we meet the immediate needs of many while offering deeper support to those requiring more comprehensive assistance to achieve lasting success in the job market.



STATEWIDE WORKFORCE PROGRAM SUPPORT

106,980 Employ Florida participants served

13,705 WIOA Adult, Dislocated Workers, and Youth served

35,909 of individuals served by the CareerSource Florida network are now off public assistance

\$15,885.28

average annual wage increase for individuals served by the WIOA Adult or Dislocated Worker programs

80.1%

of adults served by the WIOA Adult program obtained an industry-recognized credential

72.6% of Youth served by the CareerSource Florida network obtained an industry-recognized credential

83.3%

of adults served by the WIOA Dislocated Worker program obtained an industry-recognized credential

JOB SEEKER SUPPORT

1,027,988

Total number of services provided to Employ Florida and WIOA participants

Services to participants included:

913,548
Initial Career Services

Job search and job preparation assistance

190,464
Individualized Career Services

Career guidance and preparation, and work experience activities

6,557
Training Services

On-the-job training, apprenticeships, industry driven skills training, and customized employer training

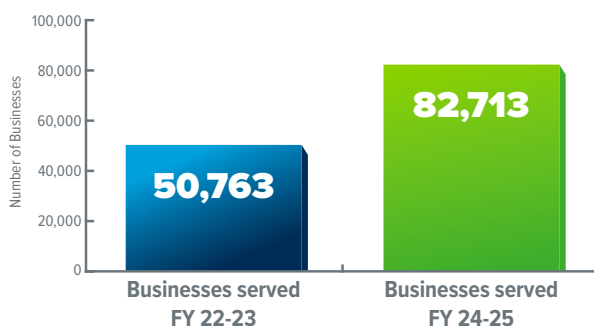
47.6%

of single parents (including single pregnant women) saw a quarterly wage increase

7,641

Veterans served

ADVANCING FLORIDA'S BUSINESSES



CareerSource Florida has experienced remarkable growth, serving over 82,713 businesses, which marks nearly a 63% increase compared to FY 22-23. Our efforts include collaborating with the Education and Industry Consortium to align educational programs with industry needs, maintaining a Master Credentials List to ensure that training programs meet the highest standards, and offering workforce training grants to support new and expanding businesses and their employees. By leaning into partnerships and strengthening connections between all players in the workforce development sphere, we are building a brighter future for Florida’s workforce.