



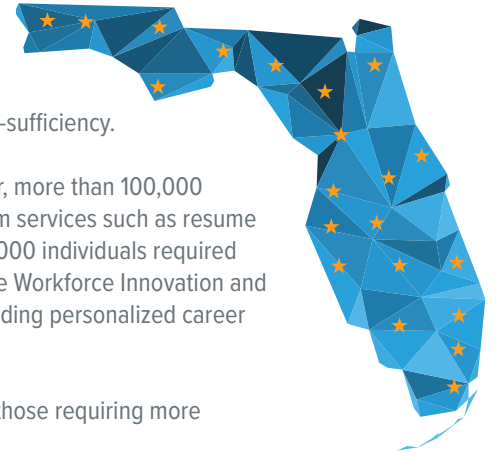
CAREERSOURCE FLORIDA NETWORK IMPACT

All data included is from July 1, 2024 - June 30, 2025 and was provided by FloridaCommerce.

CareerSource Florida is the Governor’s designated organization responsible for workforce policy and investment. Through policy guidance, we equip local workforce development boards with the resources they need to support job seekers and businesses on their journey to achieve economic self-sufficiency.

The CareerSource Florida network supports a wide range of job seekers with varying needs. Last year, more than 100,000 individuals received assistance funded by the Wagner-Peyser Act, which provides essential, short-term services such as resume writing and interview preparation to help individuals quickly enter the workforce. However, nearly 14,000 individuals required more intensive support to overcome significant barriers to employment. These services, funded by the Workforce Innovation and Opportunity Act (WIOA), are tailored to each individual and often involve long-term engagement, including personalized career planning, skills training, and connections to community resources.

This dual approach ensures we meet the immediate needs of many while offering deeper support to those requiring more comprehensive assistance to achieve lasting success in the job market.



STATEWIDE WORKFORCE PROGRAM SUPPORT

106,980 Employ Florida participants served

13,705 WIOA Adult, Dislocated Workers, and Youth served

\$15,885.28

average annual wage increase for individuals served by the WIOA Adult or Dislocated Worker programs

80.1%

of adults served by the WIOA Adult program obtained an industry-recognized credential

83.3%

of adults served by the WIOA Dislocated Worker program obtained an industry-recognized credential

35,909 of individuals served by the CareerSource Florida network are now off public assistance

72.6% of Youth served by the CareerSource Florida network obtained an industry-recognized credential

JOB SEEKER SUPPORT

1,027,988

Total number of services provided to Employ Florida and WIOA participants

Services to participants included:

913,548
Initial Career Services

Job search and job preparation assistance

190,464
Individualized Career Services

Career guidance and preparation, and work experience activities

6,557
Training Services

On-the-job training, apprenticeships, industry driven skills training, and customized employer training

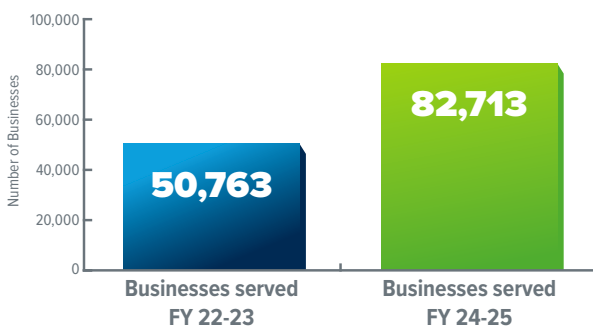
47.6%

of single parents (including single pregnant women) saw a quarterly wage increase

7,641

Veterans served

ADVANCING FLORIDA'S BUSINESSES



CareerSource Florida has experienced remarkable growth, serving over 82,713 businesses, which marks nearly a 63% increase compared to FY 22-23. Our efforts include collaborating with the Education and Industry Consortium to align educational programs with industry needs, maintaining a Master Credentials List to ensure that training programs meet the highest standards, and offering workforce training grants to support new and expanding businesses and their employees. By leaning into partnerships and strengthening connections between all players in the workforce development sphere, we are building a brighter future for Florida’s workforce.



CAREERSOURCE FLORIDA NETWORK IMPACT

All data included is from July 1, 2024 - June 30, 2025 and was provided by FloridaCommerce.

LOCAL WORKFORCE PROGRAM SUPPORT



Serving Escambia and Santa Rosa counties.

3,139 Employ Florida participants served

436 WIOA Adult, Dislocated Workers, and Youth served

60%

of adults served by the WIOA Dislocated Worker program obtained an industry-recognized credential

79.8%

of adults served by the WIOA Adult program obtained an industry-recognized credential

\$13,994.95

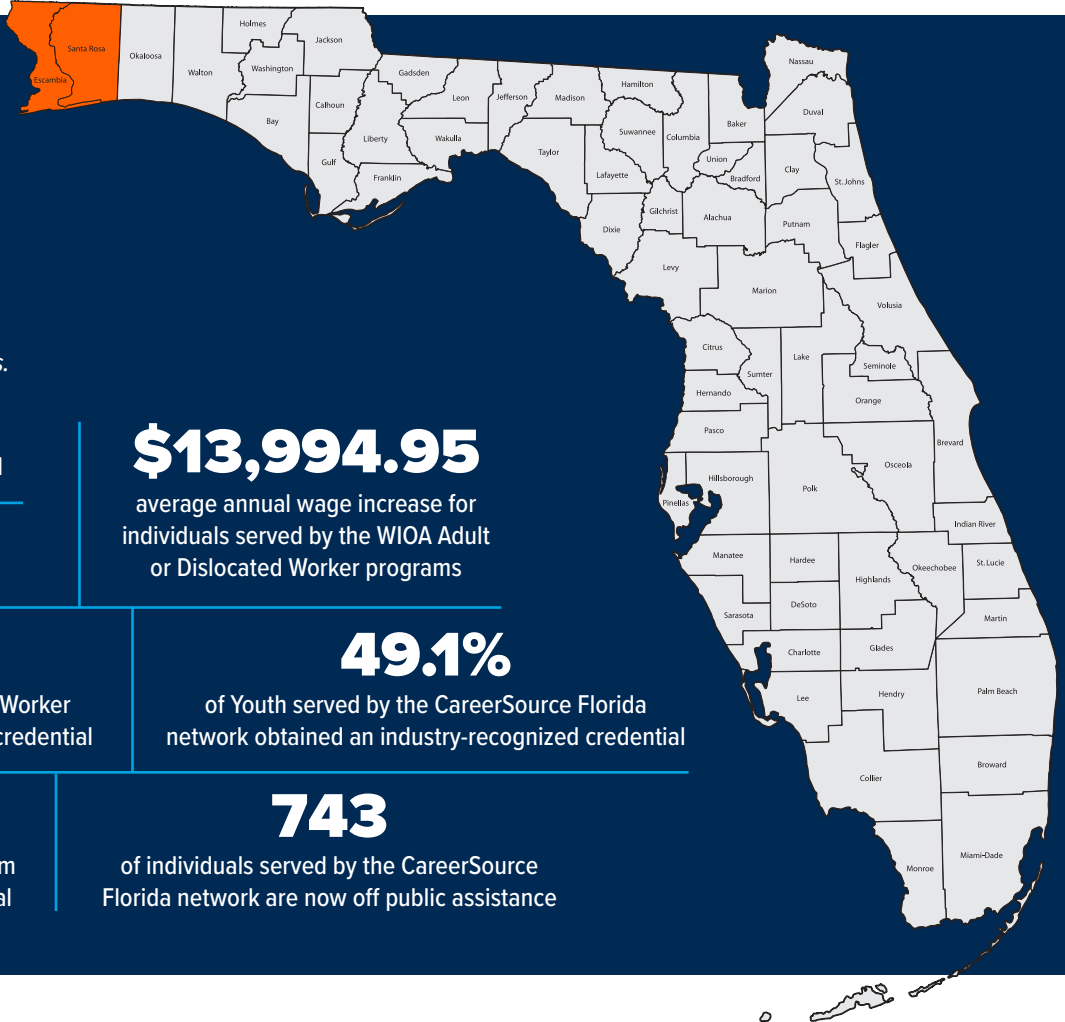
average annual wage increase for individuals served by the WIOA Adult or Dislocated Worker programs

49.1%

of Youth served by the CareerSource Florida network obtained an industry-recognized credential

743

of individuals served by the CareerSource Florida network are now off public assistance



TOP 30 HIGH-DEMAND CAREERS:

Regional projections through 2032.

- | | | | |
|---|---|--|--|
| 1. General and Operations Managers | 9. First-Line Supervisors of Construction Trades and Extraction Workers | 17. Real Estate Sales Agents | 25. Loan Interviewers and Clerks |
| 2. Registered Nurses | 10. Loan Officers | 18. Paralegals and Legal Assistants | 26. Plumbers, Pipefitters, and Steamfitters |
| 3. Management Analysts | 11. Securities, Commodities, and Financial Services Sales Agents | 19. Secondary School Teachers, Except Special and Career/Technical Education | 27. Special Education Teachers, Secondary School |
| 4. Business Operations Specialists, All Other | 12. Market Research Analysts and Marketing Specialists | 20. Police and Sheriff's Patrol Officers | 28. Computer Systems Analysts |
| 5. Accountants and Auditors | 13. Financial Managers | 21. First-Line Supervisors of Mechanics, Installers, and Repairers | 29. Training and Development Specialists |
| 6. Sales Representatives of Services, Except Advertising, Insurance, Financial Services, and Travel | 14. Human Resources Specialists | 22. Managers, All Other | 30. Construction Managers |
| 7. Software Developers | 15. Heating, Air Conditioning, and Refrigeration Mechanics and Installers | 23. Medical and Health Services Managers | |
| 8. Sales Representatives, Wholesale and Manufacturing, Except Technical and Scientific Products | 16. Project Management Specialists | 24. Licensed Practical and Licensed Vocational Nurses | |

Source: The Florida Chamber Foundation



SCAN TO LEARN MORE

careersourceflorida.com

A proud partner of the American Job Center network

CareerSource Florida is an equal opportunity employer/program. Auxiliary aids and services are available upon request to individuals with disabilities. Disponible en Español.



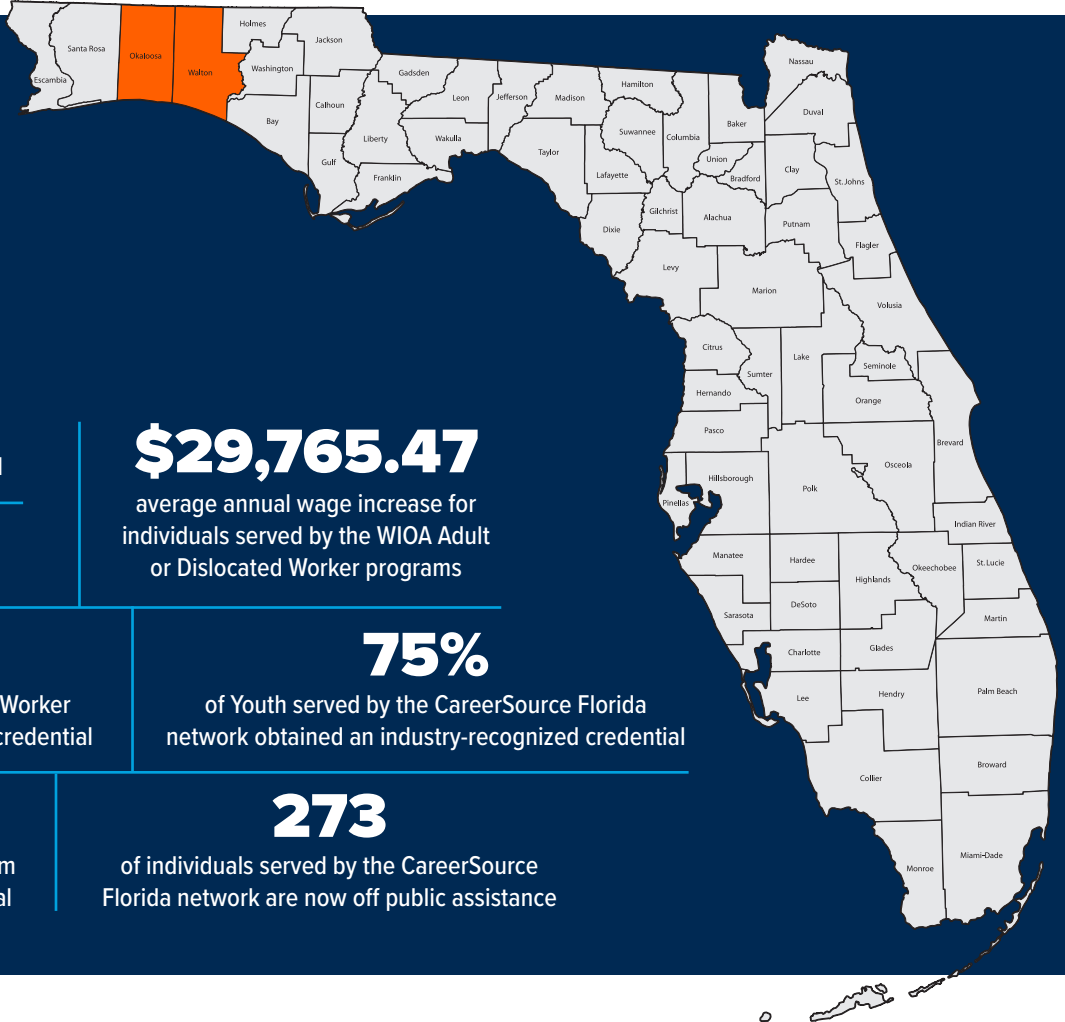
CAREERSOURCE FLORIDA NETWORK IMPACT

All data included is from July 1, 2024 - June 30, 2025 and was provided by FloridaCommerce.

LOCAL WORKFORCE PROGRAM SUPPORT



Serving Okaloosa and Walton counties.



1,430 Employ Florida participants served

177 WIOA Adult, Dislocated Workers, and Youth served

\$29,765.47

average annual wage increase for individuals served by the WIOA Adult or Dislocated Worker programs

92.9%

of adults served by the WIOA Dislocated Worker program obtained an industry-recognized credential

75%

of Youth served by the CareerSource Florida network obtained an industry-recognized credential

85.7%

of adults served by the WIOA Adult program obtained an industry-recognized credential

273

of individuals served by the CareerSource Florida network are now off public assistance

TOP 30 HIGH-DEMAND CAREERS:

Regional projections through 2032.

- General and Operations Managers
- Business Operations Specialists, All Other
- Management Analysts
- Sales Representatives of Services, Except Advertising, Insurance, Financial Services, and Travel
- Software Developers
- Accountants and Auditors
- Registered Nurses
- Real Estate Sales Agents
- Market Research Analysts and Marketing Specialists
- First-Line Supervisors of Construction Trades and Extraction Workers
- Computer Systems Analysts
- Property, Real Estate, and Community Association Managers
- Electricians
- Project Management Specialists
- Engineers, All Other
- Food Service Managers
- Managers, All Other
- Computer Occupations, All Other
- First-Line Supervisors of Mechanics, Installers, and Repairers
- Buyers and Purchasing Agents
- Sales Representatives, Wholesale and Manufacturing, Except Technical and Scientific Products
- Heating, Air Conditioning, and Refrigeration Mechanics and Installers
- Human Resources Specialists
- Computer User Support Specialists
- Veterinary Technologists and Technicians
- Police and Sheriff's Patrol Officers
- Dental Assistants
- Clergy
- Firefighters
- Licensed Practical and Licensed Vocational Nurses

Source: The Florida Chamber Foundation



SCAN TO LEARN MORE

careersourceflorida.com

A proud partner of the AmericanJobCenter network

CareerSource Florida is an equal opportunity employer/program. Auxiliary aids and services are available upon request to individuals with disabilities. Disponible en Español.



CAREERSOURCE FLORIDA NETWORK IMPACT

All data included is from July 1, 2024 - June 30, 2025 and was provided by FloridaCommerce.

LOCAL WORKFORCE PROGRAM SUPPORT



Serving Holmes, Washington, Jackson, Calhoun, and Liberty counties.

601 Employ Florida participants served

87 WIOA Adult, Dislocated Workers, and Youth served

100%

of adults served by the WIOA Dislocated Worker program obtained an industry-recognized credential

95.5%

of adults served by the WIOA Adult program obtained an industry-recognized credential

\$11,362.23

average annual wage increase for individuals served by the WIOA Adult or Dislocated Worker programs

78.9%

of Youth served by the CareerSource Florida network obtained an industry-recognized credential

229

of individuals served by the CareerSource Florida network are now off public assistance

TOP 30 HIGH-DEMAND CAREERS:

Regional projections through 2032.

- | | | | |
|---|---|--|---|
| 1. Heavy and Tractor-Trailer Truck Drivers | 9. Licensed Practical and Licensed Vocational Nurses | 17. Secondary School Teachers, Except Special and Career/Technical Education | 24. Project Management Specialists |
| 2. General and Operations Managers | 10. Accountants and Auditors | 18. Market Research Analysts and Marketing Specialists | 25. Postal Service Mail Carriers |
| 3. First-Line Supervisors of Retail Sales Workers | 11. Management Analysts | 19. Human Resources Specialists | 26. Heating, Air Conditioning, and Refrigeration Mechanics and Installers |
| 4. Registered Nurses | 12. Substance Abuse, Behavioral Disorder, and Mental Health Counselors | 20. First-Line Supervisors of Transportation and Material Moving Workers, Except Aircraft Cargo Handling Supervisors | 27. First-Line Supervisors of Mechanics, Installers, and Repairers |
| 5. Carpenters | 13. Business Operations Specialists, All Other | 21. Construction Managers | 28. Electricians |
| 6. Elementary School Teachers, Except Special Education | 14. Medical and Health Services Managers | 22. Engineers, All Other | 29. Real Estate Sales Agents |
| 7. First-Line Supervisors of Construction Trades and Extraction Workers | 15. Physical Therapist Assistants | 23. Sales Representatives of Services, Except Advertising, Insurance, Financial Services, and Travel | 30. Managers, All Other |
| 8. First-Line Supervisors of Office and Administrative Support Workers | 16. Middle School Teachers, Except Special and Career/Technical Education | | |

Source: The Florida Chamber Foundation



SCAN TO LEARN MORE

careersourceflorida.com

A proud partner of the AmericanJobCenter network

CareerSource Florida is an equal opportunity employer/program. Auxiliary aids and services are available upon request to individuals with disabilities. Disponible en Español.



CAREERSOURCE FLORIDA NETWORK IMPACT

All data included is from July 1, 2024 - June 30, 2025 and was provided by FloridaCommerce.

LOCAL WORKFORCE PROGRAM SUPPORT



Serving Bay, Gulf, and Franklin counties.

2,017 Employ Florida participants served

102 WIOA Adult, Dislocated Workers, and Youth served

100%

of adults served by the WIOA Dislocated Worker program obtained an industry-recognized credential

94.1%

of adults served by the WIOA Adult program obtained an industry-recognized credential

\$28,300.50

average annual wage increase for individuals served by the WIOA Adult or Dislocated Worker programs

71.4%

of Youth served by the CareerSource Florida network obtained an industry-recognized credential

422

of individuals served by the CareerSource Florida network are now off public assistance

TOP 30 HIGH-DEMAND CAREERS:

Regional projections through 2032.

- | | | | |
|---|---|---|--|
| 1. General and Operations Managers | 8. Sales Representatives, Wholesale and Manufacturing, Except Technical and Scientific Products | 16. Plumbers, Pipefitters, and Steamfitters | 25. Licensed Practical and Licensed Vocational Nurses |
| 2. First-Line Supervisors of Retail Sales Workers | 9. Accountants and Auditors | 17. Police and Sheriff's Patrol Officers | 26. Clergy |
| 3. Registered Nurses | 10. Electricians | 18. Food Service Managers | 27. Secondary School Teachers, Except Special and Career/Technical Education |
| 4. Business Operations Specialists, All Other | 11. Construction Managers | 19. Market Research Analysts and Marketing Specialists | 28. Managers, All Other |
| 5. Sales Representatives of Services, Except Advertising, Insurance, Financial Services, and Travel | 12. Elementary School Teachers, Except Special Education | 20. Buyers and Purchasing Agents | 29. Software Developers |
| 6. First-Line Supervisors of Construction Trades and Extraction Workers | 13. First-Line Supervisors of Mechanics, Installers, and Repairers | 21. Property, Real Estate, and Community Association Managers | 30. Paralegals and Legal Assistants |
| 7. Real Estate Sales Agents | 14. Management Analysts | 22. Human Resources Specialists | |
| | 15. Project Management Specialists | 23. Insurance Sales Agents | |
| | | 24. Logisticians | |

Source: The Florida Chamber Foundation



SCAN TO LEARN MORE

careersourceflorida.com

A proud partner of the AmericanJobCenter network

CareerSource Florida is an equal opportunity employer/program. Auxiliary aids and services are available upon request to individuals with disabilities. Disponible en Español.

All data included is from July 1, 2024 - June 30, 2025 and was provided by FloridaCommerce.

LOCAL WORKFORCE PROGRAM SUPPORT



Serving Gadsden, Leon, Wakulla, and Jefferson counties.

2,893 Employ Florida
participants served

127 WIOA Adult, Dislocated Workers,
and Youth served

\$14,693.36

average annual wage increase for
individuals served by the WIOA Adult
or Dislocated Worker programs

41.7%

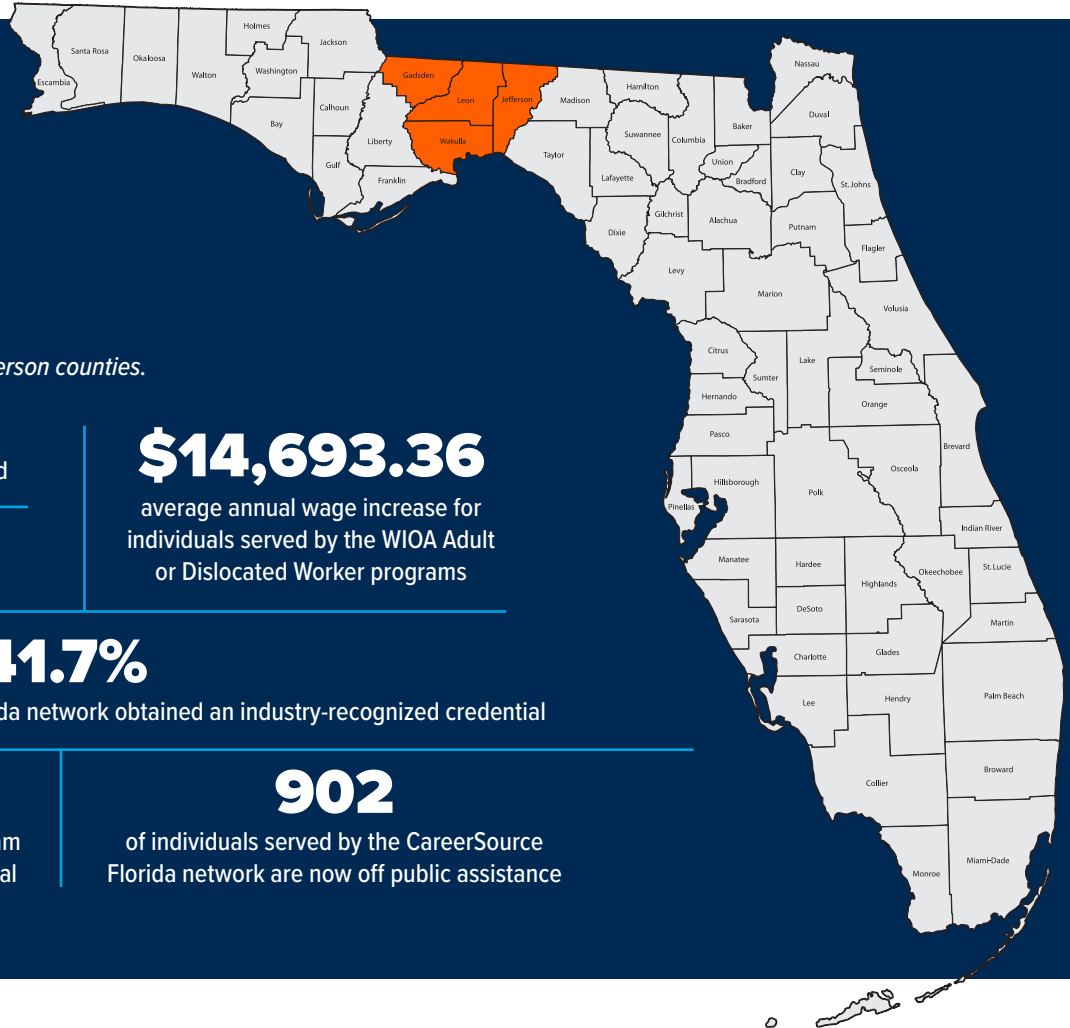
of Youth served by the CareerSource Florida network obtained an industry-recognized credential

77.1%

of adults served by the WIOA Adult program
obtained an industry-recognized credential

902

of individuals served by the CareerSource
Florida network are now off public assistance



TOP 30 HIGH-DEMAND CAREERS:

Regional projections through 2032.

1. Management Analysts
2. General and Operations Managers
3. Accountants and Auditors
4. Business Operations Specialists, All Other
5. Registered Nurses
6. Managers, All Other
7. Sales Representatives of Services, Except Advertising, Insurance, Financial Services, and Travel
8. Paralegals and Legal Assistants
9. Human Resources Specialists
10. Project Management Specialists
11. Sales Representatives, Wholesale and Manufacturing, Except Technical and Scientific Products
12. Software Developers
13. Market Research Analysts and Marketing Specialists
14. Executive Secretaries and Executive Administrative Assistants
15. Lawyers
16. First-Line Supervisors of Construction Trades and Extraction Workers
17. Computer Systems Analysts
18. Public Relations Specialists
19. Licensed Practical and Licensed Vocational Nurses
20. Financial Managers
21. Elementary School Teachers, Except Special Education
22. First-Line Supervisors of Mechanics, Installers, and Repairers
23. Medical and Health Services Managers
24. Construction Managers
25. Food Service Managers
26. Property, Real Estate, and Community Association Managers
27. Police and Sheriff's Patrol Officers
28. Claims Adjusters, Examiners, and Investigators
29. Computer Programmers
30. Training and Development Specialists

Source: The Florida Chamber
Foundation



SCAN TO
LEARN MORE

careersourceflorida.com

A proud partner of the  American Job Center network

CareerSource Florida is an equal opportunity employer/program. Auxiliary aids and services are available upon request to individuals with disabilities. Disponible en Español.



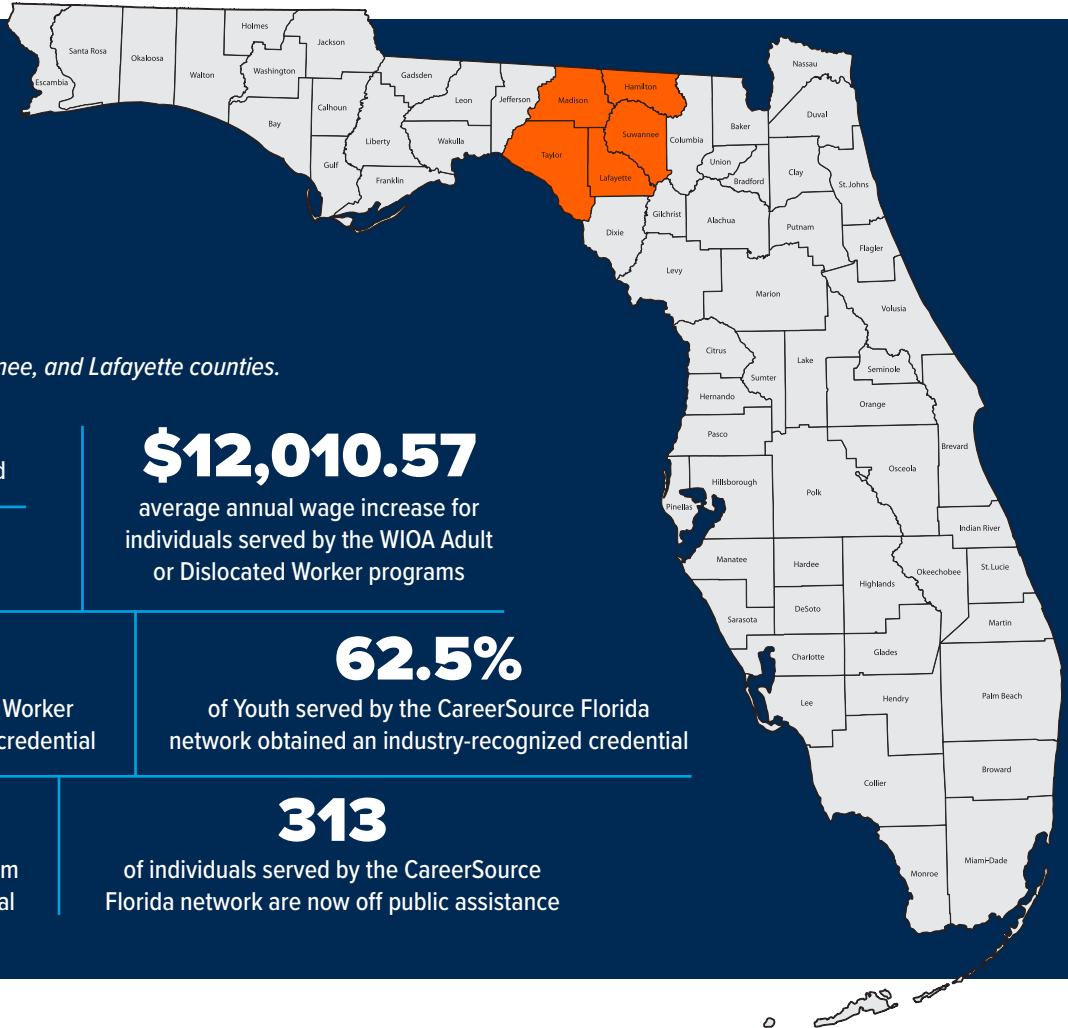
CAREERSOURCE FLORIDA NETWORK IMPACT

All data included is from July 1, 2024 - June 30, 2025 and was provided by FloridaCommerce.

LOCAL WORKFORCE PROGRAM SUPPORT



Serving Madison, Taylor, Hamilton, Suwannee, and Lafayette counties.



1,646 Employ Florida participants served

199 WIOA Adult, Dislocated Workers, and Youth served

\$12,010.57

average annual wage increase for individuals served by the WIOA Adult or Dislocated Worker programs

100%

of adults served by the WIOA Dislocated Worker program obtained an industry-recognized credential

62.5%

of Youth served by the CareerSource Florida network obtained an industry-recognized credential

81.4%

of adults served by the WIOA Adult program obtained an industry-recognized credential

313

of individuals served by the CareerSource Florida network are now off public assistance

TOP 30 HIGH-DEMAND CAREERS:

Regional projections through 2032.

- Heavy and Tractor-Trailer Truck Drivers
- General and Operations Managers
- Welders, Cutters, Solderers, and Brazers
- First-Line Supervisors of Office and Administrative Support Workers
- First-Line Supervisors of Production and Operating Workers
- Elementary School Teachers, Except Special Education
- Registered Nurses
- Licensed Practical and Licensed Vocational Nurses
- Sales Representatives, Wholesale and Manufacturing, Except Technical and Scientific Products
- Industrial Machinery Mechanics
- First-Line Supervisors of Construction Trades and Extraction Workers
- Accountants and Auditors
- Sales Representatives of Services, Except Advertising, Insurance, Financial Services, and Travel
- Human Resources Specialists
- Electricians
- First-Line Supervisors of Mechanics, Installers, and Repairers
- Production Workers, All Other
- First-Line Supervisors of Transportation and Material Moving Workers, Except Aircraft Cargo Handling Supervisors
- Postal Service Mail Carriers
- Construction Managers
- First-Line Supervisors of Farming, Fishing, and Forestry Workers
- Medical and Health Services Managers
- Plumbers, Pipefitters, and Steamfitters
- Project Management Specialists
- Managers, All Other
- Business Operations Specialists, All Other
- Food Service Managers
- Market Research Analysts and Marketing Specialists
- Bus and Truck Mechanics and Diesel Engine Specialists
- Buyers and Purchasing Agents

Source: The Florida Chamber Foundation



SCAN TO LEARN MORE

careersourceflorida.com

A proud partner of the AmericanJobCenter network

CareerSource Florida is an equal opportunity employer/program. Auxiliary aids and services are available upon request to individuals with disabilities. Disponible en Español.



CAREERSOURCE FLORIDA NETWORK IMPACT

All data included is from July 1, 2024 - June 30, 2025 and was provided by FloridaCommerce.

LOCAL WORKFORCE PROGRAM SUPPORT



Serving Dixie, Gilchrist, Alachua, Bradford, Union, and Columbia counties.

1,039 Employ Florida participants served

203 WIOA Adult, Dislocated Workers, and Youth served

\$25,974.63

average annual wage increase for individuals served by the WIOA Adult or Dislocated Worker programs

75%

of adults served by the WIOA Dislocated Worker program obtained an industry-recognized credential

60%

of Youth served by the CareerSource Florida network obtained an industry-recognized credential

50.9%

of adults served by the WIOA Adult program obtained an industry-recognized credential

674

of individuals served by the CareerSource Florida network are now off public assistance

TOP 30 HIGH-DEMAND CAREERS:

Regional projections through 2032.

- | | | | |
|---|--|---|--|
| 1. Registered Nurses | 9. Elementary School Teachers, Except Special Education | 16. Real Estate Sales Agents | 26. First-Line Supervisors of Mechanics, Installers, and Repairers |
| 2. General and Operations Managers | 10. Human Resources Specialists | 17. Project Management Specialists | 27. Clinical Laboratory Technologists and Technicians |
| 3. Industrial Truck and Tractor Operators | 11. Educational, Guidance, and Career Counselors and Advisors | 18. Coaches and Scouts | 28. Heating, Air Conditioning, and Refrigeration Mechanics and Installers |
| 4. Business Operations Specialists, All Other | 12. Sales Representatives, Wholesale and Manufacturing, Except Technical and Scientific Products | 19. Software Developers | 29. Insurance Sales Agents |
| 5. Managers, All Other | 13. First-Line Supervisors of Construction Trades and Extraction Workers | 20. Electricians | 30. Secondary School Teachers, Except Special and Career/Technical Education |
| 6. Accountants and Auditors | 14. Management Analysts | 21. Police and Sheriff's Patrol Officers | |
| 7. Sales Representatives of Services, Except Advertising, Insurance, Financial Services, and Travel | 15. Market Research Analysts and Marketing Specialists | 22. Executive Secretaries and Executive Administrative Assistants | |
| 8. Education Administrators, Postsecondary | | 23. Healthcare Social Workers | |
| | | 24. Licensed Practical and Licensed Vocational Nurses | |
| | | 25. Medical and Health Services Managers | |

Source: The Florida Chamber Foundation



SCAN TO LEARN MORE

careersourceflorida.com

A proud partner of the American Job Center network

CareerSource Florida is an equal opportunity employer/program. Auxiliary aids and services are available upon request to individuals with disabilities. Disponible en Español.



CAREERSOURCE FLORIDA NETWORK IMPACT

All data included is from July 1, 2024 - June 30, 2025 and was provided by FloridaCommerce.

LOCAL WORKFORCE PROGRAM SUPPORT



Serving Baker, Nassau, Duval, Clay, St. Johns, and Putnam counties.

5,516 Employ Florida participants served

887 WIOA Adult, Dislocated Workers, and Youth served

87%

of adults served by the WIOA Dislocated Worker program obtained an industry-recognized credential

87.6%

of adults served by the WIOA Adult program obtained an industry-recognized credential

\$21,928.58

average annual wage increase for individuals served by the WIOA Adult or Dislocated Worker programs

82.2%

of Youth served by the CareerSource Florida network obtained an industry-recognized credential

2,391

of individuals served by the CareerSource Florida network are now off public assistance

TOP 30 HIGH-DEMAND CAREERS:

Regional projections through 2032.

- Heavy and Tractor-Trailer Truck Drivers
- General and Operations Managers
- Registered Nurses
- First-Line Supervisors of Retail Sales Workers
- Accountants and Auditors
- Sales Representatives of Services, Except Advertising, Insurance, Financial Services, and Travel
- Management Analysts
- Business Operations Specialists, All Other
- Sales Representatives, Wholesale and Manufacturing, Except Technical and Scientific Products
- Elementary School Teachers, Except Special Education
- Human Resources Specialists
- Carpenters
- Market Research Analysts and Marketing Specialists
- First-Line Supervisors of Construction Trades and Extraction Workers
- Software Developers
- Project Management Specialists
- Real Estate Sales Agents
- Electricians
- Securities, Commodities, and Financial Services Sales Agents
- Managers, All Other
- Construction Managers
- Plumbers, Pipefitters, and Steamfitters
- Insurance Sales Agents
- Computer User Support Specialists
- Financial Managers
- First-Line Supervisors of Mechanics, Installers, and Repairers
- Food Service Managers
- Claims Adjusters, Examiners, and Investigators
- Licensed Practical and Licensed Vocational Nurses
- Paralegals and Legal Assistants

Source: The Florida Chamber Foundation



SCAN TO LEARN MORE

careersourceflorida.com

A proud partner of the AmericanJobCenter network

CareerSource Florida is an equal opportunity employer/program. Auxiliary aids and services are available upon request to individuals with disabilities. Disponible en Español.



CAREERSOURCE FLORIDA NETWORK IMPACT

All data included is from July 1, 2024 - June 30, 2025 and was provided by FloridaCommerce.

LOCAL WORKFORCE PROGRAM SUPPORT



Serving Citrus, Levy, and Marion counties.

1,651 Employ Florida participants served

549 WIOA Adult, Dislocated Workers, and Youth served

\$13,818.19

average annual wage increase for individuals served by the WIOA Adult or Dislocated Worker programs

86.8%

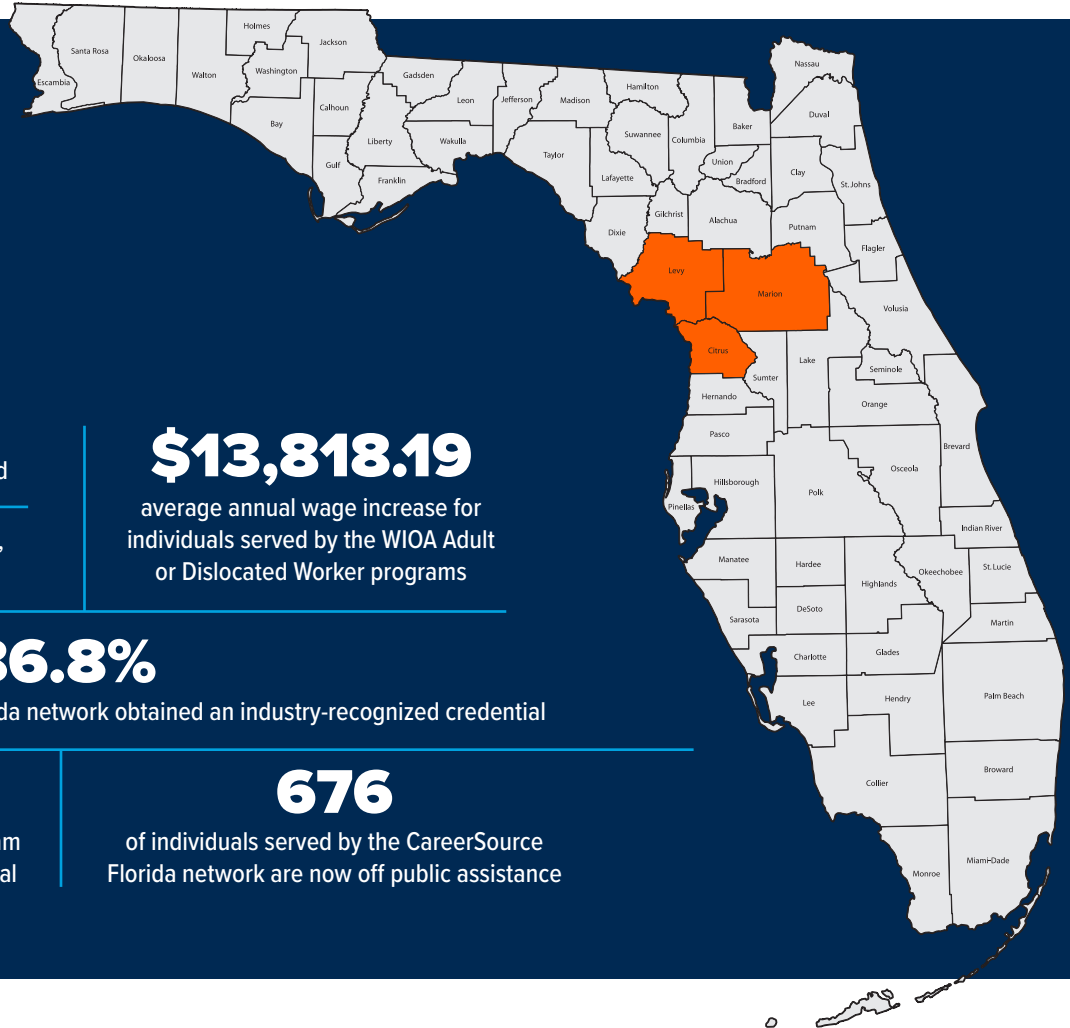
of Youth served by the CareerSource Florida network obtained an industry-recognized credential

59.4%

of adults served by the WIOA Adult program obtained an industry-recognized credential

676

of individuals served by the CareerSource Florida network are now off public assistance



TOP 30 HIGH-DEMAND CAREERS:

Regional projections through 2032.

- | | | | |
|---|--|--|--|
| 1. General and Operations Managers | 8. Accountants and Auditors | 16. Licensed Practical and Licensed Vocational Nurses | 24. Managers, All Other |
| 2. Heavy and Tractor-Trailer Truck Drivers | 9. Elementary School Teachers, Except Special Education | 17. First-Line Supervisors of Production and Operating Workers | 25. Human Resources Specialists |
| 3. Registered Nurses | 10. Electricians | 18. Real Estate Sales Agents | 26. Food Service Managers |
| 4. First-Line Supervisors of Office and Administrative Support Workers | 11. Teachers and Instructors, All Other | 19. Business Operations Specialists, All Other | 27. Firefighters |
| 5. Sales Representatives, Wholesale and Manufacturing, Except Technical and Scientific Products | 12. Police and Sheriff's Patrol Officers | 20. Market Research Analysts and Marketing Specialists | 28. Medical and Health Services Managers |
| 6. Sales Representatives of Services, Except Advertising, Insurance, Financial Services, and Travel | 13. Property, Real Estate, and Community Association Managers | 21. Construction Managers | 29. Buyers and Purchasing Agents |
| 7. First-Line Supervisors of Construction Trades and Extraction Workers | 14. First-Line Supervisors of Mechanics, Installers, and Repairers | 22. Project Management Specialists | 30. Insurance Sales Agents |
| | 15. Secondary School Teachers, Except Special and Career/Technical Education | 23. Securities, Commodities, and Financial Services Sales Agents | |

Source: The Florida Chamber Foundation



SCAN TO LEARN MORE

careersourceflorida.com

A proud partner of the AmericanJobCenter network

CareerSource Florida is an equal opportunity employer/program. Auxiliary aids and services are available upon request to individuals with disabilities. Disponible en Español.



CAREERSOURCE FLORIDA NETWORK IMPACT

All data included is from July 1, 2024 - June 30, 2025 and was provided by FloridaCommerce.

LOCAL WORKFORCE PROGRAM SUPPORT



Serving Sumter, Lake, Seminole, Orange, and Osceola counties.

11,039 Employ Florida participants served

1,797 WIOA Adult, Dislocated Workers, and Youth served

\$10,994.64

average annual wage increase for individuals served by the WIOA Adult or Dislocated Worker programs

73.4%

of adults served by the WIOA Dislocated Worker program obtained an industry-recognized credential

69.2%

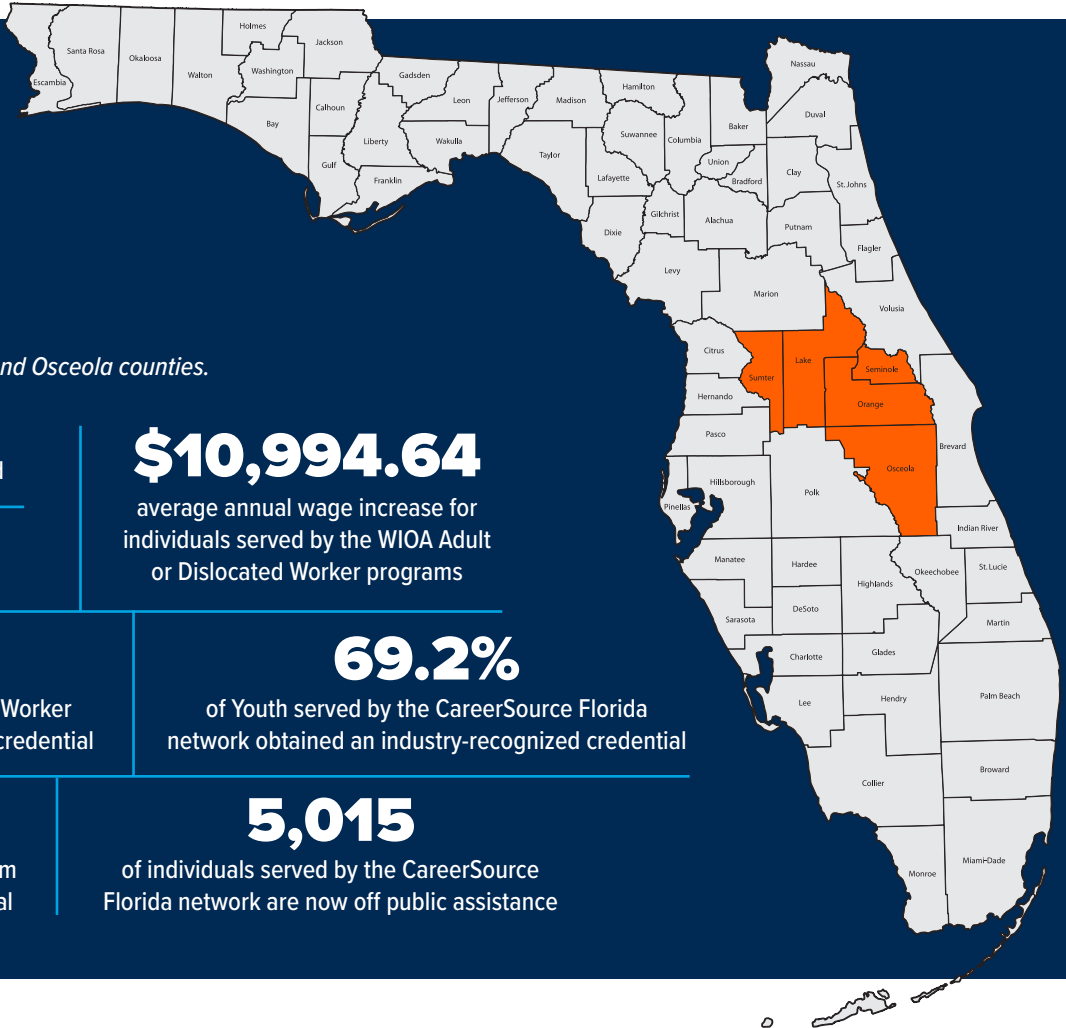
of Youth served by the CareerSource Florida network obtained an industry-recognized credential

76.9%

of adults served by the WIOA Adult program obtained an industry-recognized credential

5,015

of individuals served by the CareerSource Florida network are now off public assistance



TOP 30 HIGH-DEMAND CAREERS:

Regional projections through 2032.

- | | | | |
|---|---|--|---|
| 1. General and Operations Managers | 8. Sales Representatives, Wholesale and Manufacturing, Except Technical and Scientific Products | 16. Carpenters | 24. Teachers and Instructors, All Other |
| 2. Heavy and Tractor-Trailer Truck Drivers | 9. Software Developers | 17. Insurance Sales Agents | 25. Flight Attendants |
| 3. Sales Representatives of Services, Except Advertising, Insurance, Financial Services, and Travel | 10. Market Research Analysts and Marketing Specialists | 18. Paralegals and Legal Assistants | 26. Police and Sheriff's Patrol Officers |
| 4. Registered Nurses | 11. Business Operations Specialists, All Other | 19. Computer User Support Specialists | 27. Property, Real Estate, and Community Association Managers |
| 5. First-Line Supervisors of Office and Administrative Support Workers | 12. Project Management Specialists | 20. Electricians | 28. Food Service Managers |
| 6. First-Line Supervisors of Retail Sales Workers | 13. Human Resources Specialists | 21. Managers, All Other | 29. Construction Managers |
| 7. Accountants and Auditors | 14. Management Analysts | 22. Elementary School Teachers, Except Special Education | 30. Dental Assistants |
| | 15. First-Line Supervisors of Construction Trades and Extraction Workers | 23. First-Line Supervisors of Transportation and Material Moving Workers, Except Aircraft Cargo Handling Supervisors | |

Source: The Florida Chamber Foundation



SCAN TO LEARN MORE

careersourceflorida.com

A proud partner of the AmericanJobCenter network

CareerSource Florida is an equal opportunity employer/program. Auxiliary aids and services are available upon request to individuals with disabilities. Disponible en Español.



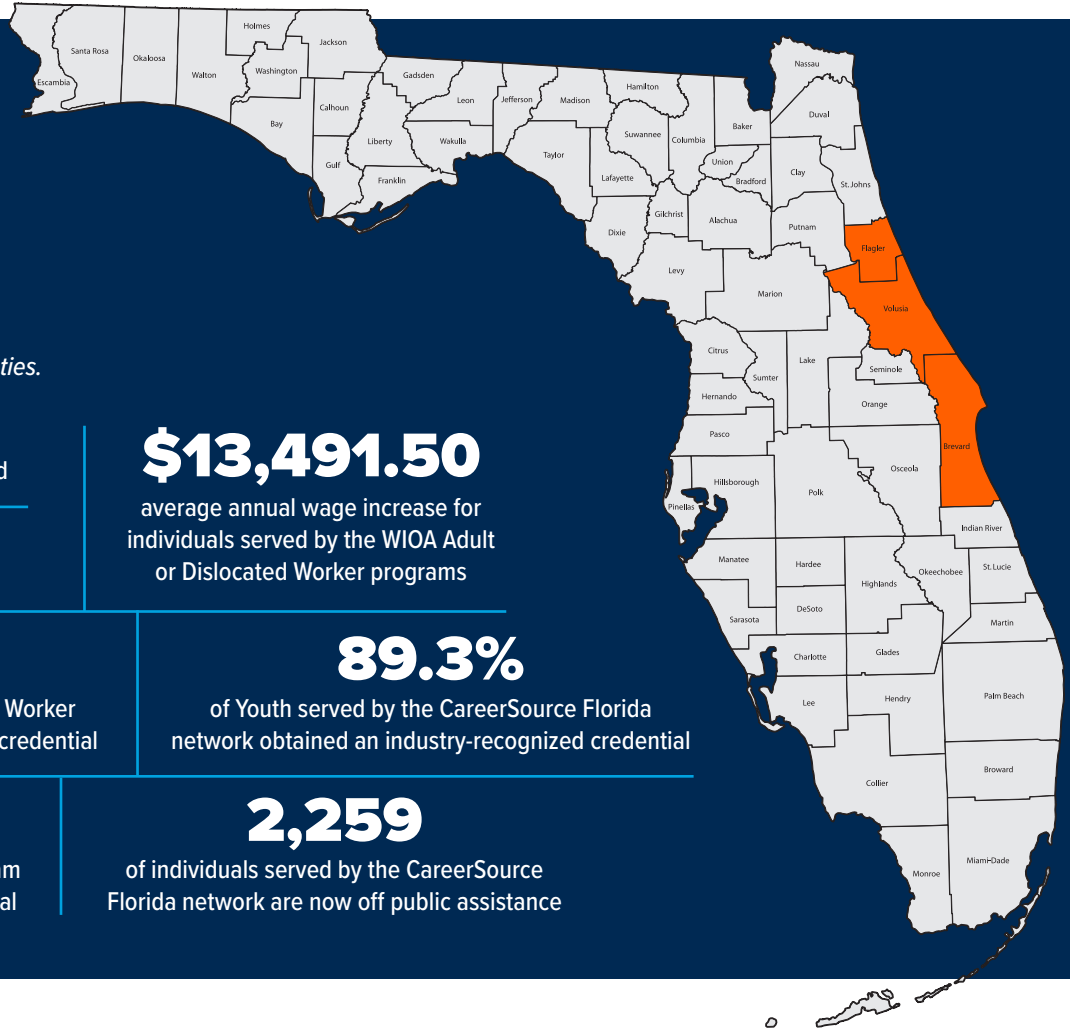
CAREERSOURCE FLORIDA NETWORK IMPACT

All data included is from July 1, 2024 - June 30, 2025 and was provided by FloridaCommerce.

LOCAL WORKFORCE PROGRAM SUPPORT



Serving Brevard, Flagler, and Volusia counties.



6,710 Employ Florida participants served

761 WIOA Adult, Dislocated Workers, and Youth served

\$13,491.50

average annual wage increase for individuals served by the WIOA Adult or Dislocated Worker programs

88.9%

of adults served by the WIOA Dislocated Worker program obtained an industry-recognized credential

89.3%

of Youth served by the CareerSource Florida network obtained an industry-recognized credential

81.9%

of adults served by the WIOA Adult program obtained an industry-recognized credential

2,259

of individuals served by the CareerSource Florida network are now off public assistance

TOP 30 HIGH-DEMAND CAREERS:

Regional projections through 2032.

- | | | | |
|---|---|--|--|
| 1. General and Operations Managers | 9. Sales Representatives, Wholesale and Manufacturing, Except Technical and Scientific Products | 17. Electricians | 26. Computer User Support Specialists |
| 2. Registered Nurses | 10. Project Management Specialists | 18. Human Resources Specialists | 27. Middle School Teachers, Except Special and Career/Technical Education |
| 3. First-Line Supervisors of Office and Administrative Support Workers | 11. Elementary School Teachers, Except Special Education | 19. Secondary School Teachers, Except Special and Career/Technical Education | 28. First-Line Supervisors of Mechanics, Installers, and Repairers |
| 4. Heavy and Tractor-Trailer Truck Drivers | 12. First-Line Supervisors of Construction Trades and Extraction Workers | 20. Buyers and Purchasing Agents | 29. First-Line Supervisors of Transportation and Material Moving Workers, Except Aircraft Cargo Handling Supervisors |
| 5. Insurance Sales Agents | 13. Real Estate Sales Agents | 21. Managers, All Other | 30. Industrial Engineers |
| 6. Software Developers | 14. Business Operations Specialists, All Other | 22. Food Service Managers | |
| 7. Sales Representatives of Services, Except Advertising, Insurance, Financial Services, and Travel | 15. Management Analysts | 23. First-Line Supervisors of Production and Operating Workers | |
| 8. Accountants and Auditors | 16. Market Research Analysts and Marketing Specialists | 24. Licensed Practical and Licensed Vocational Nurses | |
| | | 25. Heating, Air Conditioning, and Refrigeration Mechanics and Installers | |

Source: The Florida Chamber Foundation



SCAN TO LEARN MORE

careersourceflorida.com

A proud partner of the AmericanJobCenter network

CareerSource Florida is an equal opportunity employer/program. Auxiliary aids and services are available upon request to individuals with disabilities. Disponible en Español.



CAREERSOURCE FLORIDA NETWORK IMPACT

All data included is from July 1, 2024 - June 30, 2025 and was provided by FloridaCommerce.

LOCAL WORKFORCE PROGRAM SUPPORT



Serving Pasco and Hernando counties.

5,765 Employ Florida participants served

461 WIOA Adult, Dislocated Workers, and Youth served

91.7%

of adults served by the WIOA Dislocated Worker program obtained an industry-recognized credential

92.2%

of adults served by the WIOA Adult program obtained an industry-recognized credential

\$11,161.04

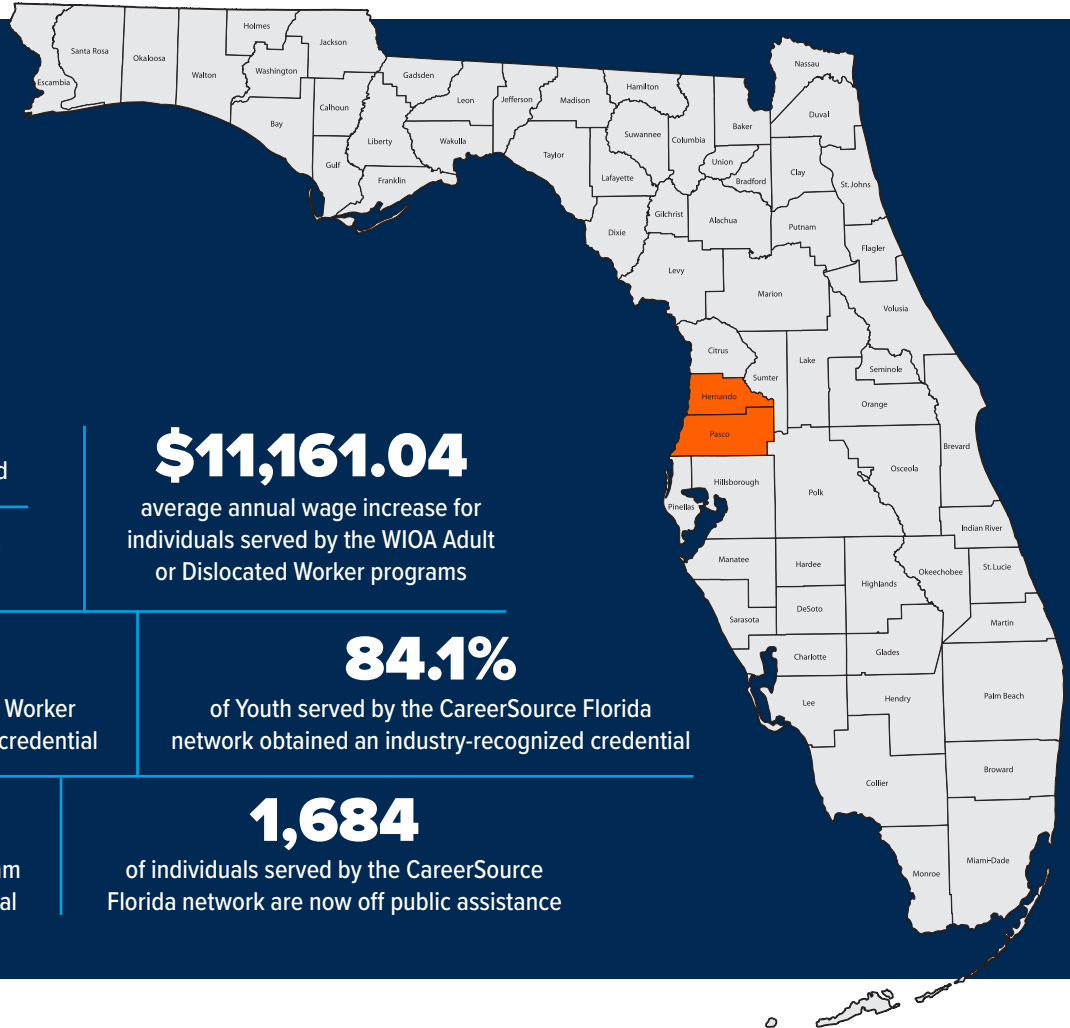
average annual wage increase for individuals served by the WIOA Adult or Dislocated Worker programs

84.1%

of Youth served by the CareerSource Florida network obtained an industry-recognized credential

1,684

of individuals served by the CareerSource Florida network are now off public assistance



TOP 30 HIGH-DEMAND CAREERS:

Regional projections through 2032.

- General and Operations Managers
- Registered Nurses
- Heavy and Tractor-Trailer Truck Drivers
- First-Line Supervisors of Retail Sales Workers
- Elementary School Teachers, Except Special Education
- Sales Representatives of Services, Except Advertising, Insurance, Financial Services, and Travel
- Sales Representatives, Wholesale and Manufacturing, Except Technical and Scientific Products
- First-Line Supervisors of Construction Trades and Extraction Workers
- Carpenters
- Police and Sheriff's Patrol Officers
- Accountants and Auditors
- Heating, Air Conditioning, and Refrigeration Mechanics and Installers
- Secondary School Teachers, Except Special and Career/Technical Education
- Operating Engineers and Other Construction Equipment Operators
- Real Estate Sales Agents
- Industrial Truck and Tractor Operators
- Clinical Laboratory Technologists and Technicians
- Management Analysts
- Licensed Practical and Licensed Vocational Nurses
- Medical and Health Services Managers
- Human Resources Specialists
- Market Research Analysts and Marketing Specialists
- Middle School Teachers, Except Special and Career/Technical Education
- Business Operations Specialists, All Other
- Food Service Managers
- Electricians
- Construction Managers
- Roofers
- Dental Assistants
- Insurance Sales Agents

Source: The Florida Chamber Foundation



SCAN TO LEARN MORE

careersourceflorida.com

A proud partner of the American Job Center network

CareerSource Florida is an equal opportunity employer/program. Auxiliary aids and services are available upon request to individuals with disabilities. Disponible en Español.



CAREERSOURCE FLORIDA NETWORK IMPACT

All data included is from July 1, 2024 - June 30, 2025 and was provided by FloridaCommerce.

LOCAL WORKFORCE PROGRAM SUPPORT



Serving Hillsborough and Pinellas counties.

14,992 Employ Florida participants served

1,371 WIOA Adult, Dislocated Workers, and Youth served

80.7%

of adults served by the WIOA Dislocated Worker program obtained an industry-recognized credential

74.3%

of adults served by the WIOA Adult program obtained an industry-recognized credential

\$16,580.08

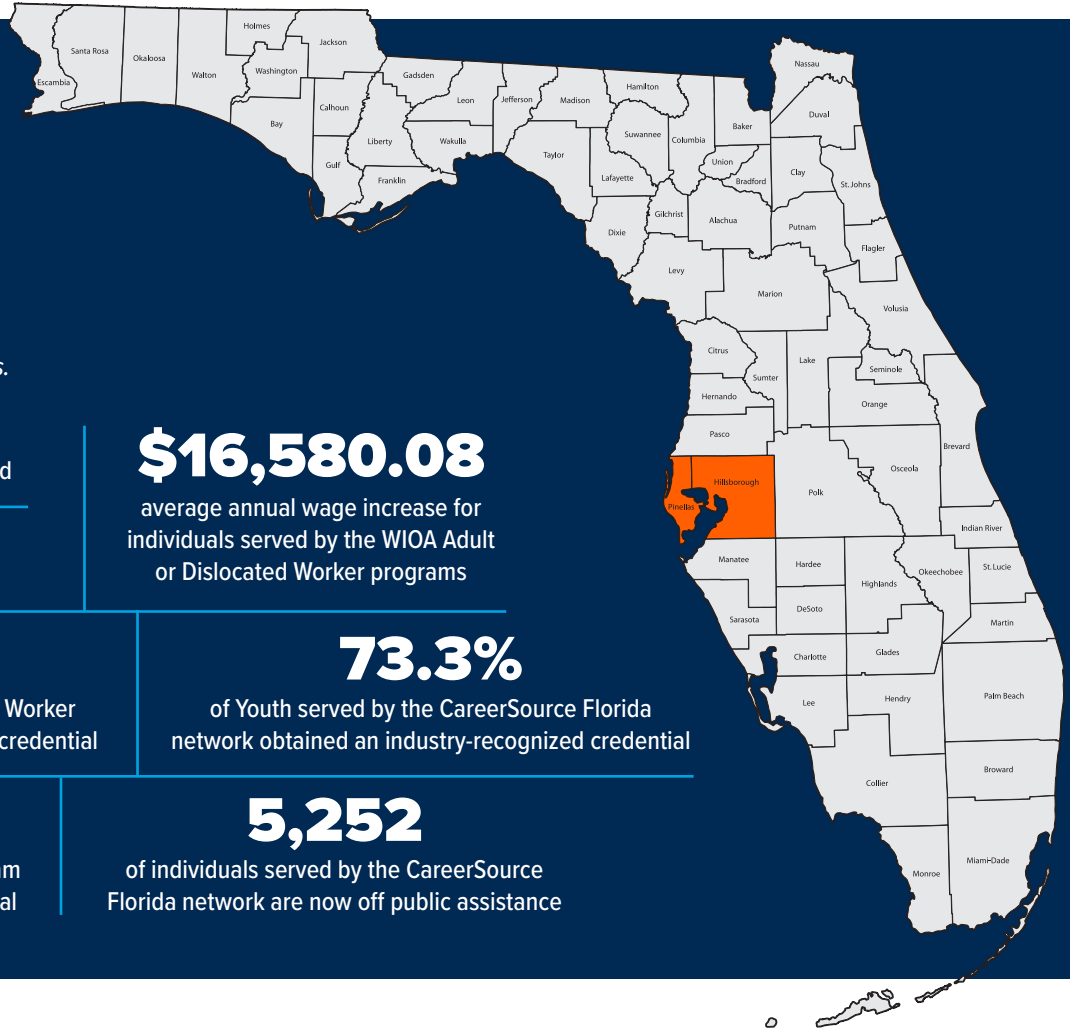
average annual wage increase for individuals served by the WIOA Adult or Dislocated Worker programs

73.3%

of Youth served by the CareerSource Florida network obtained an industry-recognized credential

5,252

of individuals served by the CareerSource Florida network are now off public assistance



TOP 30 HIGH-DEMAND CAREERS:

Regional projections through 2032.

- | | | | |
|---|--|--|--|
| 1. General and Operations Managers | 9. Software Developers | 17. Real Estate Sales Agents | 26. Medical and Health Services Managers |
| 2. Bookkeeping, Accounting, and Auditing Clerks | 10. Sales Representatives, Wholesale and Manufacturing, Except Technical and Scientific Products | 18. First-Line Supervisors of Construction Trades and Extraction Workers | 27. Elementary School Teachers, Except Special Education |
| 3. Registered Nurses | 11. Insurance Sales Agents | 19. Carpenters | 28. Securities, Commodities, and Financial Services Sales Agents |
| 4. Sales Representatives of Services, Except Advertising, Insurance, Financial Services, and Travel | 12. Market Research Analysts and Marketing Specialists | 20. Computer User Support Specialists | 29. Licensed Practical and Licensed Vocational Nurses |
| 5. Heavy and Tractor-Trailer Truck Drivers | 13. First-Line Supervisors of Retail Sales Workers | 21. Claims Adjusters, Examiners, and Investigators | 30. Property, Real Estate, and Community Association Managers |
| 6. Accountants and Auditors | 14. Business Operations Specialists, All Other | 22. Electricians | |
| 7. Management Analysts | 15. Human Resources Specialists | 23. Managers, All Other | |
| 8. First-Line Supervisors of Office and Administrative Support Workers | 16. Project Management Specialists | 24. Paralegals and Legal Assistants | |
| | | 25. Financial Managers | |

Source: The Florida Chamber Foundation



SCAN TO LEARN MORE

careersourceflorida.com

A proud partner of the AmericanJobCenter network

CareerSource Florida is an equal opportunity employer/program. Auxiliary aids and services are available upon request to individuals with disabilities. Disponible en Español.



CAREERSOURCE FLORIDA NETWORK IMPACT

All data included is from July 1, 2024 - June 30, 2025 and was provided by FloridaCommerce.

LOCAL WORKFORCE PROGRAM SUPPORT



Serving Polk county.

4,492 Employ Florida participants served

453 WIOA Adult, Dislocated Workers, and Youth served

73.3%

of adults served by the WIOA Dislocated Worker program obtained an industry-recognized credential

81%

of adults served by the WIOA Adult program obtained an industry-recognized credential

\$9,989.87

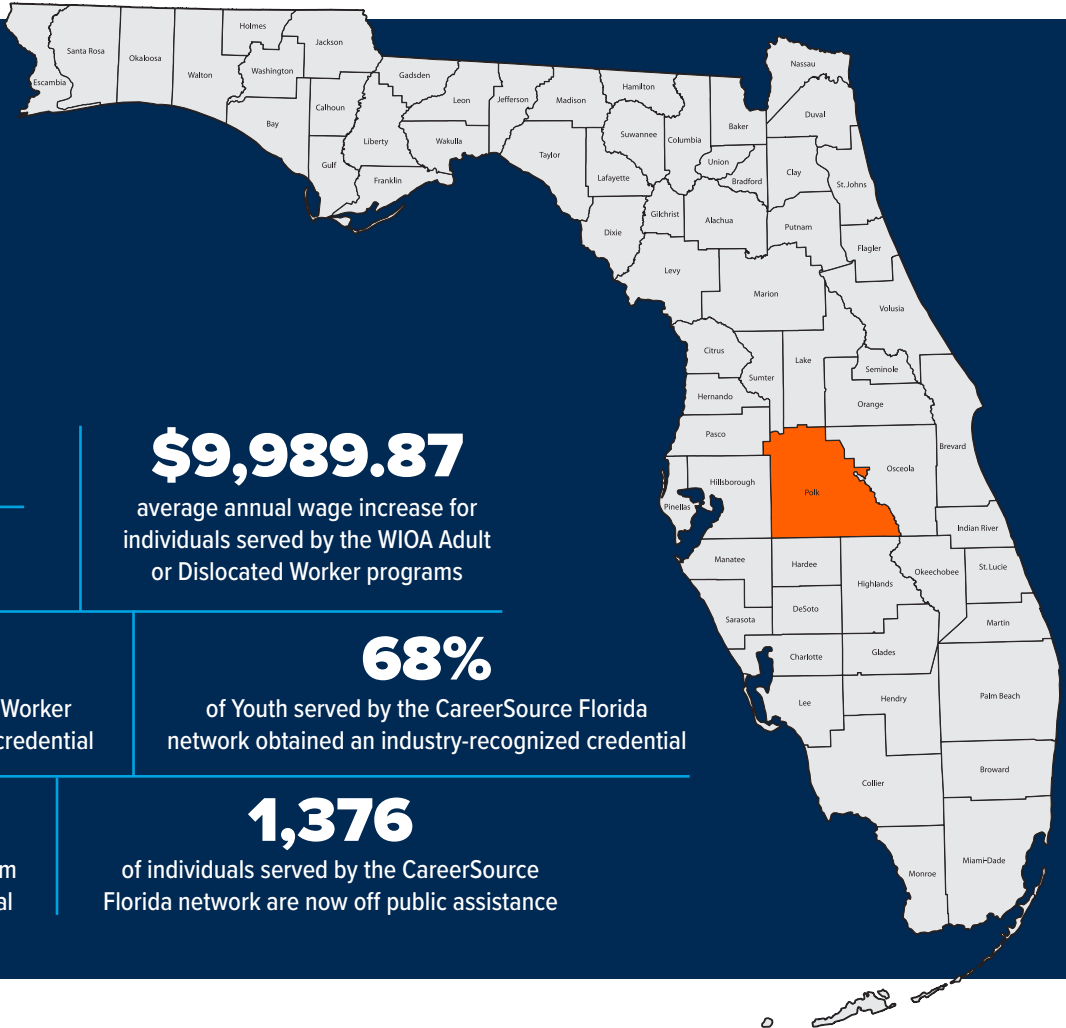
average annual wage increase for individuals served by the WIOA Adult or Dislocated Worker programs

68%

of Youth served by the CareerSource Florida network obtained an industry-recognized credential

1,376

of individuals served by the CareerSource Florida network are now off public assistance



TOP 30 HIGH-DEMAND CAREERS:

Regional projections through 2032.

- Heavy and Tractor-Trailer Truck Drivers
- General and Operations Managers
- Insurance Sales Agents
- Registered Nurses
- First-Line Supervisors of Office and Administrative Support Workers
- First-Line Supervisors of Retail Sales Workers
- Sales Representatives of Services, Except Advertising, Insurance, Financial Services, and Travel
- Elementary School Teachers, Except Special Education
- Sales Representatives, Wholesale and Manufacturing, Except Technical and Scientific Products
- Farmers, Ranchers, and Other Agricultural Managers
- Accountants and Auditors
- First-Line Supervisors of Construction Trades and Extraction Workers
- Secondary School Teachers, Except Special and Career/Technical Education
- Market Research Analysts and Marketing Specialists
- Management Analysts
- Industrial Machinery Mechanics
- First-Line Supervisors of Production and Operating Workers
- Electricians
- Business Operations Specialists, All Other
- Human Resources Specialists
- Licensed Practical and Licensed Vocational Nurses
- Real Estate Sales Agents
- Middle School Teachers, Except Special and Career/Technical Education
- Software Developers
- Construction Managers
- First-Line Supervisors of Mechanics, Installers, and Repairers
- Project Management Specialists
- Computer User Support Specialists
- Medical and Health Services Managers
- Heating, Air Conditioning, and Refrigeration Mechanics and Installers

Source: The Florida Chamber Foundation



SCAN TO LEARN MORE

careersourceflorida.com

A proud partner of the AmericanJobCenter network

CareerSource Florida is an equal opportunity employer/program. Auxiliary aids and services are available upon request to individuals with disabilities. Disponible en Español.



CAREERSOURCE FLORIDA NETWORK IMPACT

All data included is from July 1, 2024 - June 30, 2025 and was provided by FloridaCommerce.

LOCAL WORKFORCE PROGRAM SUPPORT



Serving Manatee and Sarasota counties.

1,848 Employ Florida participants served

223 WIOA Adult, Dislocated Workers, and Youth served

50%

of adults served by the WIOA Dislocated Worker program obtained an industry-recognized credential

80.5%

of adults served by the WIOA Adult program obtained an industry-recognized credential

\$15,794.94

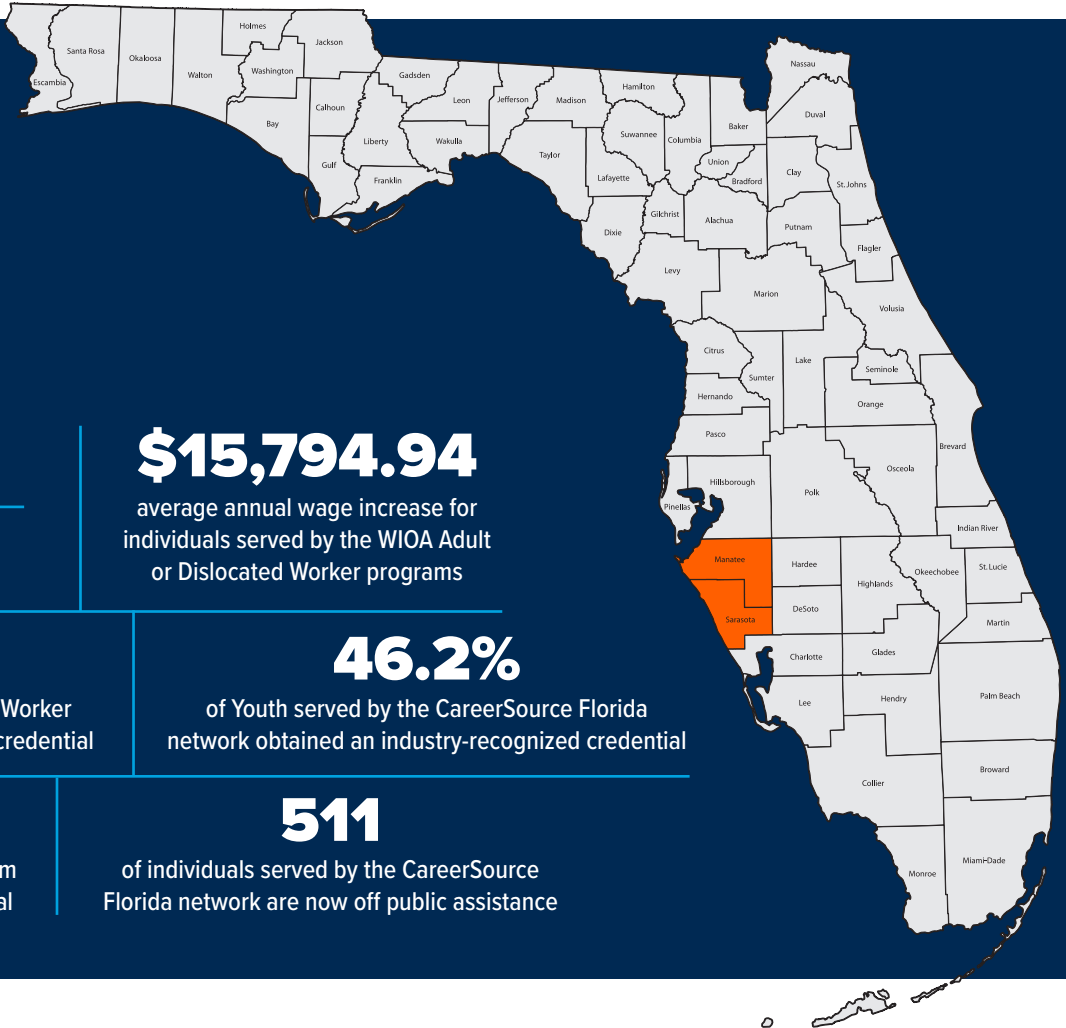
average annual wage increase for individuals served by the WIOA Adult or Dislocated Worker programs

46.2%

of Youth served by the CareerSource Florida network obtained an industry-recognized credential

511

of individuals served by the CareerSource Florida network are now off public assistance



TOP 30 HIGH-DEMAND CAREERS:

Regional projections through 2032.

- | | | | |
|---|---|---|---|
| 1. General and Operations Managers | 9. Sales Representatives, Wholesale and Manufacturing, Except Technical and Scientific Products | 17. Heating, Air Conditioning, and Refrigeration Mechanics and Installers | 25. Business Operations Specialists, All Other |
| 2. Registered Nurses | 10. Accountants and Auditors | 18. Construction Managers | 26. Human Resources Specialists |
| 3. First-Line Supervisors of Retail Sales Workers | 11. Market Research Analysts and Marketing Specialists | 19. Property, Real Estate, and Community Association Managers | 27. Food Service Managers |
| 4. Heavy and Tractor-Trailer Truck Drivers | 12. First-Line Supervisors of Construction Trades and Extraction Workers | 20. Software Developers | 28. Medical and Health Services Managers |
| 5. Real Estate Sales Agents | 13. Insurance Sales Agents | 21. Project Management Specialists | 29. Coaches and Scouts |
| 6. Carpenters | 14. Roofers | 22. Plumbers, Pipefitters, and Steamfitters | 30. First-Line Supervisors of Landscaping, Lawn Service, and Groundskeeping Workers |
| 7. Sales Representatives of Services, Except Advertising, Insurance, Financial Services, and Travel | 15. Management Analysts | 23. Elementary School Teachers, Except Special Education | |
| 8. First-Line Supervisors of Office and Administrative Support Workers | 16. Electricians | 24. Licensed Practical and Licensed Vocational Nurses | |

Source: The Florida Chamber Foundation



SCAN TO LEARN MORE

careersourceflorida.com

A proud partner of the AmericanJobCenter network

CareerSource Florida is an equal opportunity employer/program. Auxiliary aids and services are available upon request to individuals with disabilities. Disponible en Español.



CAREERSOURCE FLORIDA NETWORK IMPACT

All data included is from July 1, 2024 - June 30, 2025 and was provided by FloridaCommerce.

LOCAL WORKFORCE PROGRAM SUPPORT



Serving Hardee, DeSoto, Highlands, and Okeechobee counties.

2,409 Employ Florida participants served

232 WIOA Adult, Dislocated Workers, and Youth served

100%

of adults served by the WIOA Dislocated Worker program obtained an industry-recognized credential

87.8%

of adults served by the WIOA Adult program obtained an industry-recognized credential

\$17,826.91

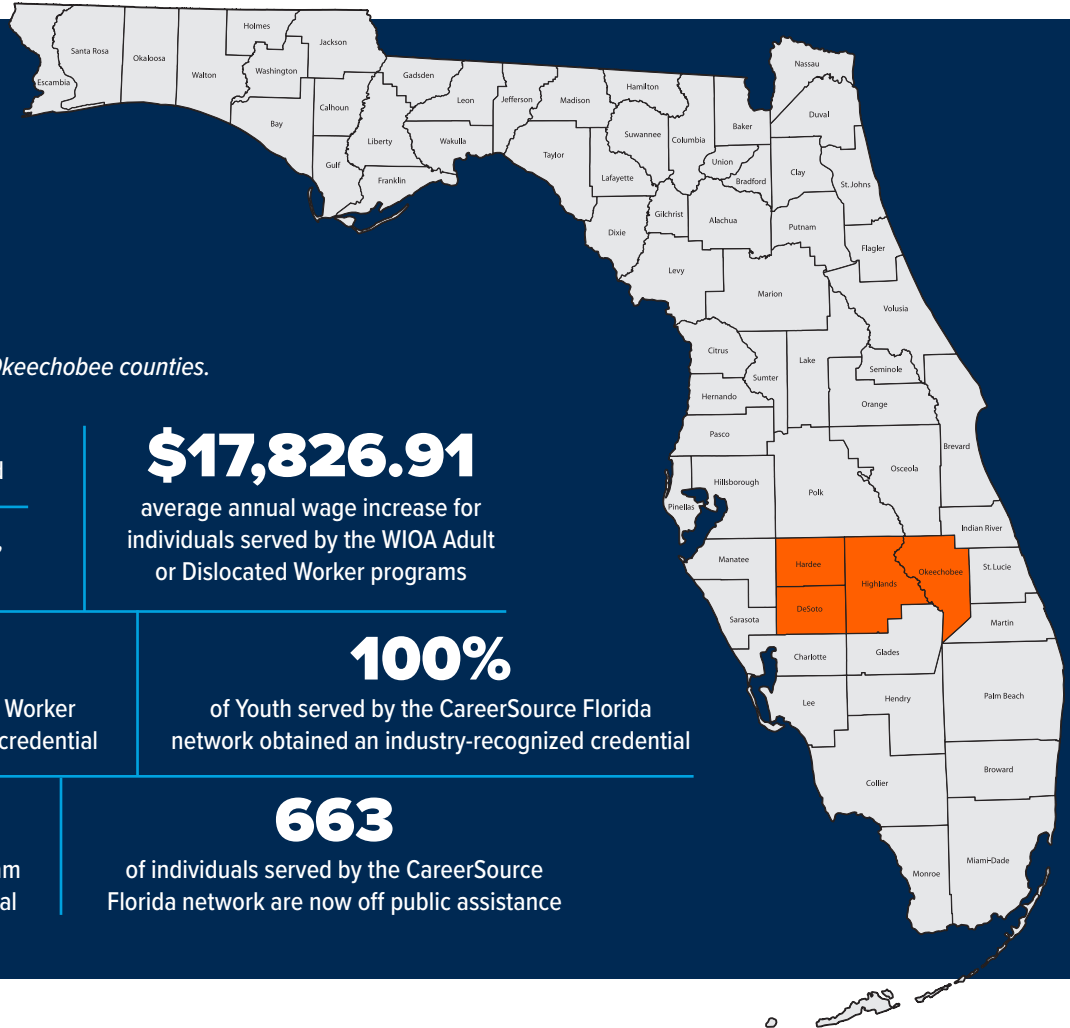
average annual wage increase for individuals served by the WIOA Adult or Dislocated Worker programs

100%

of Youth served by the CareerSource Florida network obtained an industry-recognized credential

663

of individuals served by the CareerSource Florida network are now off public assistance



TOP 30 HIGH-DEMAND CAREERS:

Regional projections through 2032.

- Heavy and Tractor-Trailer Truck Drivers
- Registered Nurses
- General and Operations Managers
- First-Line Supervisors of Retail Sales Workers
- Elementary School Teachers, Except Special Education
- Industrial Truck and Tractor Operators
- Sales Representatives of Services, Except Advertising, Insurance, Financial Services, and Travel
- Sales Representatives, Wholesale and Manufacturing, Except Technical and Scientific Products
- First-Line Supervisors of Construction Trades and Extraction Workers
- Police and Sheriff's Patrol Officers
- Licensed Practical and Licensed Vocational Nurses
- Secondary School Teachers, Except Special and Career/Technical Education
- First-Line Supervisors of Mechanics, Installers, and Repairers
- Accountants and Auditors
- Medical and Health Services Managers
- Heating, Air Conditioning, and Refrigeration Mechanics and Installers
- Insurance Sales Agents
- Teachers and Instructors, All Other
- Middle School Teachers, Except Special and Career/Technical Education
- Tutors
- Construction Managers
- Management Analysts
- Business Operations Specialists, All Other
- Market Research Analysts and Marketing Specialists
- Managers, All Other
- Clergy
- Human Resources Specialists
- Food Service Managers
- Electricians
- Physical Therapist Assistants

Source: The Florida Chamber Foundation



SCAN TO LEARN MORE

careersourceflorida.com

A proud partner of the AmericanJobCenter network

CareerSource Florida is an equal opportunity employer/program. Auxiliary aids and services are available upon request to individuals with disabilities. Disponible en Español.



CAREERSOURCE FLORIDA NETWORK IMPACT

All data included is from July 1, 2024 - June 30, 2025 and was provided by FloridaCommerce.

LOCAL WORKFORCE PROGRAM SUPPORT



Serving Indian River, St. Lucie, and Martin counties.

2,975 Employ Florida participants served

322 WIOA Adult, Dislocated Workers, and Youth served

100%

of adults served by the WIOA Dislocated Worker program obtained an industry-recognized credential

89.7%

of adults served by the WIOA Adult program obtained an industry-recognized credential

\$34,111.02

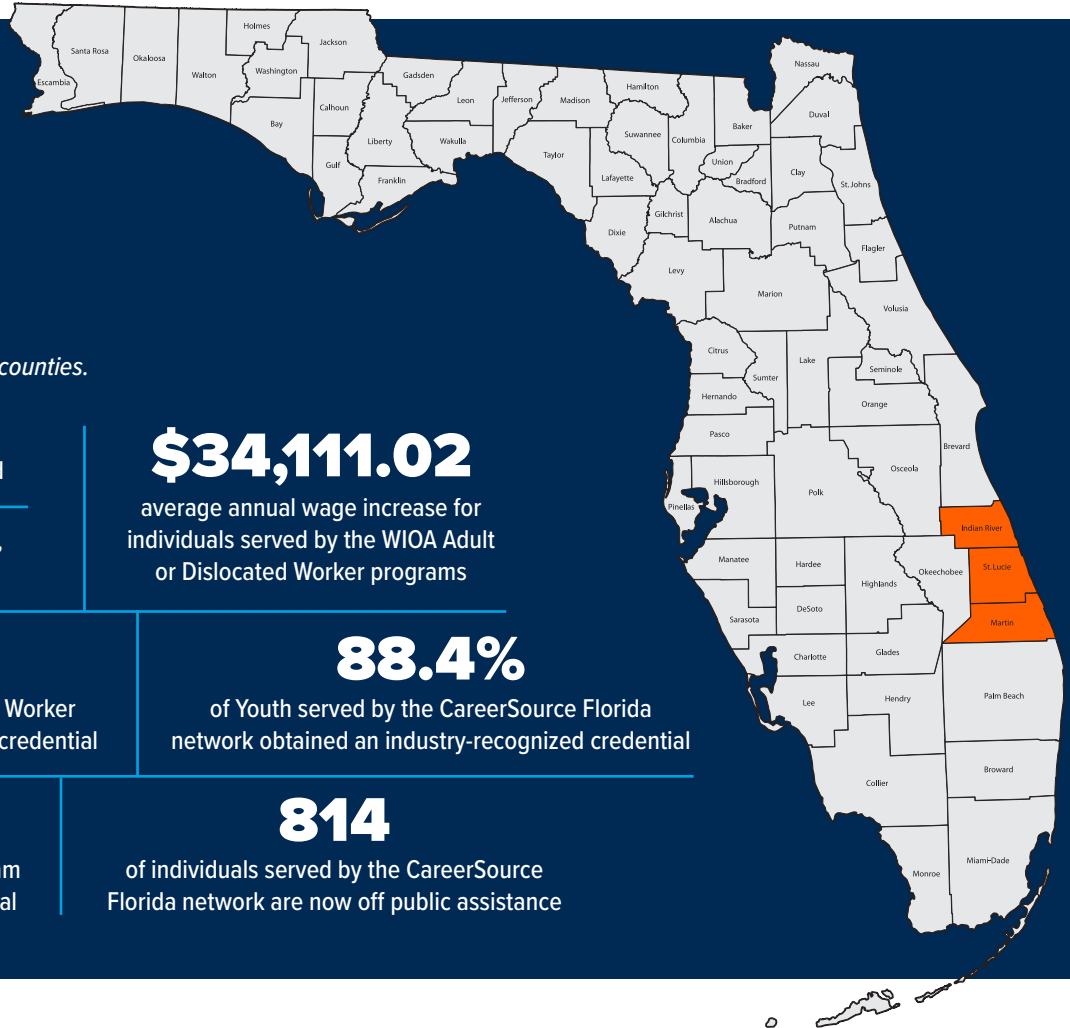
average annual wage increase for individuals served by the WIOA Adult or Dislocated Worker programs

88.4%

of Youth served by the CareerSource Florida network obtained an industry-recognized credential

814

of individuals served by the CareerSource Florida network are now off public assistance



TOP 30 HIGH-DEMAND CAREERS:

Regional projections through 2032.

- | | | | |
|---|--|--|---|
| 1. General and Operations Managers | 8. Elementary School Teachers, Except Special Education | 17. Licensed Practical and Licensed Vocational Nurses | 24. Business Operations Specialists, All Other |
| 2. Registered Nurses | 9. Accountants and Auditors | 18. Management Analysts | 25. Middle School Teachers, Except Special and Career/Technical Education |
| 3. First-Line Supervisors of Retail Sales Workers | 10. First-Line Supervisors of Construction Trades and Extraction Workers | 19. Heating, Air Conditioning, and Refrigeration Mechanics and Installers | 26. Food Service Managers |
| 4. Heavy and Tractor-Trailer Truck Drivers | 11. Electricians | 20. Plumbers, Pipefitters, and Steamfitters | 27. First-Line Supervisors of Mechanics, Installers, and Repairers |
| 5. Sales Representatives of Services, Except Advertising, Insurance, Financial Services, and Travel | 12. Real Estate Sales Agents | 21. Secondary School Teachers, Except Special and Career/Technical Education | 28. Project Management Specialists |
| 6. Automotive Service Technicians and Mechanics | 13. Farmers, Ranchers, and Other Agricultural Managers | 22. Clinical Laboratory Technologists and Technicians | 29. Construction Managers |
| 7. Sales Representatives, Wholesale and Manufacturing, Except Technical and Scientific Products | 14. Medical and Health Services Managers | 23. Insurance Sales Agents | 30. First-Line Supervisors of Production and Operating Workers |
| | 15. Human Resources Specialists | | |
| | 16. Market Research Analysts and Marketing Specialists | | |

Source: The Florida Chamber Foundation



SCAN TO LEARN MORE

careersourceflorida.com

A proud partner of the AmericanJobCenter network

CareerSource Florida is an equal opportunity employer/program. Auxiliary aids and services are available upon request to individuals with disabilities. Disponible en Español.



CAREERSOURCE FLORIDA NETWORK IMPACT

All data included is from July 1, 2024 - June 30, 2025 and was provided by FloridaCommerce.

LOCAL WORKFORCE PROGRAM SUPPORT



Serving Palm Beach county.

5,549 Employ Florida participants served

382 WIOA Adult, Dislocated Workers, and Youth served

86.1%

of adults served by the WIOA Dislocated Worker program obtained an industry-recognized credential

81.3%

of adults served by the WIOA Adult program obtained an industry-recognized credential

\$7,984.85

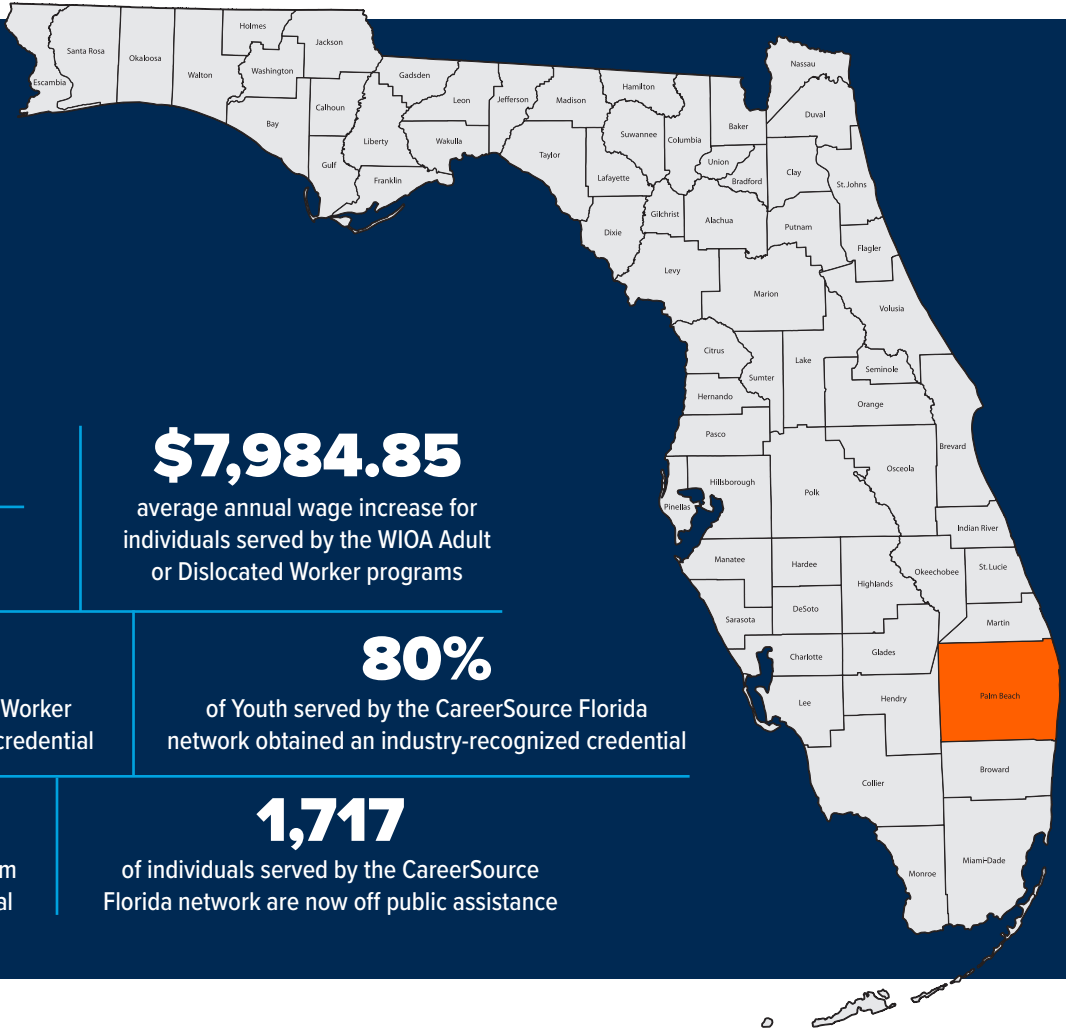
average annual wage increase for individuals served by the WIOA Adult or Dislocated Worker programs

80%

of Youth served by the CareerSource Florida network obtained an industry-recognized credential

1,717

of individuals served by the CareerSource Florida network are now off public assistance



TOP 30 HIGH-DEMAND CAREERS:

Regional projections through 2032.

- | | | | |
|---|--|---|---|
| 1. General and Operations Managers | 9. Market Research Analysts and Marketing Specialists | 17. Carpenters | 25. Dental Assistants |
| 2. Registered Nurses | 10. First-Line Supervisors of Retail Sales Workers | 18. Electricians | 26. Insurance Sales Agents |
| 3. Accountants and Auditors | 11. Software Developers | 19. Lawyers | 27. Medical and Health Services Managers |
| 4. Sales Representatives of Services, Except Advertising, Insurance, Financial Services, and Travel | 12. Management Analysts | 20. Business Operations Specialists, All Other | 28. Securities, Commodities, and Financial Services Sales Agents |
| 5. First-Line Supervisors of Office and Administrative Support Workers | 13. Human Resources Specialists | 21. Paralegals and Legal Assistants | 29. Heating, Air Conditioning, and Refrigeration Mechanics and Installers |
| 6. Real Estate Sales Agents | 14. First-Line Supervisors of Construction Trades and Extraction Workers | 22. Property, Real Estate, and Community Association Managers | 30. Police and Sheriff's Patrol Officers |
| 7. Heavy and Tractor-Trailer Truck Drivers | 15. Elementary School Teachers, Except Special Education | 23. Automotive Service Technicians and Mechanics | |
| 8. Sales Representatives, Wholesale and Manufacturing, Except Technical and Scientific Products | 16. Project Management Specialists | 24. First-Line Supervisors of Landscaping, Lawn Service, and Groundskeeping Workers | |

Source: The Florida Chamber Foundation



SCAN TO LEARN MORE

careersourceflorida.com

A proud partner of the AmericanJobCenter network

CareerSource Florida is an equal opportunity employer/program. Auxiliary aids and services are available upon request to individuals with disabilities. Disponible en Español.



CAREERSOURCE FLORIDA NETWORK IMPACT

All data included is from July 1, 2024 - June 30, 2025 and was provided by FloridaCommerce.

LOCAL WORKFORCE PROGRAM SUPPORT



Serving Broward county.

5,889 Employ Florida participants served

1,230 WIOA Adult, Dislocated Workers, and Youth served

86.7%

of adults served by the WIOA Dislocated Worker program obtained an industry-recognized credential

84.3%

of adults served by the WIOA Adult program obtained an industry-recognized credential

\$17,186.88

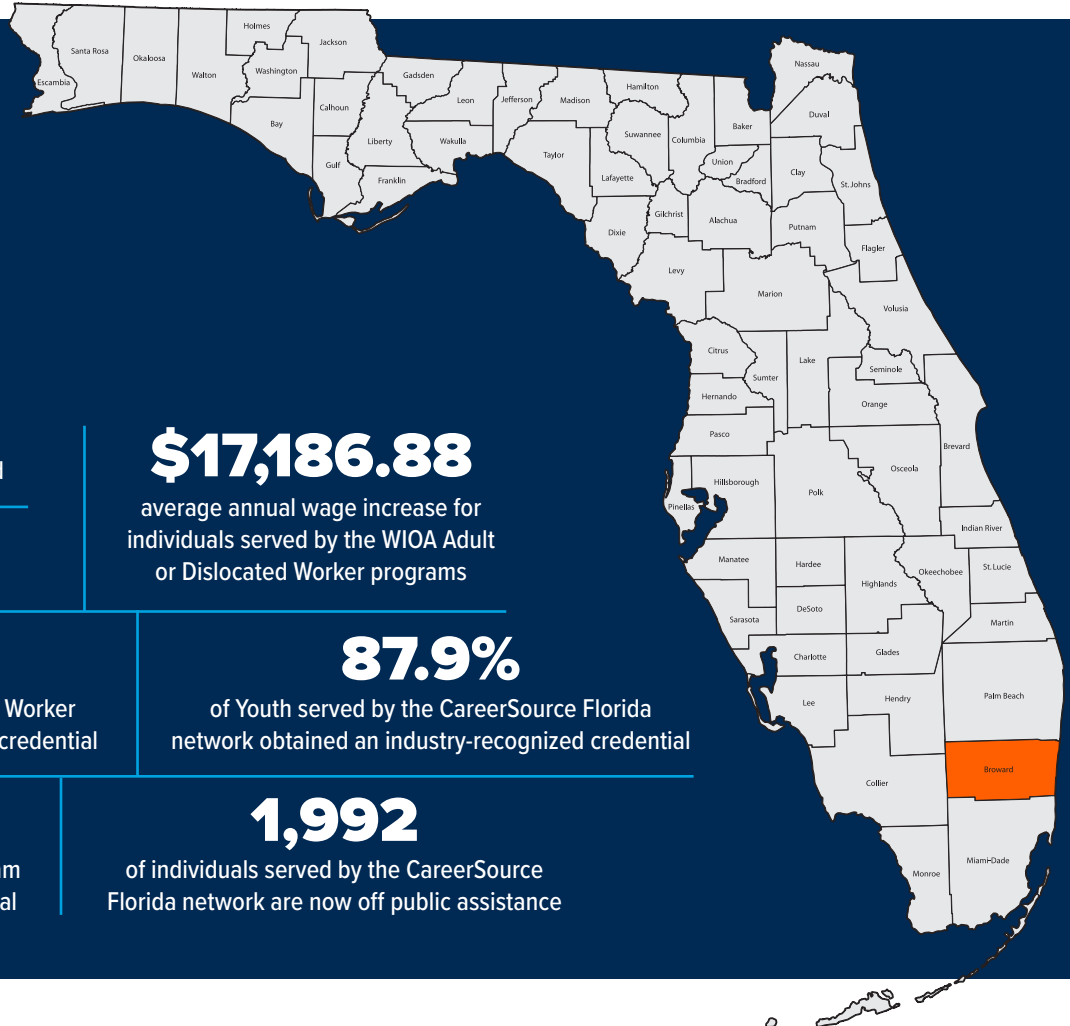
average annual wage increase for individuals served by the WIOA Adult or Dislocated Worker programs

87.9%

of Youth served by the CareerSource Florida network obtained an industry-recognized credential

1,992

of individuals served by the CareerSource Florida network are now off public assistance



TOP 30 HIGH-DEMAND CAREERS:

Regional projections through 2032.

1. General and Operations Managers
2. Registered Nurses
3. Sales Representatives of Services, Except Advertising, Insurance, Financial Services, and Travel
4. Sales Representatives, Wholesale and Manufacturing, Except Technical and Scientific Products
5. First-Line Supervisors of Office and Administrative Support Workers
6. Heavy and Tractor-Trailer Truck Drivers
7. Accountants and Auditors
8. Market Research Analysts and Marketing Specialists
9. Software Developers
10. Real Estate Sales Agents
11. First-Line Supervisors of Retail Sales Workers
12. Flight Attendants
13. Management Analysts
14. Human Resources Specialists
15. Project Management Specialists
16. Insurance Sales Agents
17. Lawyers
18. Elementary School Teachers, Except Special Education
19. Business Operations Specialists, All Other
20. Police and Sheriff's Patrol Officers
21. Automotive Service Technicians and Mechanics
22. First-Line Supervisors of Construction Trades and Extraction Workers
23. Carpenters
24. Paralegals and Legal Assistants
25. Electricians
26. First-Line Supervisors of Transportation and Material Moving Workers, Except Aircraft Cargo Handling Supervisors
27. Property, Real Estate, and Community Association Managers
28. Dental Assistants
29. Computer User Support Specialists
30. First-Line Supervisors of Non-Retail Sales Workers

Source: The Florida Chamber Foundation



SCAN TO LEARN MORE

careersourceflorida.com

A proud partner of the AmericanJobCenter network

CareerSource Florida is an equal opportunity employer/program. Auxiliary aids and services are available upon request to individuals with disabilities. Disponible en Español.



CAREERSOURCE FLORIDA NETWORK IMPACT

All data included is from July 1, 2024 - June 30, 2025 and was provided by FloridaCommerce.

LOCAL WORKFORCE PROGRAM SUPPORT



Serving Miami-Dade county.

21,585 Employ Florida participants served

2,550 WIOA Adult, Dislocated Workers, and Youth served

92.7%

of adults served by the WIOA Dislocated Worker program obtained an industry-recognized credential

82.3%

of adults served by the WIOA Adult program obtained an industry-recognized credential

\$19,464.99

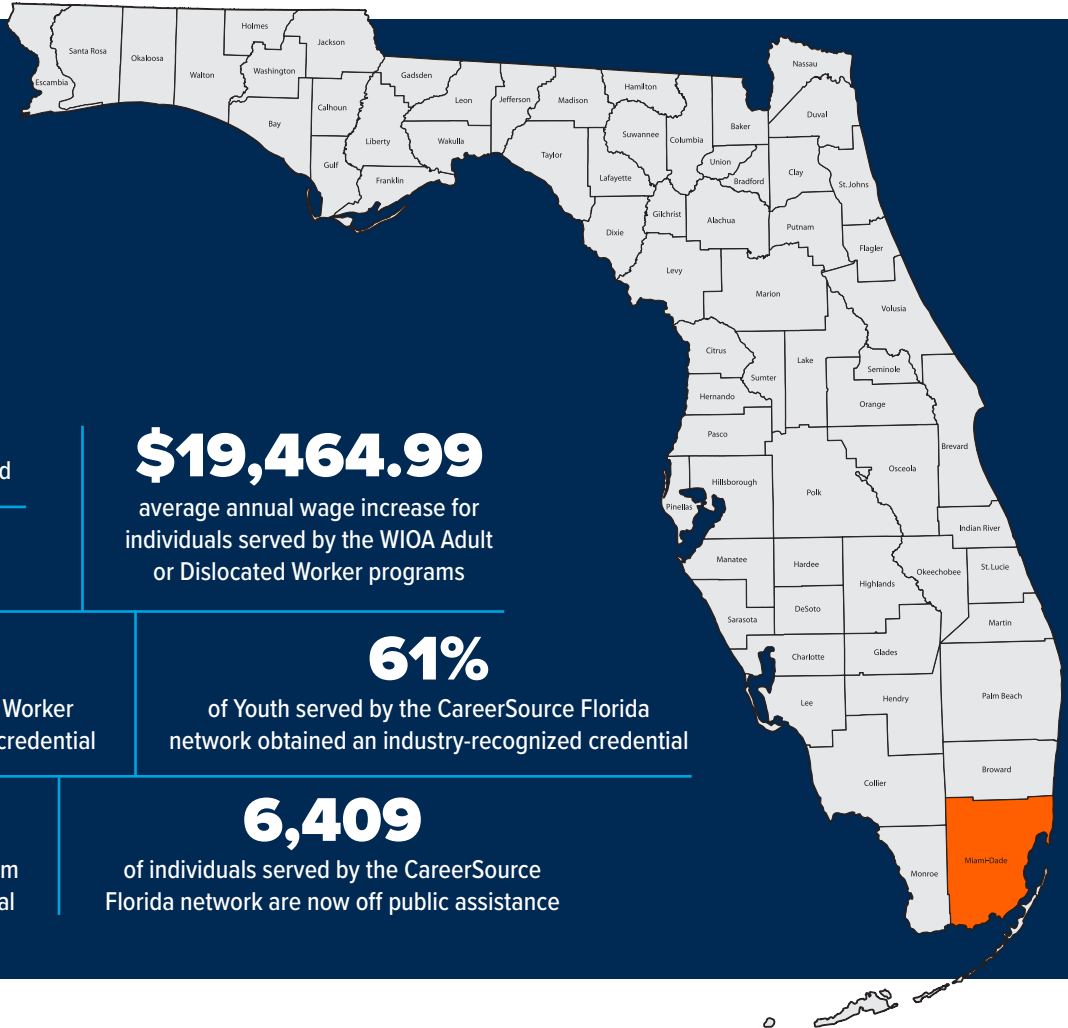
average annual wage increase for individuals served by the WIOA Adult or Dislocated Worker programs

61%

of Youth served by the CareerSource Florida network obtained an industry-recognized credential

6,409

of individuals served by the CareerSource Florida network are now off public assistance



TOP 30 HIGH-DEMAND CAREERS:

Regional projections through 2032.

- | | | | |
|---|--|--|--|
| 1. General and Operations Managers | 8. Accountants and Auditors | 18. Compliance Officers | 26. Travel Agents |
| 2. Bookkeeping, Accounting, and Auditing Clerks | 9. First-Line Supervisors of Retail Sales Workers | 19. Project Management Specialists | 27. Automotive Service Technicians and Mechanics |
| 3. Heavy and Tractor-Trailer Truck Drivers | 10. Insurance Sales Agents | 20. Human Resources Specialists | 28. First-Line Supervisors of Construction Trades and Extraction Workers |
| 4. Registered Nurses | 11. Management Analysts | 21. Software Developers | 29. Carpenters |
| 5. Sales Representatives, Wholesale and Manufacturing, Except Technical and Scientific Products | 12. Real Estate Sales Agents | 22. Flight Attendants | 30. Property, Real Estate, and Community Association Managers |
| 6. First-Line Supervisors of Office and Administrative Support Workers | 13. Market Research Analysts and Marketing Specialists | 23. First-Line Supervisors of Transportation and Material Moving Workers, Except Aircraft Cargo Handling Supervisors | |
| 7. Sales Representatives of Services, Except Advertising, Insurance, Financial Services, and Travel | 14. Paralegals and Legal Assistants | 24. Secondary School Teachers, Except Special and Career/Technical Education | |
| | 15. Business Operations Specialists, All Other | 25. Dental Assistants | |
| | 16. Police and Sheriff's Patrol Officers | | |
| | 17. Lawyers | | |

Source: The Florida Chamber Foundation



SCAN TO LEARN MORE

careersourceflorida.com

A proud partner of the American Job Center network

CareerSource Florida is an equal opportunity employer/program. Auxiliary aids and services are available upon request to individuals with disabilities. Disponible en Español.



CAREERSOURCE FLORIDA NETWORK IMPACT

All data included is from July 1, 2024 - June 30, 2025 and was provided by FloridaCommerce.

LOCAL WORKFORCE PROGRAM SUPPORT



Serving Charlotte, Glades, Lee, Hendry, Collier, and Monroe counties.

3,795 Employ Florida participants served

1,156 WIOA Adult, Dislocated Workers, and Youth served

\$17,093.72

average annual wage increase for individuals served by the WIOA Adult or Dislocated Worker programs

78.9%

of adults served by the WIOA Dislocated Worker program obtained an industry-recognized credential

59%

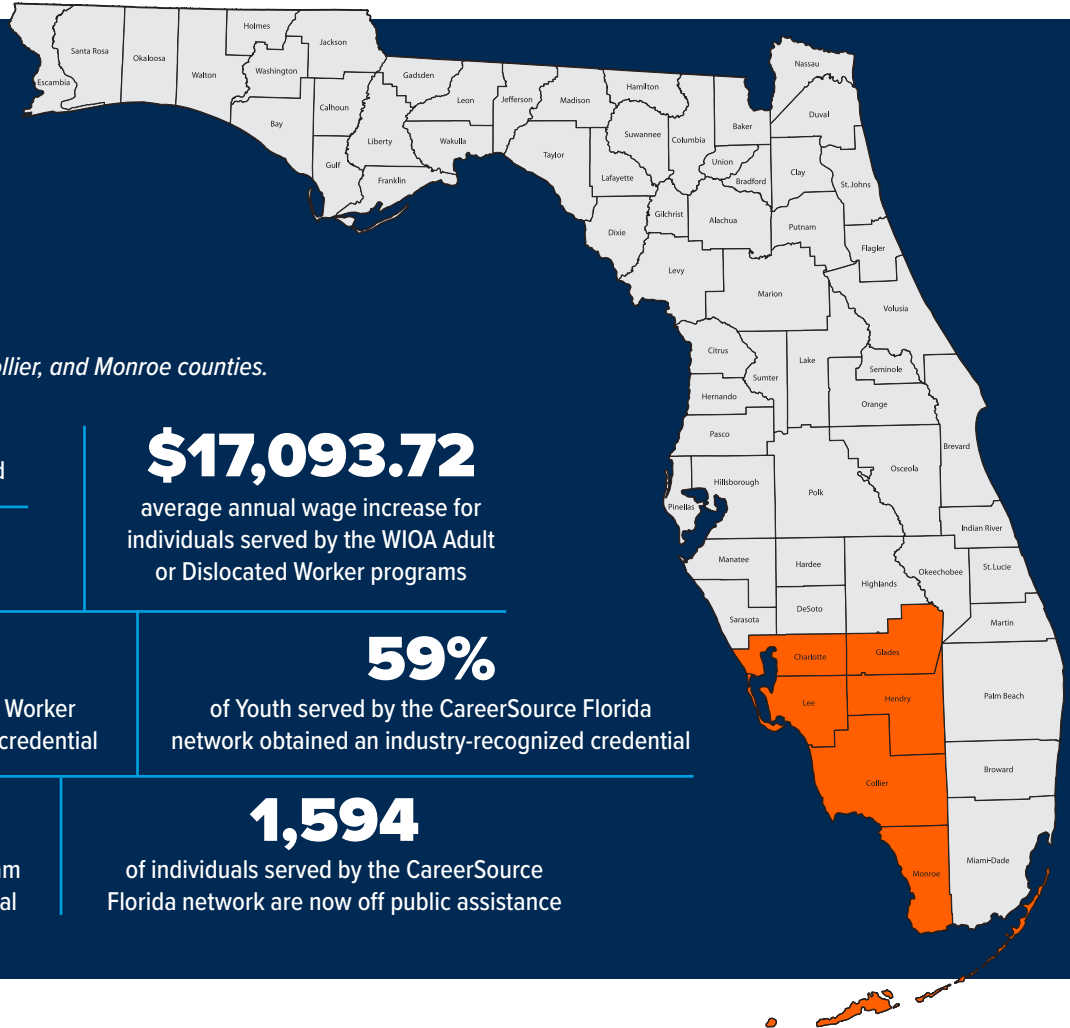
of Youth served by the CareerSource Florida network obtained an industry-recognized credential

80.3%

of adults served by the WIOA Adult program obtained an industry-recognized credential

1,594

of individuals served by the CareerSource Florida network are now off public assistance



TOP 30 HIGH-DEMAND CAREERS:

Regional projections through 2032.

- | | | | |
|---|--|---|--|
| 1. General and Operations Managers | 8. Real Estate Sales Agents | 18. Plumbers, Pipefitters, and Steamfitters | 25. Farmers, Ranchers, and Other Agricultural Managers |
| 2. Carpenters | 9. Registered Nurses | 19. Heating, Air Conditioning, and Refrigeration Mechanics and Installers | 26. Business Operations Specialists, All Other |
| 3. First-Line Supervisors of Retail Sales Workers | 10. Sales Representatives, Wholesale and Manufacturing, Except Technical and Scientific Products | 20. First-Line Supervisors of Landscaping, Lawn Service, and Groundskeeping Workers | 27. Licensed Practical and Licensed Vocational Nurses |
| 4. Heavy and Tractor-Trailer Truck Drivers | 11. Accountants and Auditors | 21. Property, Real Estate, and Community Association Managers | 28. Food Service Managers |
| 5. Sales Representatives of Services, Except Advertising, Insurance, Financial Services, and Travel | 12. Automotive Service Technicians and Mechanics | 22. Management Analysts | 29. Human Resources Specialists |
| 6. First-Line Supervisors of Construction Trades and Extraction Workers | 13. Electricians | 23. Market Research Analysts and Marketing Specialists | 30. Dental Assistants |
| 7. First-Line Supervisors of Office and Administrative Support Workers | 14. Elementary School Teachers, Except Special Education | 24. First-Line Supervisors of Mechanics, Installers, and Repairers | |
| | 15. Roofers | | |
| | 16. Project Management Specialists | | |
| | 17. Construction Managers | | |

Source: The Florida Chamber Foundation



SCAN TO LEARN MORE

careersourceflorida.com

A proud partner of the AmericanJobCenter network

CareerSource Florida is an equal opportunity employer/program. Auxiliary aids and services are available upon request to individuals with disabilities. Disponible en Español.