

# NEWS RELEASE

## BUREAU OF LABOR STATISTICS

U. S. D E P A R T M E N T O F L A B O R



Transmission of material in this news release is embargoed until  
8:30 a.m. (ET) Tuesday, December 16, 2025

USDL-25-1581

### Technical information:

Household data: (202) 691-6378 • [cpsinfo@bls.gov](mailto:cpsinfo@bls.gov) • [www.bls.gov/cps](http://www.bls.gov/cps)

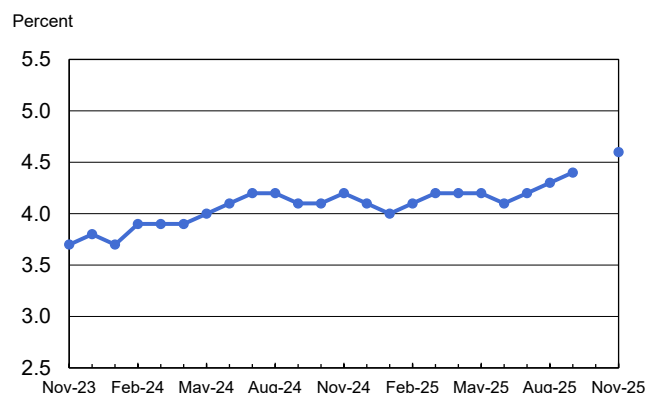
Establishment data: (202) 691-6555 • [cesinfo@bls.gov](mailto:cesinfo@bls.gov) • [www.bls.gov/ces](http://www.bls.gov/ces)

Media contact: (202) 691-5902 • [PressOffice@bls.gov](mailto:PressOffice@bls.gov)

## THE EMPLOYMENT SITUATION — NOVEMBER 2025

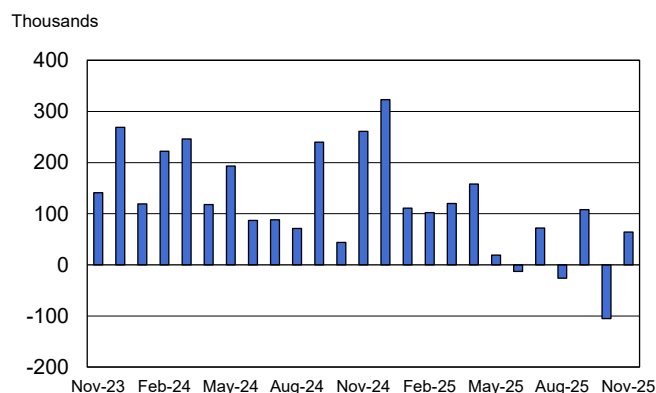
Total **nonfarm payroll employment** changed little in November (+64,000) and has shown little net change since April, the U.S. Bureau of Labor Statistics reported today. In November, the **unemployment rate**, at 4.6 percent, was little changed from September. Employment rose in health care and construction in November, while federal government continued to lose jobs.

Chart 1. Unemployment rate, seasonally adjusted,  
November 2023 – November 2025



Note: Data for October 2025 were not collected due to the federal government shutdown.

Chart 2. Nonfarm payroll employment over-the-month change,  
seasonally adjusted, November 2023 – November 2025



### Federal Government Shutdown

Publication of November 2025 data was delayed by more than a week because of a lapse in federal appropriations (from October 1 through November 12). Both the household and establishment surveys required additional data collection and processing time in November. BLS did not publish an October 2025 Employment Situation news release.

For more information, see the additional notes about the impact of the shutdown on the household survey (page 4) and the establishment survey (page 5).

This news release presents statistics from two monthly surveys. The household survey measures labor force status, including unemployment, by demographic characteristics. The establishment survey measures nonfarm employment, hours, and earnings by industry. For more information about the concepts and statistical methodology used in these two surveys, see the Technical Note.

## Household Survey Data

In November, both the **unemployment rate**, at 4.6 percent, and the number of **unemployed people**, at 7.8 million, were little changed from September. These measures are higher than last November, when the jobless rate was 4.2 percent, and the number of unemployed people was 7.1 million. (See table A-1. Household survey data for October 2025 were not collected due to the federal government shutdown. Analysis of household survey data in this news release refers to changes from September to November unless otherwise specified. For more information about the impact of the shutdown on household data, see the note on page 4.)

Among the **major worker groups**, the unemployment rate for teenagers was 16.3 percent in November, an increase from September. The jobless rates for adult men (4.1 percent), adult women (4.1 percent), Whites (3.9 percent), Blacks (8.3 percent), Asians (3.6 percent), and Hispanics (5.0 percent) showed little change. (See tables A-1, A-2, and A-3.)

The number of people **jobless less than 5 weeks** was 2.5 million in November, up by 316,000 from September. The number of **long-term unemployed** (those jobless for 27 weeks or more) changed little at 1.9 million in November and accounted for 24.3 percent of all unemployed people. (See table A-12.)

In November, both the **labor force participation rate** (62.5 percent) and the **employment-population ratio** (59.6 percent) were little changed from September. These measures showed little or no change over the year. (See table A-1.)

The number of people employed **part time for economic reasons** was 5.5 million in November, an increase of 909,000 from September. These individuals would have preferred full-time employment but were working part time because their hours had been reduced or they were unable to find full-time jobs. (See table A-8.)

The number of people **not in the labor force who currently want a job**, at 6.1 million in November, was little changed from September. These individuals were not counted as unemployed because they were not actively looking for work during the 4 weeks preceding the survey or were unavailable to take a job. (See table A-1.)

Among those not in the labor force who wanted a job, the number of people **marginally attached to the labor force**, at 1.8 million in November, was little changed from September. These individuals wanted and were available for work and had looked for a job sometime in the prior 12 months but had not looked for work in the 4 weeks preceding the survey. The number of **discouraged workers**, a subset of the marginally attached who believed that no jobs were available for them, also changed little at 651,000 in November. (See Summary table A.)

## Establishment Survey Data

Total **nonfarm payroll employment** changed little in November (+64,000) and has shown little net change since April. In November, employment rose in health care and construction. Federal government employment declined by 6,000, following a loss of 162,000 in October. (See table B-1.)

In November, **health care** added 46,000 jobs, in line with the average monthly gain of 39,000 over the prior 12 months. Over the month, job gains occurred in ambulatory health care services (+24,000), hospitals (+11,000), and nursing and residential care facilities (+11,000).

**Construction** employment grew by 28,000 in November, as nonresidential specialty trade contractors added 19,000 jobs. Construction employment had changed little over the prior 12 months.

Employment in **social assistance** continued to trend up in November (+18,000), primarily in individual and family services (+13,000).

In November, employment edged down in **transportation and warehousing** (-18,000), reflecting a job loss in couriers and messengers (-18,000). Transportation and warehousing employment has declined by 78,000 since reaching a peak in February.

**Federal government** employment continued to decrease in November (-6,000). This follows a sharp decline of 162,000 in October, as some federal employees who accepted a deferred resignation offer came off federal payrolls. Federal government employment is down by 271,000 since reaching a peak in January. (Federal employees on furlough during the government shutdown were counted as employed in the establishment survey because they received pay, even if later than usual, for the pay period that included the 12th of the month. Employees on paid leave or receiving ongoing severance pay are counted as employed in the establishment survey.)

Employment showed little change over the month in other major industries, including **mining, quarrying, and oil and gas extraction; manufacturing; wholesale trade; retail trade; information; financial activities; professional and business services; leisure and hospitality; and other services.**

In November, **average hourly earnings for all employees** on private nonfarm payrolls edged up by 5 cents, or 0.1 percent, to \$36.86. Over the past 12 months, average hourly earnings have increased by 3.5 percent. In November, average hourly earnings of private-sector **production and nonsupervisory employees** rose by 11 cents, or 0.3 percent, to \$31.76. (See tables B-3 and B-8.)

The **average workweek for all employees** on private nonfarm payrolls edged up by 0.1 hour to 34.3 hours in November. In manufacturing, the average workweek changed little at 40.0 hours, and overtime was unchanged at 2.9 hours. The average workweek for **production and nonsupervisory employees** on private nonfarm payrolls was unchanged at 33.7 hours. (See tables B-2 and B-7.)

The change in total nonfarm payroll employment for August was revised down by 22,000, from -4,000 to -26,000, and the change for September was revised down by 11,000, from +119,000 to +108,000. With these revisions, employment in August and September combined is 33,000 lower than previously reported. Due to the recent federal government shutdown, this is the first publication of October data and thus there are no revisions for October this month. (Monthly revisions result from additional reports received from businesses and government agencies since the last published estimates and from the recalculation of seasonal factors.)

**The Employment Situation for December is scheduled to be released on Friday, January 9, 2026, at 8:30 a.m. (ET).**

### **Household Survey Estimates and the Federal Government Shutdown**

There are no household survey estimates for October 2025. Household survey data were not collected for October 2025 due to the lapse in appropriations and were not collected retroactively. The November reference period was the week that contained the 12th of the month, a typical reference week. Collection of November data began a day late due to the shutdown and was extended to provide more time for contacting households around the Thanksgiving holiday. The November response rate was lower than usual at 64.0 percent.

The lack of October 2025 data required an adjustment to the statistical weighting process. In the household survey, composite estimation relies on data from the previous month as an input to developing statistical weights for the current month's data. Without October data, the composite weighting formula was adjusted by shifting previously-collected data forward 1 month.

The November 2025 estimates are associated with slightly higher than usual standard errors. This is due to multiple reasons: lower survey response, composite weighting changes, and the use of a 2-month period of analysis rather than a 1-month period. For example, the November unemployment rate required a 0.26 percentage point change to be statistically significant compared with a required change in September of 0.21 percentage point.

There were no changes to the household survey seasonal adjustment methodology.

In the household survey, people are considered employed if they did any work at all for pay or profit during the survey reference week or were temporarily absent from their jobs or businesses. The lapse in appropriations lasted from October 1 through November 12, 2025. The survey reference week was November 9 through 15. Because the government reopened before the end of the November reference week, federal government workers were counted as employed in the household survey.

It is not possible to precisely quantify the effect of the federal government shutdown on household survey estimates for November.

Additional information about the impact of the shutdown on the household survey is available online at [www.bls.gov/cps/methods/2025-federal-government-shutdown-impact-cps.htm](http://www.bls.gov/cps/methods/2025-federal-government-shutdown-impact-cps.htm).

### **Establishment Survey Estimates and the Federal Government Shutdown**

This news release includes the initial establishment survey estimates for both October and November; therefore, there are no revisions to report for October estimates. The collection periods for October and November estimates were extended. Due to the extended data collection period, October data are available at a detailed industry level that typically is only available with the second publication of data.

October estimates include data that businesses self-reported electronically during the shutdown and data collected after the resumption of government operations in November. The collection rates for October (73.9 percent) and November (73.8 percent) are higher than usual as a result of the extended collection periods.

There was no change to the reference period for October or November; it remained the pay period that includes the 12th of the month. There were no changes to seasonal adjustment or estimation methodology.

The August and September data are final estimates and incorporate routine revisions.

In the establishment survey, businesses and government agencies report the number of people on payrolls during the pay period that includes the 12th of the month. Individuals who work or receive pay for any part of the pay period are defined as employed. Federal employees on furlough during the federal government shutdown were considered employed in the establishment survey because they worked or received pay, even if later than usual, for the pay period that included the 12th of the month. Other workers (including federal contractors) who did not work or receive pay during the federal government shutdown were not counted among the employed.

It is not possible to precisely quantify the total impact of the federal government shutdown on payroll employment estimates for October and November.

### **Revision of Seasonally Adjusted Household Survey Data**

In accordance with usual practice, The Employment Situation news release for December 2025, scheduled for January 9, 2026, will incorporate annual revisions in seasonally adjusted household survey data. Seasonally adjusted data for the most recent 5 years are subject to revision.

### **Population Control Adjustments to the Household Survey**

The annual population control adjustments that are usually incorporated with the release of January estimates in February will be delayed. When additional information is available, it will be announced at [www.bls.gov/cps/documentation.htm#pop](http://www.bls.gov/cps/documentation.htm#pop).

### **Upcoming Changes to the Establishment Survey Birth-Death Model**

Effective with the release of January 2026 data, the establishment survey will change the birth-death model by incorporating current sample information each month. The change follows the same methodology applied to the April through October 2024 forecasts during the 2024 post-benchmark period (see question 9 in the CES Birth-Death Model Frequently Asked Questions page at [www.bls.gov/web/empsit/cesbdqa.htm](http://www.bls.gov/web/empsit/cesbdqa.htm)).

# HOUSEHOLD DATA

## Summary table A. Household data, seasonally adjusted

[Numbers in thousands]

Category	Nov. 2024	Sept. 2025	Oct. 2025	Nov. 2025	Change from: Oct. 2025- Nov. 2025
<b>Employment status</b>					
Civilian noninstitutional population.....	269,463	274,226	—	274,633	—
Civilian labor force.....	168,304	171,248	—	171,571	—
Participation rate.....	62.5	62.4	—	62.5	—
Employed.....	161,183	163,645	—	163,741	—
Employment-population ratio.....	59.8	59.7	—	59.6	—
Unemployed.....	7,121	7,603	—	7,831	—
Unemployment rate.....	4.2	4.4	—	4.6	—
Not in labor force.....	101,159	102,978	—	103,061	—
<b>Unemployment rates</b>					
Total, 16 years and over.....	4.2	4.4	—	4.6	—
Adult men (20 years and over).....	3.9	4.0	—	4.1	—
Adult women (20 years and over).....	3.9	4.2	—	4.1	—
Teenagers (16 to 19 years).....	13.1	13.2	—	16.3	—
White.....	3.8	3.8	—	3.9	—
Black or African American.....	6.4	7.5	—	8.3	—
Asian.....	3.8	4.4	—	3.6	—
Hispanic or Latino ethnicity.....	5.3	5.5	—	5.0	—
Total, 25 years and over.....	3.5	3.5	—	3.7	—
Less than a high school diploma.....	6.0	6.8	—	6.8	—
High school graduates, no college.....	4.6	4.2	—	4.4	—
Some college or associate degree.....	3.6	3.4	—	3.5	—
Bachelor's degree and higher.....	2.5	2.8	—	2.9	—
<b>Reason for unemployment</b>					
Job losers and people who completed temporary jobs.....	3,394	3,525	—	3,559	—
Job leavers.....	854	861	—	862	—
Reentrants.....	2,182	2,325	—	2,618	—
New entrants.....	690	813	—	765	—
<b>Duration of unemployment</b>					
Less than 5 weeks.....	2,208	2,227	—	2,543	—
5 to 14 weeks.....	2,063	2,367	—	2,202	—
15 to 26 weeks.....	1,236	1,290	—	1,189	—
27 weeks and over.....	1,654	1,814	—	1,910	—
<b>Employed people at work part time</b>					
Part time for economic reasons.....	4,469	4,579	—	5,488	—
Slack work or business conditions.....	3,125	3,123	—	3,444	—
Could only find part-time work.....	1,084	1,170	—	1,759	—
Part time for noneconomic reasons.....	22,380	22,756	—	23,126	—
<b>People not in the labor force</b>					
Marginally attached to the labor force.....	1,572	1,742	—	1,825	—
Discouraged workers.....	401	557	—	651	—

NOTE: People whose ethnicity is identified as Hispanic or Latino may be of any race. Detail for the seasonally adjusted data shown in this table will not necessarily add to totals because of the independent seasonal adjustment of the various series. Updated population controls are introduced annually with the release of January data. Data for October 2025 were not collected due to the federal government shutdown.

**ESTABLISHMENT DATA**  
**Summary table B. Establishment data, seasonally adjusted**

Category	Nov. 2024	Sept. 2025	Oct. 2025 <sup>p</sup>	Nov. 2025 <sup>p</sup>
<b>EMPLOYMENT BY SELECTED INDUSTRY</b> (Over-the-month change, in thousands)				
Total nonfarm.....	261	108	-105	64
Total private.....	244	104	52	69
Goods-producing.....	28	17	-9	19
Mining and logging.....	2	-3	1	-4
Construction.....	6	25	-1	28
Manufacturing.....	20	-5	-9	-5
Durable goods <sup>1</sup> .....	27	-5	-7	-4
Motor vehicles and parts.....	-0.9	-4.1	-2.0	-4.9
Nondurable goods.....	-7	0	-2	-1
Private service-providing.....	216	87	61	50
Wholesale trade.....	5.1	8.9	2.3	-2.2
Retail trade.....	-13.5	23.4	-2.4	6.2
Transportation and warehousing.....	27.7	-33.4	-0.5	-17.7
Utilities.....	-0.3	-0.2	0.3	1.0
Information.....	5	-3	-5	-4
Financial activities.....	16	6	-3	-2
Professional and business services <sup>1</sup> .....	37	-8	-7	12
Temporary help services.....	30.0	-6.2	-12.7	-5.0
Private education and health services <sup>1</sup> .....	73	56	59	65
Health care and social assistance.....	78.9	59.1	64.6	64.0
Leisure and hospitality.....	54	42	16	-12
Other services.....	12	-5	2	3
Government.....	17	4	-157	-5
<b>(3-month average change, in thousands)</b>				
Total nonfarm.....	182	51	-8	22
Total private.....	150	57	55	75
<b>WOMEN AND PRODUCTION AND NONSUPERVISORY EMPLOYEES</b> AS A PERCENT OF ALL EMPLOYEES <sup>2</sup>				
Total nonfarm women employees.....	49.9	49.9	49.9	49.9
Total private women employees.....	48.4	48.4	48.4	48.4
Total private production and nonsupervisory employees.....	81.4	81.5	81.5	81.6
<b>HOURS AND EARNINGS</b> <b>ALL EMPLOYEES</b>				
<b>Total private</b>				
Average weekly hours.....	34.3	34.2	34.2	34.3
Average hourly earnings.....	\$35.61	\$36.65	\$36.81	\$36.86
Average weekly earnings.....	\$1,221.42	\$1,253.43	\$1,258.90	\$1,264.30
Index of aggregate weekly hours (2007=100) <sup>3</sup> .....	116.3	116.8	116.8	117.2
Over-the-month percent change.....	0.2	0.1	0.0	0.3
Index of aggregate weekly payrolls (2007=100) <sup>4</sup> .....	198.0	204.6	205.6	206.6
Over-the-month percent change.....	0.5	0.2	0.5	0.5
<b>DIFFUSION INDEX</b> (Over 1-month span) <sup>5</sup>				
Total private (250 industries).....	58.6	54.6	51.2	56.8
Manufacturing (72 industries).....	47.9	50.0	43.8	46.5

<sup>1</sup> Includes other industries, not shown separately.

<sup>2</sup> Data relate to production employees in mining and logging and manufacturing, construction employees in construction, and nonsupervisory employees in the service-providing industries.

<sup>3</sup> The indexes of aggregate weekly hours are calculated by dividing the current month's estimates of aggregate hours by the corresponding annual average aggregate hours.

<sup>4</sup> The indexes of aggregate weekly payrolls are calculated by dividing the current month's estimates of aggregate weekly payrolls by the corresponding annual average aggregate weekly payrolls.

<sup>5</sup> Figures are the percent of industries with employment increasing plus one-half of the industries with unchanged employment, where 50 percent indicates an equal balance between industries with increasing and decreasing employment.

p Preliminary

NOTE: Data have been revised to reflect March 2024 benchmark levels and updated seasonal adjustment factors.



# **Frequently Asked Questions about Employment and Unemployment Estimates**

## **1. Why are there two monthly measures of employment?**

The household survey and establishment survey both produce sample-based estimates of employment, and both have strengths and limitations. The establishment survey employment series has a smaller margin of error on the measurement of month-to-month change than the household survey because of its much larger sample size. An over-the-month employment change of about 136,000 is statistically significant in the establishment survey, while the threshold for a statistically significant change in the household survey is about 600,000. However, the household survey has a more expansive scope than the establishment survey because it includes self-employed workers whose businesses are unincorporated, unpaid family workers, agricultural workers, and private household workers, who are excluded by the establishment survey. The household survey also provides estimates of employment for demographic groups. For more information on the differences between the two surveys, please visit [www.bls.gov/web/empst/ces\\_cps\\_trends.htm](http://www.bls.gov/web/empst/ces_cps_trends.htm).

## **2. Are undocumented immigrants counted in the surveys?**

It is likely that both surveys include at least some undocumented immigrants. However, neither the establishment nor the household survey is designed to identify the legal status of workers. Therefore, it is not possible to determine how many are counted in either survey. The establishment survey does not collect data on the legal status of workers. The household survey does include questions which identify the foreign and native born, but it does not include questions about the legal status of the foreign born. Data on the foreign and native born are published each month in table A-7 of The Employment Situation news release.

## **3. Why does the establishment survey have revisions?**

The establishment survey revises published estimates to improve its data series by incorporating additional information that was not available at the time of the initial publication of the estimates. The establishment survey revises its initial monthly estimates twice, in the immediately succeeding 2 months, to incorporate additional sample receipts from respondents in the survey and recalculated seasonal adjustment factors. For more information on the monthly revisions, please visit [www.bls.gov/web/empst/cestn.htm#Revisions-Between-Preliminary-and-Final-Data](http://www.bls.gov/web/empst/cestn.htm#Revisions-Between-Preliminary-and-Final-Data).

On an annual basis, the establishment survey incorporates a benchmark revision that re-anchors estimates to nearly complete employment counts available from unemployment insurance tax records. The benchmark helps to control for sampling and modeling errors in the estimates. For more information on the annual benchmark revision, please visit [www.bls.gov/web/empst/cesbmart.htm](http://www.bls.gov/web/empst/cesbmart.htm).

## **4. Does the establishment survey sample include small firms?**

Yes. About 45 percent of the establishment survey sample is comprised of business establishments with fewer than 20 employees. The establishment survey sample is designed to maximize the reliability of the statewide total nonfarm employment estimate; firms from all states, size classes, and industries are appropriately sampled to achieve that goal.

## **5. Does the establishment survey account for employment from new businesses?**

Yes. Monthly establishment survey estimates include an adjustment to account for the net employment change generated by business births and deaths. The adjustment comes from an econometric model that forecasts the monthly net jobs impact of business births and deaths based on the actual past values of the net impact that can be observed with a lag from the Quarterly Census of Employment and Wages. The establishment survey uses modeling rather than sampling for this purpose because the survey is not immediately able to bring new businesses into the sample. There is an unavoidable lag between the birth of a new firm and its appearance on the sampling frame and availability for selection. BLS adds new businesses to the survey twice a year.

## **6. Is the count of unemployed people limited to just those receiving unemployment insurance benefits?**

No. The estimate of unemployment is based on a monthly sample survey of households. All people who are without jobs and are actively seeking and available to work are included among the unemployed. (People on temporary layoff are included even if they do not actively seek work.) There is no requirement or question relating to unemployment insurance benefits in the monthly survey.

## **7. Does the official unemployment rate exclude people who want a job but are not currently looking for work?**

Yes. However, there are separate estimates of people outside the labor force who want a job, including those who are not currently looking because they believe no jobs are available (discouraged workers). In addition, alternative measures of labor underutilization (some of which include discouraged workers and other groups not officially counted as unemployed) are published each month in table A-15 of The Employment Situation news release. For more information about these alternative measures, please visit [www.bls.gov/cps/lfcharacteristics.htm#altmeasures](http://www.bls.gov/cps/lfcharacteristics.htm#altmeasures).

## **8. How can unusually severe weather affect employment and hours estimates?**

In the establishment survey, the reference period is the pay period that includes the 12th of the month. Unusually severe weather is more likely to have an impact on average weekly hours than on employment. Average weekly hours are estimated for paid time during the pay period, including pay for holidays, sick leave, or other time off. The impact of severe weather on hours estimates typically, but not always, results in a reduction in average weekly hours. For example, some employees may be off work for part of the pay period and not receive pay for the time missed, while some workers, such as those dealing with cleanup or repair, may work extra hours.

It is not possible to precisely quantify the effect of extreme weather on payroll employment estimates. In order for severe weather conditions to reduce employment estimates, employees have to be off work without pay for the entire pay period. Employees who receive pay for any part of the pay period, even 1 hour, are counted in the payroll employment figures. For more information on how often employees are paid, please visit [www.bls.gov/ces/publications/length-pay-period.htm](http://www.bls.gov/ces/publications/length-pay-period.htm).

In the household survey, the reference period is generally the calendar week that includes the 12th of the month. People who miss the entire week's work for weather-related events are counted as employed whether or not they are paid for the time off. The household survey collects data on the number of people who had a job but were not at work due to bad weather. It also provides a measure of the number of people who usually work full time but had reduced hours due to bad weather.

Current and historical data are available on the household survey's most requested statistics page, please visit [data.bls.gov/toppicks?survey=ln](http://data.bls.gov/toppicks?survey=ln).

# Technical Note

This news release presents statistics from two major surveys, the Current Population Survey (CPS; household survey) and the Current Employment Statistics survey (CES; establishment survey). The household survey provides information on the labor force, employment, and unemployment that appears in the "A" tables, marked HOUSEHOLD DATA. It is a sample survey of about 60,000 eligible households conducted by the U.S. Census Bureau for the U.S. Bureau of Labor Statistics (BLS).

The establishment survey provides information on employment, hours, and earnings of employees on nonfarm payrolls; the data appear in the "B" tables, marked ESTABLISHMENT DATA. BLS collects these data each month from the payroll records of a sample of nonagricultural business establishments. Each month the CES program surveys about 121,000 businesses and government agencies, representing approximately 631,000 individual worksites, in order to provide detailed industry data on employment, hours, and earnings of workers on nonfarm payrolls. The active sample includes approximately one-third of all nonfarm payroll jobs.

For both surveys, the data for a given month relate to a particular week or pay period. In the household survey, the reference period is generally the calendar week that contains the 12th day of the month. In the establishment survey, the reference period is the pay period including the 12th, which may or may not correspond directly to the calendar week.

## Coverage, definitions, and differences between surveys

**Household survey.** The sample is selected to reflect the entire civilian noninstitutional population. Based on responses to a series of questions on work and job search activities, each person 16 years and over in a sample household is classified as employed, unemployed, or not in the labor force.

People are classified as *employed* if they did any work at all as paid employees during the reference week; worked in their own business, profession, or on their own farm; or worked without pay at least 15 hours in a family business or farm. People are also counted as employed if they were temporarily absent from their jobs because of illness, bad weather, vacation, labor-management disputes, or personal reasons.

People are classified as *unemployed* if they meet all of the following criteria: they had no employment during the reference week; they were available for work at that time; and they made specific active efforts to find employment sometime during the 4-week period ending with the reference week. People laid off from a job and expecting recall need not be looking for work to be counted as unemployed. The unemployment data derived from the household survey in no way depend upon the eligibility for or receipt of unemployment insurance benefits.

The *civilian labor force* is the sum of the employed and unemployed. Those people not classified as employed or unemployed are *not in the labor force*. The

*unemployment rate* is the number unemployed as a percent of the labor force. The *labor force participation rate* is the labor force as a percent of the population, and the *employment-population ratio* is the employed as a percent of the population. Additional information about the household survey can be found at [www.bls.gov/cps/documentation.htm](http://www.bls.gov/cps/documentation.htm).

**Establishment survey.** The sample establishments are drawn from private nonfarm businesses such as factories, offices, and stores, as well as from federal, state, and local government entities. *Employees on nonfarm payrolls* are those who worked or received pay for any part of the reference pay period, including people on paid leave. People are counted in each job they hold. *Hours and earnings* data are produced for the private sector for all employees and for production and nonsupervisory employees. *Production and nonsupervisory* employees are defined as production and related employees in manufacturing and mining and logging, construction workers in construction, and non-supervisory employees in private service-providing industries.

Industries are classified on the basis of an establishment's principal activity in accordance with the 2022 version of the North American Industry Classification System. Additional information about the establishment survey can be found at [www.bls.gov/ces/](http://www.bls.gov/ces/).

**Differences in employment estimates.** The numerous conceptual and methodological differences between the household and establishment surveys result in important distinctions in the employment estimates derived from the surveys. Among these are:

- The household survey includes agricultural workers, self-employed workers whose businesses are unincorporated, unpaid family workers, and private household workers among the employed. These groups are excluded from the establishment survey.
- The household survey includes people on unpaid leave among the employed. The establishment survey does not.
- The household survey is limited to workers 16 years of age and older. The establishment survey is not limited by age.
- The household survey has no duplication of individuals, because individuals are counted only once, even if they hold more than one job. In the establishment survey, employees working at more than one job and thus appearing on more than one payroll are counted separately for each appearance.

## Seasonal adjustment

Over the course of a year, the size of the nation's labor force and the levels of employment and unemployment undergo regularly occurring fluctuations. These events may result from seasonal changes in weather, major holidays, and the opening and closing of schools. The effect of such seasonal variation can be very large.

Because these seasonal events follow a more or less regular pattern each year, their influence on the level of a series can be tempered by adjusting for regular seasonal variation. These adjustments make nonseasonal developments, such as declines in employment or increases in the participation of women in the labor force, easier to spot. For example, in the household survey, the large number of youth entering the labor force each June is likely to obscure any other changes that have taken place relative to May, making it difficult to determine if the level of economic activity has risen or declined. Similarly, in the establishment survey, payroll employment in education declines by about 20 percent at the end of the spring term and later rises with the start of the fall term, obscuring the underlying employment trends in the industry. Because seasonal employment changes at the end and beginning of the school year can be estimated, the statistics can be adjusted to make underlying employment patterns more discernable. The seasonally adjusted figures provide a more useful tool with which to analyze changes in month-to-month economic activity.

Many seasonally adjusted series are independently adjusted in both the household and establishment surveys. However, the adjusted series for many major estimates, such as total payroll employment, employment in most major sectors, total employment, and unemployment are computed by aggregating independently adjusted component series. For example, total unemployment is derived by summing the adjusted series for four major age-sex components; this differs from the unemployment estimate that would be obtained by directly adjusting the total or by combining the duration, reasons, or more detailed age categories. Percentage distributions of unemployment by reason and duration are derived from the sum of the independently seasonally adjusted component series and will not necessarily match calculations made using the seasonally adjusted total unemployment level. Additional information about seasonal adjustment in the household survey can be found at [www.bls.gov/cps/documentation.htm#sa](http://www.bls.gov/cps/documentation.htm#sa).

For both the household and establishment surveys, a concurrent seasonal adjustment methodology is used in which new seasonal factors are calculated each month using all relevant data, up to and including the data for the current month. In the household survey, new seasonal factors are used to adjust only the current month's data. In the establishment survey, however, new seasonal factors are used each month to adjust the three most recent monthly estimates. The prior 2 months are routinely revised to incorporate additional sample reports and recalculated seasonal adjustment factors. In both surveys, 5-year revisions to historical data are made once a year.

## Reliability of the estimates

Statistics based on the household and establishment surveys are subject to both sampling and nonsampling error. When a sample, rather than the entire population, is surveyed, there is a chance that the sample estimates may differ from the true population values they represent. The component of this difference that occurs because samples differ by chance is known as *sampling error*, and its variability is measured by the standard error of the estimate. There is about a 90-percent chance, or level of confidence, that an estimate based on a sample will differ by no more than 1.6 standard errors from the true population value because of sampling error. BLS analyses are generally conducted at the 90-percent level of confidence.

For example, the confidence interval for the monthly change in total nonfarm employment from the establishment survey is on the order of plus or minus 136,000. Suppose the estimate of nonfarm employment increases by 50,000 from one month to the next. The 90-percent confidence interval on the monthly change would range from -86,000 to +186,000 (50,000 +/- 136,000). These figures do not mean that the sample results are off by these magnitudes, but rather that there is about a 90-percent chance that the true over-the-month change lies within this interval. Since this range includes values of less than zero, we could not say with confidence that nonfarm employment had, in fact, increased that month. If, however, the reported nonfarm employment rise was 250,000, then all of the values within the 90-percent confidence interval would be greater than zero. In this case, it is likely (at least a 90-percent chance) that nonfarm employment had, in fact, risen that month. At an unemployment rate of around 6.0 percent, the 90-percent confidence interval for the monthly change in unemployment as measured by the household survey is about +/- 300,000, and for the monthly change in the unemployment rate it is about +/- 0.2 percentage point.

In general, estimates involving many individuals or establishments have lower standard errors (relative to the size of the estimate) than estimates which are based on a small number of observations. The precision of estimates also is improved when the data are cumulated over time, such as for quarterly and annual averages.

The household and establishment surveys are also affected by *nonsampling error*, which can occur for many reasons, including the failure to sample a segment of the population, inability to obtain information for all respondents in the sample, inability or unwillingness of respondents to provide correct information on a timely basis, mistakes made by respondents, and errors made in the collection or processing of the data.

For example, in the establishment survey, estimates for the most recent 2 months are based on incomplete returns; for this reason, these estimates are labeled preliminary in the tables. It is only after two successive revisions to a monthly estimate, when nearly all sample reports have been received, that the estimate is considered final.

Another major source of nonsampling error in the establishment survey is the inability to capture, on a timely basis, employment generated by new firms. To correct for this systematic underestimation of employment growth, an estimation procedure with two components is used to account for business births. The first component excludes employment losses from business deaths from sample-based estimation in order to offset the missing employment gains from business births. This is incorporated into the sample-based estimation procedure by simply not reflecting sample units going out of business, but imputing to them the same employment trend as the other firms in the sample. This procedure accounts for most of the net birth/death employment.

The second component is an ARIMA time series model designed to estimate the residual net birth/death employment not accounted for by the imputation. The historical time series used to create and test the ARIMA model was derived from the unemployment insurance universe micro-level database and reflects the actual residual net of births and deaths over the past 5 years.

The sample-based estimates from the establishment survey are adjusted once a year (on a lagged basis) to universe counts of payroll employment obtained from administrative records of the unemployment insurance program. The difference between the March sample-based employment estimates and the March universe counts is known as a benchmark revision, and serves as a rough proxy for total survey error. Benchmarks also incorporate changes in the classification of industries when necessary. Over the past decade, absolute benchmark revisions for total nonfarm employment have averaged 0.1 percent, with a range from -0.3 percent to 0.3 percent.

### **Other information**

If you are deaf, hard of hearing, or have a speech disability, please dial 7-1-1 to access telecommunications relay services.

# HOUSEHOLD DATA

**Table A-1. Employment status of the civilian population by sex and age**

[Numbers in thousands]

Employment status, sex, and age	Not seasonally adjusted			Seasonally adjusted <sup>1</sup>					
	Nov. 2024	Oct. 2025	Nov. 2025	Nov. 2024	July 2025	Aug. 2025	Sept. 2025	Oct. 2025	Nov. 2025
<b>TOTAL</b>									
Civilian noninstitutional population.....	269,463	—	274,633	269,463	273,785	274,001	274,226	—	274,633
Civilian labor force.....	168,164	—	171,467	168,304	170,342	170,778	171,248	—	171,571
Participation rate.....	62.4	—	62.4	62.5	62.2	62.3	62.4	—	62.5
Employed.....	161,456	—	164,066	161,183	163,106	163,394	163,645	—	163,741
Employment-population ratio.....	59.9	—	59.7	59.8	59.6	59.6	59.7	—	59.6
Unemployed.....	6,708	—	7,401	7,121	7,236	7,384	7,603	—	7,831
Unemployment rate.....	4.0	—	4.3	4.2	4.2	4.3	4.4	—	4.6
Not in labor force.....	101,299	—	103,165	101,159	103,443	103,223	102,978	—	103,061
People who currently want a job.....	5,133	—	5,774	5,483	6,175	6,354	5,933	—	6,136
<b>Men, 16 years and over</b>									
Civilian noninstitutional population.....	131,371	—	133,957	131,371	133,546	133,651	133,760	—	133,957
Civilian labor force.....	88,922	—	90,525	89,151	90,319	90,882	90,675	—	90,761
Participation rate.....	67.7	—	67.6	67.9	67.6	68.0	67.8	—	67.8
Employed.....	85,296	—	86,582	85,318	86,347	86,886	86,650	—	86,597
Employment-population ratio.....	64.9	—	64.6	64.9	64.7	65.0	64.8	—	64.6
Unemployed.....	3,626	—	3,942	3,833	3,973	3,996	4,024	—	4,164
Unemployment rate.....	4.1	—	4.4	4.3	4.4	4.4	4.4	—	4.6
Not in labor force.....	42,450	—	43,433	42,220	43,227	42,769	43,085	—	43,196
<b>Men, 20 years and over</b>									
Civilian noninstitutional population.....	122,398	—	124,889	122,398	124,462	124,571	124,684	—	124,889
Civilian labor force.....	85,908	—	87,584	85,982	87,111	87,757	87,473	—	87,653
Participation rate.....	70.2	—	70.1	70.2	70.0	70.4	70.2	—	70.2
Employed.....	82,745	—	84,157	82,633	83,660	84,171	83,932	—	84,025
Employment-population ratio.....	67.6	—	67.4	67.5	67.2	67.6	67.3	—	67.3
Unemployed.....	3,164	—	3,427	3,348	3,450	3,586	3,540	—	3,627
Unemployment rate.....	3.7	—	3.9	3.9	4.0	4.1	4.0	—	4.1
Not in labor force.....	36,490	—	37,305	36,417	37,351	36,814	37,211	—	37,237
<b>Women, 16 years and over</b>									
Civilian noninstitutional population.....	138,092	—	140,676	138,092	140,239	140,350	140,466	—	140,676
Civilian labor force.....	79,242	—	80,943	79,153	80,023	79,896	80,573	—	80,810
Participation rate.....	57.4	—	57.5	57.3	57.1	56.9	57.4	—	57.4
Employed.....	76,161	—	77,484	75,865	76,760	76,508	76,994	—	77,144
Employment-population ratio.....	55.2	—	55.1	54.9	54.7	54.5	54.8	—	54.8
Unemployed.....	3,082	—	3,459	3,288	3,263	3,388	3,579	—	3,666
Unemployment rate.....	3.9	—	4.3	4.2	4.1	4.2	4.4	—	4.5
Not in labor force.....	58,850	—	59,733	58,939	60,216	60,455	59,893	—	59,865
<b>Women, 20 years and over</b>									
Civilian noninstitutional population.....	129,428	—	131,935	129,428	131,481	131,597	131,717	—	131,935
Civilian labor force.....	76,149	—	77,725	75,920	76,991	76,820	77,307	—	77,454
Participation rate.....	58.8	—	58.9	58.7	58.6	58.4	58.7	—	58.7
Employed.....	73,386	—	74,736	72,988	74,155	73,881	74,096	—	74,303
Employment-population ratio.....	56.7	—	56.6	56.4	56.4	56.1	56.3	—	56.3
Unemployed.....	2,762	—	2,990	2,932	2,836	2,939	3,211	—	3,150
Unemployment rate.....	3.6	—	3.8	3.9	3.7	3.8	4.2	—	4.1
Not in labor force.....	53,280	—	54,210	53,509	54,490	54,776	54,411	—	54,482
<b>Both sexes, 16 to 19 years</b>									
Civilian noninstitutional population.....	17,636	—	17,808	17,636	17,843	17,833	17,824	—	17,808
Civilian labor force.....	6,107	—	6,158	6,403	6,241	6,200	6,469	—	6,465
Participation rate.....	34.6	—	34.6	36.3	35.0	34.8	36.3	—	36.3
Employed.....	5,325	—	5,173	5,562	5,291	5,342	5,617	—	5,412
Employment-population ratio.....	30.2	—	29.0	31.5	29.7	30.0	31.5	—	30.4
Unemployed.....	782	—	985	841	950	859	852	—	1,054
Unemployment rate.....	12.8	—	16.0	13.1	15.2	13.9	13.2	—	16.3
Not in labor force.....	11,529	—	11,650	11,233	11,602	11,633	11,356	—	11,343

<sup>1</sup> The population figures are not adjusted for seasonal variation; therefore, identical numbers appear in the unadjusted and seasonally adjusted columns.

NOTE: Updated population controls are introduced annually with the release of January data. Data for October 2025 were not collected due to the federal government shutdown.

# HOUSEHOLD DATA

**Table A-2. Employment status of the civilian population by race, sex, and age**

[Numbers in thousands]

Employment status, race, sex, and age	Not seasonally adjusted			Seasonally adjusted <sup>1</sup>					
	Nov. 2024	Oct. 2025	Nov. 2025	Nov. 2024	July 2025	Aug. 2025	Sept. 2025	Oct. 2025	Nov. 2025
<b>WHITE</b>									
Civilian noninstitutional population.....	205,521	—	207,980	205,521	207,569	207,675	207,788	—	207,980
Civilian labor force.....	127,617	—	128,310	127,710	128,628	128,386	128,553	—	128,391
Participation rate.....	62.1	—	61.7	62.1	62.0	61.8	61.9	—	61.7
Employed.....	123,117	—	123,701	122,856	123,864	123,581	123,731	—	123,424
Employment-population ratio.....	59.9	—	59.5	59.8	59.7	59.5	59.5	—	59.3
Unemployed.....	4,500	—	4,609	4,854	4,764	4,806	4,822	—	4,966
Unemployment rate.....	3.5	—	3.6	3.8	3.7	3.7	3.8	—	3.9
Not in labor force.....	77,904	—	79,670	77,811	78,941	79,289	79,235	—	79,589
<b>Men, 20 years and over</b>									
Civilian labor force.....	66,242	—	66,611	66,289	66,741	66,931	66,717	—	66,634
Participation rate.....	69.9	—	69.4	69.9	69.6	69.8	69.5	—	69.4
Employed.....	64,086	—	64,409	63,965	64,414	64,482	64,355	—	64,257
Employment-population ratio.....	67.6	—	67.1	67.5	67.2	67.3	67.1	—	66.9
Unemployed.....	2,156	—	2,202	2,324	2,327	2,450	2,362	—	2,377
Unemployment rate.....	3.3	—	3.3	3.5	3.5	3.7	3.5	—	3.6
<b>Women, 20 years and over</b>									
Civilian labor force.....	56,666	—	57,160	56,462	57,008	56,703	56,994	—	56,955
Participation rate.....	57.8	—	57.6	57.6	57.6	57.3	57.5	—	57.4
Employed.....	54,894	—	55,352	54,545	55,259	54,911	55,073	—	55,009
Employment-population ratio.....	56.0	—	55.8	55.7	55.8	55.5	55.6	—	55.5
Unemployed.....	1,772	—	1,808	1,916	1,749	1,792	1,922	—	1,946
Unemployment rate.....	3.1	—	3.2	3.4	3.1	3.2	3.4	—	3.4
<b>Both sexes, 16 to 19 years</b>									
Civilian labor force.....	4,709	—	4,539	4,959	4,879	4,752	4,841	—	4,801
Participation rate.....	37.0	—	35.6	39.0	38.2	37.2	37.9	—	37.7
Employed.....	4,137	—	3,940	4,346	4,191	4,188	4,303	—	4,158
Employment-population ratio.....	32.5	—	30.9	34.2	32.8	32.8	33.7	—	32.6
Unemployed.....	572	—	599	613	688	564	538	—	643
Unemployment rate.....	12.1	—	13.2	12.4	14.1	11.9	11.1	—	13.4
<b>BLACK OR AFRICAN AMERICAN</b>									
Civilian noninstitutional population.....	35,161	—	35,961	35,161	35,818	35,854	35,892	—	35,961
Civilian labor force.....	21,938	—	22,941	21,952	22,071	22,431	22,582	—	22,963
Participation rate.....	62.4	—	63.8	62.4	61.6	62.6	62.9	—	63.9
Employed.....	20,588	—	21,109	20,556	20,484	20,744	20,885	—	21,068
Employment-population ratio.....	58.6	—	58.7	58.5	57.2	57.9	58.2	—	58.6
Unemployed.....	1,350	—	1,832	1,396	1,587	1,687	1,697	—	1,895
Unemployment rate.....	6.2	—	8.0	6.4	7.2	7.5	7.5	—	8.3
Not in labor force.....	13,223	—	13,020	13,208	13,747	13,423	13,309	—	12,998
<b>Men, 20 years and over</b>									
Civilian labor force.....	10,255	—	10,763	10,267	10,346	10,646	10,590	—	10,780
Participation rate.....	68.6	—	70.3	68.7	67.9	69.8	69.4	—	70.4
Employed.....	9,666	—	9,981	9,655	9,623	9,893	9,889	—	9,971
Employment-population ratio.....	64.7	—	65.2	64.6	63.2	64.9	64.8	—	65.2
Unemployed.....	589	—	783	612	723	753	701	—	809
Unemployment rate.....	5.7	—	7.3	6.0	7.0	7.1	6.6	—	7.5
<b>Women, 20 years and over</b>									
Civilian labor force.....	10,974	—	11,272	10,953	10,941	11,000	11,099	—	11,239
Participation rate.....	62.4	—	62.7	62.3	61.1	61.4	61.9	—	62.5
Employed.....	10,336	—	10,487	10,301	10,247	10,260	10,269	—	10,442
Employment-population ratio.....	58.8	—	58.3	58.6	57.2	57.3	57.2	—	58.1
Unemployed.....	638	—	785	651	694	739	830	—	796
Unemployment rate.....	5.8	—	7.0	5.9	6.3	6.7	7.5	—	7.1
<b>Both sexes, 16 to 19 years</b>									
Civilian labor force.....	709	—	905	733	783	785	894	—	944
Participation rate.....	26.9	—	33.8	27.8	29.2	29.3	33.3	—	35.2
Employed.....	586	—	642	600	614	590	727	—	655
Employment-population ratio.....	22.2	—	23.9	22.8	22.9	22.0	27.1	—	24.4
Unemployed.....	123	—	264	133	170	195	167	—	289
Unemployment rate.....	17.3	—	29.1	18.1	21.7	24.8	18.6	—	30.7

See footnotes at end of table.

# HOUSEHOLD DATA

**Table A-2. Employment status of the civilian population by race, sex, and age — Continued**

[Numbers in thousands]

Employment status, race, sex, and age	Not seasonally adjusted			Seasonally adjusted <sup>1</sup>					
	Nov. 2024	Oct. 2025	Nov. 2025	Nov. 2024	July 2025	Aug. 2025	Sept. 2025	Oct. 2025	Nov. 2025
<b>ASIAN</b>									
Civilian noninstitutional population.....	18,213	—	19,836	18,213	19,313	19,408	19,519	—	19,836
Civilian labor force.....	11,724	—	13,052	11,759	12,530	12,615	12,740	—	13,084
Participation rate.....	64.4	—	65.8	64.6	64.9	65.0	65.3	—	66.0
Employed.....	11,288	—	12,593	11,318	12,036	12,163	12,184	—	12,618
Employment-population ratio.....	62.0	—	63.5	62.1	62.3	62.7	62.4	—	63.6
Unemployed.....	436	—	459	441	494	452	556	—	466
Unemployment rate.....	3.7	—	3.5	3.8	3.9	3.6	4.4	—	3.6
Not in labor force.....	6,489	—	6,784	6,454	6,783	6,793	6,779	—	6,752

<sup>1</sup> The population figures are not adjusted for seasonal variation; therefore, identical numbers appear in the unadjusted and seasonally adjusted columns.

NOTE: Estimates for the above race groups will not sum to totals shown in table A-1 because data are not presented for all races. Updated population controls are introduced annually with the release of January data. Data for October 2025 were not collected due to the federal government shutdown.



# HOUSEHOLD DATA

**Table A-3. Employment status of the Hispanic or Latino population by sex and age**

[Numbers in thousands]

Employment status, sex, and age	Not seasonally adjusted			Seasonally adjusted <sup>1</sup>					
	Nov. 2024	Oct. 2025	Nov. 2025	Nov. 2024	July 2025	Aug. 2025	Sept. 2025	Oct. 2025	Nov. 2025
<b>HISPANIC OR LATINO ETHNICITY</b>									
Civilian noninstitutional population.....	49,385	—	51,971	49,385	51,514	51,629	51,746	—	51,971
Civilian labor force.....	33,097	—	35,081	33,039	34,500	34,579	34,831	—	35,025
Participation rate.....	67.0	—	67.5	66.9	67.0	67.0	67.3	—	67.4
Employed.....	31,435	—	33,401	31,297	32,773	32,758	32,914	—	33,257
Employment-population ratio.....	63.7	—	64.3	63.4	63.6	63.4	63.6	—	64.0
Unemployed.....	1,662	—	1,680	1,743	1,727	1,820	1,918	—	1,768
Unemployment rate.....	5.0	—	4.8	5.3	5.0	5.3	5.5	—	5.0
Not in labor force.....	16,288	—	16,891	16,345	17,014	17,050	16,914	—	16,946
<b>Men, 20 years and over</b>									
Civilian labor force.....	17,694	—	18,658	17,716	18,435	18,509	18,574	—	18,680
Participation rate.....	79.3	—	79.1	79.4	78.9	79.0	79.1	—	79.2
Employed.....	16,972	—	17,871	16,941	17,652	17,623	17,715	—	17,832
Employment-population ratio.....	76.0	—	75.8	75.9	75.6	75.3	75.5	—	75.6
Unemployed.....	722	—	787	775	782	886	859	—	848
Unemployment rate.....	4.1	—	4.2	4.4	4.2	4.8	4.6	—	4.5
<b>Women, 20 years and over</b>									
Civilian labor force.....	13,979	—	14,967	13,879	14,450	14,514	14,684	—	14,863
Participation rate.....	62.3	—	63.4	61.9	61.8	61.9	62.5	—	63.0
Employed.....	13,273	—	14,325	13,154	13,797	13,804	13,872	—	14,203
Employment-population ratio.....	59.2	—	60.7	58.6	59.0	58.9	59.1	—	60.2
Unemployed.....	706	—	642	724	652	710	812	—	660
Unemployment rate.....	5.1	—	4.3	5.2	4.5	4.9	5.5	—	4.4
<b>Both sexes, 16 to 19 years</b>									
Civilian labor force.....	1,424	—	1,456	1,445	1,616	1,556	1,574	—	1,482
Participation rate.....	30.8	—	30.4	31.2	33.8	32.5	32.9	—	31.0
Employed.....	1,190	—	1,205	1,201	1,323	1,331	1,327	—	1,222
Employment-population ratio.....	25.7	—	25.2	26.0	27.7	27.9	27.8	—	25.5
Unemployed.....	234	—	251	244	292	224	247	—	260
Unemployment rate.....	16.4	—	17.2	16.9	18.1	14.4	15.7	—	17.5

<sup>1</sup> The population figures are not adjusted for seasonal variation; therefore, identical numbers appear in the unadjusted and seasonally adjusted columns.

NOTE: People whose ethnicity is identified as Hispanic or Latino may be of any race. Updated population controls are introduced annually with the release of January data. Data for October 2025 were not collected due to the federal government shutdown.

# HOUSEHOLD DATA

**Table A-4. Employment status of the civilian population 25 years and over by educational attainment**

[Numbers in thousands]

Educational attainment	Not seasonally adjusted			Seasonally adjusted					
	Nov. 2024	Oct. 2025	Nov. 2025	Nov. 2024	July 2025	Aug. 2025	Sept. 2025	Oct. 2025	Nov. 2025
<b>Less than a high school diploma</b>									
Civilian labor force.....	9,115	—	8,915	9,074	9,036	8,651	8,871	—	8,870
Participation rate.....	47.4	—	46.9	47.2	49.0	47.5	47.6	—	46.6
Employed.....	8,619	—	8,354	8,530	8,534	8,071	8,268	—	8,264
Employment-population ratio.....	44.8	—	43.9	44.3	46.3	44.3	44.3	—	43.5
Unemployed.....	496	—	562	544	501	580	602	—	606
Unemployment rate.....	5.4	—	6.3	6.0	5.5	6.7	6.8	—	6.8
<b>High school graduates, no college<sup>1</sup></b>									
Civilian labor force.....	35,977	—	37,147	36,038	36,255	36,833	36,162	—	37,197
Participation rate.....	56.8	—	57.9	56.9	56.5	56.9	56.6	—	58.0
Employed.....	34,378	—	35,559	34,380	34,658	35,233	34,638	—	35,559
Employment-population ratio.....	54.3	—	55.4	54.3	54.0	54.4	54.2	—	55.4
Unemployed.....	1,599	—	1,588	1,658	1,597	1,600	1,524	—	1,638
Unemployment rate.....	4.4	—	4.3	4.6	4.4	4.3	4.2	—	4.4
<b>Some college or associate degree</b>									
Civilian labor force.....	35,875	—	36,377	35,658	36,212	36,210	36,573	—	36,258
Participation rate.....	62.9	—	62.1	62.5	63.0	63.6	62.9	—	61.9
Employed.....	34,654	—	35,165	34,370	35,129	35,046	35,319	—	34,986
Employment-population ratio.....	60.7	—	60.0	60.2	61.1	61.5	60.7	—	59.7
Unemployed.....	1,221	—	1,212	1,288	1,083	1,164	1,254	—	1,272
Unemployment rate.....	3.4	—	3.3	3.6	3.0	3.2	3.4	—	3.5
<b>Bachelor's degree and higher<sup>2</sup></b>									
Civilian labor force.....	65,854	—	67,218	65,763	67,178	67,599	67,509	—	67,195
Participation rate.....	72.5	—	72.2	72.5	71.5	71.7	72.1	—	72.2
Employed.....	64,328	—	65,345	64,149	65,339	65,789	65,587	—	65,243
Employment-population ratio.....	70.9	—	70.2	70.7	69.6	69.8	70.0	—	70.1
Unemployed.....	1,525	—	1,872	1,614	1,838	1,810	1,923	—	1,952
Unemployment rate.....	2.3	—	2.8	2.5	2.7	2.7	2.8	—	2.9

<sup>1</sup> Includes people with a high school diploma or equivalent.

<sup>2</sup> Includes people with bachelor's, master's, professional, and doctoral degrees.

NOTE: Detail for the seasonally adjusted data shown in this table will not necessarily add to totals for those 25 years and over because of the independent seasonal adjustment of the various series. Updated population controls are introduced annually with the release of January data. Data for October 2025 were not collected due to the federal government shutdown.

# HOUSEHOLD DATA

**Table A-5. Employment status of the civilian population 18 years and over by veteran status, period of service, and sex, not seasonally adjusted**

[Numbers in thousands]

Employment status, veteran status, and period of service	Total		Men		Women	
	Nov. 2024	Nov. 2025	Nov. 2024	Nov. 2025	Nov. 2024	Nov. 2025
<b>VETERANS, 18 years and over</b>						
Civilian noninstitutional population.....	17,457	17,131	15,401	15,050	2,056	2,081
Civilian labor force.....	8,451	8,225	7,229	7,061	1,223	1,164
Participation rate.....	48.4	48.0	46.9	46.9	59.5	55.9
Employed.....	8,216	7,946	7,037	6,811	1,178	1,135
Employment-population ratio.....	47.1	46.4	45.7	45.3	57.3	54.5
Unemployed.....	236	279	191	250	44	29
Unemployment rate.....	2.8	3.4	2.6	3.5	3.6	2.5
Not in labor force.....	9,006	8,906	8,172	7,989	833	917
<b>Gulf War-era II veterans</b>						
Civilian noninstitutional population.....	5,339	5,519	4,322	4,492	1,017	1,028
Civilian labor force.....	4,268	4,289	3,514	3,599	754	690
Participation rate.....	79.9	77.7	81.3	80.1	74.1	67.1
Employed.....	4,135	4,104	3,414	3,428	721	676
Employment-population ratio.....	77.5	74.4	79.0	76.3	70.9	65.7
Unemployed.....	133	185	100	171	33	14
Unemployment rate.....	3.1	4.3	2.9	4.7	4.3	2.1
Not in labor force.....	1,071	1,230	807	893	263	338
<b>Gulf War-era I veterans</b>						
Civilian noninstitutional population.....	2,860	3,401	2,465	2,915	395	485
Civilian labor force.....	1,950	2,233	1,679	1,921	271	311
Participation rate.....	68.2	65.7	68.1	65.9	68.7	64.1
Employed.....	1,912	2,196	1,649	1,896	263	300
Employment-population ratio.....	66.8	64.6	66.9	65.0	66.7	61.8
Unemployed.....	38	37	30	26	8	11
Unemployment rate.....	2.0	1.7	1.8	1.3	3.0	3.6
Not in labor force.....	910	1,168	787	994	124	174
<b>Vietnam-era and earlier wartime veterans</b>						
Civilian noninstitutional population.....	5,524	4,752	5,289	4,570	235	182
Civilian labor force.....	712	506	683	482	29	24
Participation rate.....	12.9	10.7	12.9	10.5	12.5	13.4
Employed.....	705	487	675	463	29	24
Employment-population ratio.....	12.8	10.3	12.8	10.1	12.5	13.4
Unemployed.....	8	19	8	19	0	0
Unemployment rate.....	1.1	3.7	1.1	3.9	—	—
Not in labor force.....	4,812	4,246	4,606	4,088	206	158
<b>Veterans of other service periods</b>						
Civilian noninstitutional population.....	3,734	3,459	3,325	3,073	409	386
Civilian labor force.....	1,521	1,197	1,353	1,059	168	138
Participation rate.....	40.7	34.6	40.7	34.5	41.1	35.8
Employed.....	1,464	1,159	1,300	1,024	164	135
Employment-population ratio.....	39.2	33.5	39.1	33.3	40.2	34.9
Unemployed.....	57	38	53	35	4	3
Unemployment rate.....	3.7	3.2	3.9	3.3	2.2	2.4
Not in labor force.....	2,213	2,262	1,972	2,014	241	248
<b>NONVETERANS, 18 years and over</b>						
Civilian noninstitutional population.....	242,702	248,161	111,211	114,011	131,491	134,150
Civilian labor force.....	157,548	161,013	80,665	82,394	76,883	78,619
Participation rate.....	64.9	64.9	72.5	72.3	58.5	58.6
Employed.....	151,380	154,262	77,434	78,904	73,946	75,358
Employment-population ratio.....	62.4	62.2	69.6	69.2	56.2	56.2
Unemployed.....	6,168	6,751	3,231	3,490	2,937	3,261
Unemployment rate.....	3.9	4.2	4.0	4.2	3.8	4.1
Not in labor force.....	85,154	87,148	30,546	31,617	54,608	55,531

NOTE: Veterans served on active duty in the U.S. Armed Forces and were not on active duty at the time of the survey. Nonveterans never served on active duty in the U.S. Armed Forces. Veterans could have served anywhere in the world during these periods of service: Gulf War era II (September 2001-present), Gulf War era I (August 1990-August 2001), Vietnam era (August 1964-April 1975), Korean War (July 1950-January 1955), World War II (December 1941-December 1946), and other service periods (all other time periods). Veterans who served in more than one wartime period are classified only in the most recent one. Veterans who served during one of the selected wartime periods and another period are classified only in the wartime period. Dash indicates no data or data that do not meet publication criteria (values not shown where base is less than 75,000).

# HOUSEHOLD DATA

**Table A-6. Employment status of the civilian population by sex, age, and disability status, not seasonally adjusted**

[Numbers in thousands]

Employment status, sex, and age	People with a disability		People with no disability	
	Nov. 2024	Nov. 2025	Nov. 2024	Nov. 2025
<b>TOTAL, 16 years and over</b>				
Civilian noninstitutional population.....	34,844	36,638	234,619	237,995
Civilian labor force.....	8,751	9,592	159,413	161,875
Participation rate.....	25.1	26.2	67.9	68.0
Employed.....	8,130	8,924	153,327	155,143
Employment-population ratio.....	23.3	24.4	65.4	65.2
Unemployed.....	622	668	6,086	6,733
Unemployment rate.....	7.1	7.0	3.8	4.2
Not in labor force.....	26,093	27,046	75,207	76,119
<b>Men, 16 to 64 years</b>				
Civilian labor force.....	3,771	4,013	78,616	79,784
Participation rate.....	42.3	44.2	82.9	82.8
Employed.....	3,472	3,696	75,475	76,371
Employment-population ratio.....	39.0	40.7	79.6	79.2
Unemployed.....	299	318	3,141	3,413
Unemployment rate.....	7.9	7.9	4.0	4.3
Not in labor force.....	5,139	5,059	16,257	16,623
<b>Women, 16 to 64 years</b>				
Civilian labor force.....	3,473	3,931	70,501	71,646
Participation rate.....	39.8	41.5	73.1	73.7
Employed.....	3,225	3,686	67,854	68,631
Employment-population ratio.....	36.9	38.9	70.3	70.6
Unemployed.....	248	245	2,647	3,015
Unemployment rate.....	7.1	6.2	3.8	4.2
Not in labor force.....	5,258	5,541	26,007	25,603
<b>Both sexes, 65 years and over</b>				
Civilian labor force.....	1,507	1,647	10,296	10,445
Participation rate.....	8.8	9.1	23.8	23.6
Employed.....	1,432	1,543	9,998	10,140
Employment-population ratio.....	8.3	8.5	23.1	22.9
Unemployed.....	75	105	298	305
Unemployment rate.....	5.0	6.4	2.9	2.9
Not in labor force.....	15,696	16,446	32,943	33,893

NOTE: A person with a disability has at least one of the following conditions: is deaf or has serious difficulty hearing; is blind or has serious difficulty seeing even when wearing glasses; has serious difficulty concentrating, remembering, or making decisions because of a physical, mental, or emotional condition; has serious difficulty walking or climbing stairs; has difficulty dressing or bathing; or has difficulty doing errands alone such as visiting a doctor's office or shopping because of a physical, mental, or emotional condition. Updated population controls are introduced annually with the release of January data.

# HOUSEHOLD DATA

**Table A-7. Employment status of the civilian population by nativity and sex, not seasonally adjusted**

[Numbers in thousands]

Employment status and nativity	Total		Men		Women	
	Nov. 2024	Nov. 2025	Nov. 2024	Nov. 2025	Nov. 2024	Nov. 2025
<b>Foreign born, 16 years and over</b>						
Civilian noninstitutional population.....	48,707	48,558	23,897	23,579	24,810	24,979
Civilian labor force.....	32,272	32,205	18,429	18,000	13,843	14,206
Participation rate.....	66.3	66.3	77.1	76.3	55.8	56.9
Employed.....	30,823	30,802	17,698	17,315	13,126	13,487
Employment-population ratio.....	63.3	63.4	74.1	73.4	52.9	54.0
Unemployed.....	1,449	1,403	732	685	717	719
Unemployment rate.....	4.5	4.4	4.0	3.8	5.2	5.1
Not in labor force.....	16,435	16,353	5,468	5,579	10,967	10,773
<b>Native born, 16 years and over</b>						
Civilian noninstitutional population.....	220,756	226,075	107,474	110,378	113,282	115,696
Civilian labor force.....	135,892	139,262	70,492	72,525	65,399	66,737
Participation rate.....	61.6	61.6	65.6	65.7	57.7	57.7
Employed.....	130,633	133,264	67,598	69,267	63,035	63,997
Employment-population ratio.....	59.2	58.9	62.9	62.8	55.6	55.3
Unemployed.....	5,259	5,998	2,895	3,258	2,364	2,740
Unemployment rate.....	3.9	4.3	4.1	4.5	3.6	4.1
Not in labor force.....	84,864	86,813	36,982	37,853	47,882	48,959

NOTE: The foreign born are those residing in the United States who were not U.S. citizens at birth. That is, they were born outside the United States or one of its outlying areas such as Puerto Rico or Guam, to parents neither of whom was a U.S. citizen. The native born are people who were born in the United States or one of its outlying areas such as Puerto Rico or Guam or who were born abroad of at least one parent who was a U.S. citizen. Updated population controls are introduced annually with the release of January data.

# HOUSEHOLD DATA

**Table A-8. Employed people by class of worker and part-time status**

[In thousands]

Category	Not seasonally adjusted			Seasonally adjusted					
	Nov. 2024	Oct. 2025	Nov. 2025	Nov. 2024	July 2025	Aug. 2025	Sept. 2025	Oct. 2025	Nov. 2025
<b>CLASS OF WORKER</b>									
Agriculture and related industries.....	2,163	—	2,148	2,202	2,216	2,238	2,198	—	2,189
Wage and salary workers <sup>1</sup> .....	1,446	—	1,374	1,489	1,610	1,530	1,519	—	1,444
Self-employed workers, unincorporated.....	688	—	760	701	554	670	657	—	761
Unpaid family workers.....	29	—	15	—	—	—	—	—	—
Nonagricultural industries.....	159,294	—	161,918	159,070	160,962	161,165	161,411	—	161,637
Wage and salary workers <sup>1</sup> .....	150,153	—	152,351	149,881	151,816	151,837	152,294	—	152,017
Government.....	22,456	—	22,346	22,188	21,635	22,446	22,554	—	22,051
Private industries.....	127,697	—	130,005	127,709	130,131	129,247	129,757	—	129,963
Private households.....	629	—	584	—	—	—	—	—	—
Other industries.....	127,068	—	129,422	127,155	129,534	128,781	129,215	—	129,482
Self-employed workers, unincorporated.....	9,095	—	9,499	9,122	9,060	9,247	9,073	—	9,496
Unpaid family workers.....	46	—	68	—	—	—	—	—	—
<b>PEOPLE AT WORK PART TIME<sup>2</sup></b>									
<b>  All industries</b>									
Part time for economic reasons <sup>3</sup> .....	4,325	—	5,350	4,469	4,684	4,749	4,579	—	5,488
Slack work or business conditions.....	3,055	—	3,379	3,125	3,035	3,063	3,123	—	3,444
Could only find part-time work.....	1,001	—	1,612	1,084	1,264	1,308	1,170	—	1,759
Part time for noneconomic reasons <sup>4</sup> .....	23,127	—	23,896	22,380	22,770	23,298	22,756	—	23,126
<b>    Nonagricultural industries</b>									
Part time for economic reasons <sup>3</sup> .....	4,252	—	5,288	4,387	4,559	4,682	4,491	—	5,419
Slack work or business conditions.....	2,990	—	3,357	3,072	2,932	3,010	3,048	—	3,434
Could only find part-time work.....	999	—	1,600	1,077	1,257	1,309	1,162	—	1,738
Part time for noneconomic reasons <sup>4</sup> .....	22,756	—	23,502	22,029	22,392	22,855	22,355	—	22,745

<sup>1</sup> Includes self-employed workers whose businesses are incorporated.

<sup>2</sup> Refers to those who worked 1 to 34 hours during the survey reference week and excludes employed people who were absent from their jobs for the entire week.

<sup>3</sup> Refers to those who worked 1 to 34 hours during the reference week for an economic reason such as slack work or unfavorable business conditions, inability to find full-time work, or seasonal declines in demand.

<sup>4</sup> Refers to people who usually work part time for noneconomic reasons such as childcare problems, family or personal obligations, school or training, retirement or Social Security limits on earnings, and other reasons. This excludes people who usually work full time but worked only 1 to 34 hours during the reference week for reasons such as vacations, holidays, illness, and bad weather.

- Data not available.

NOTE: Detail for the seasonally adjusted data shown in this table will not necessarily add to totals because of the independent seasonal adjustment of the various series. Updated population controls are introduced annually with the release of January data. Data for October 2025 were not collected due to the federal government shutdown.

# HOUSEHOLD DATA

**Table A-9. Selected employment indicators**

[Numbers in thousands]

Characteristic	Not seasonally adjusted			Seasonally adjusted					
	Nov. 2024	Oct. 2025	Nov. 2025	Nov. 2024	July 2025	Aug. 2025	Sept. 2025	Oct. 2025	Nov. 2025
<b>AGE AND SEX</b>									
Total, 16 years and over.....	161,456	—	164,066	161,183	163,106	163,394	163,645	—	163,741
16 to 19 years.....	5,325	—	5,173	5,562	5,291	5,342	5,617	—	5,412
16 to 17 years.....	1,861	—	1,858	1,930	1,985	1,911	2,115	—	1,936
18 to 19 years.....	3,465	—	3,315	3,630	3,290	3,415	3,474	—	3,472
20 years and over.....	156,131	—	158,893	155,621	157,815	158,052	158,028	—	158,329
20 to 24 years.....	14,152	—	14,470	14,142	14,321	13,972	14,166	—	14,446
25 years and over.....	141,979	—	144,423	141,409	143,522	143,981	143,874	—	143,876
25 to 54 years.....	104,014	—	106,212	103,615	105,425	105,877	105,879	—	105,818
25 to 34 years.....	35,642	—	36,293	35,463	36,169	36,250	36,046	—	36,119
35 to 44 years.....	36,365	—	37,310	36,274	37,041	37,252	37,354	—	37,224
45 to 54 years.....	32,007	—	32,610	31,878	32,216	32,375	32,479	—	32,475
55 years and over.....	37,966	—	38,211	37,794	38,097	38,104	37,996	—	38,058
Men, 16 years and over.....	85,296	—	86,582	85,318	86,347	86,886	86,650	—	86,597
16 to 19 years.....	2,551	—	2,425	2,685	2,686	2,715	2,718	—	2,571
16 to 17 years.....	825	—	867	886	931	855	960	—	936
18 to 19 years.....	1,726	—	1,558	1,797	1,742	1,839	1,734	—	1,630
20 years and over.....	82,745	—	84,157	82,633	83,660	84,171	83,932	—	84,025
20 to 24 years.....	7,135	—	7,349	7,172	7,266	7,159	7,315	—	7,387
25 years and over.....	75,610	—	76,809	75,425	76,392	76,932	76,623	—	76,616
25 to 54 years.....	55,232	—	56,368	55,113	55,948	56,382	56,314	—	56,238
25 to 34 years.....	18,907	—	19,346	18,838	19,264	19,343	19,204	—	19,284
35 to 44 years.....	19,427	—	19,975	19,418	19,737	20,004	20,026	—	19,957
45 to 54 years.....	16,898	—	17,047	16,856	16,947	17,035	17,084	—	16,997
55 years and over.....	20,378	—	20,440	20,312	20,444	20,550	20,309	—	20,377
Women, 16 years and over.....	76,161	—	77,484	75,865	76,760	76,508	76,994	—	77,144
16 to 19 years.....	2,774	—	2,748	2,877	2,605	2,627	2,899	—	2,840
16 to 17 years.....	1,036	—	991	1,043	1,054	1,056	1,155	—	1,000
18 to 19 years.....	1,738	—	1,757	1,832	1,548	1,576	1,740	—	1,841
20 years and over.....	73,386	—	74,736	72,988	74,155	73,881	74,096	—	74,303
20 to 24 years.....	7,017	—	7,122	6,970	7,055	6,813	6,851	—	7,059
25 years and over.....	66,369	—	67,614	65,985	67,129	67,049	67,252	—	67,260
25 to 54 years.....	48,781	—	49,844	48,502	49,477	49,495	49,565	—	49,580
25 to 34 years.....	16,735	—	16,946	16,625	16,905	16,908	16,842	—	16,835
35 to 44 years.....	16,938	—	17,335	16,856	17,304	17,247	17,328	—	17,267
45 to 54 years.....	15,108	—	15,562	15,022	15,269	15,340	15,395	—	15,477
55 years and over.....	17,588	—	17,770	17,482	17,652	17,554	17,686	—	17,681
<b>MARITAL STATUS</b>									
Married men, spouse present <sup>1</sup> .....	45,903	—	46,363	45,828	46,905	46,898	46,201	—	46,311
Married women, spouse present <sup>1</sup> .....	37,193	—	37,563	36,993	37,921	38,006	38,009	—	37,426
Women who maintain families <sup>2</sup> .....	9,632	—	10,238	—	—	—	—	—	—
<b>FULL- OR PART-TIME STATUS</b>									
Full-time workers <sup>3</sup> .....	133,364	—	134,102	133,423	134,837	134,480	135,153	—	134,170
Part-time workers <sup>4</sup> .....	28,092	—	29,964	27,671	28,437	29,034	28,461	—	29,486
<b>MULTIPLE JOBHOLDERS</b>									
Total multiple jobholders.....	8,716	—	9,471	8,577	8,342	8,785	8,802	—	9,301
Percent of total employed.....	5.4	—	5.8	5.3	5.1	5.4	5.4	—	5.7
<b>SELF-EMPLOYMENT</b>									
Self-employed workers, incorporated.....	6,834	—	7,140	—	—	—	—	—	—
Self-employed workers, unincorporated.....	9,783	—	10,259	9,823	9,613	9,917	9,731	—	10,257

<sup>1</sup> Beginning with data for January 2020, refers to people in both opposite-sex and same-sex married couples. Prior to January 2020, referred to people in opposite-sex married couples only.

<sup>2</sup> Beginning with data for January 2020, refers to female householders residing with one or more family members, but not a spouse of either sex. Prior to January 2020, referred to female householders residing with one or more family members, but not an opposite-sex spouse.

<sup>3</sup> Employed full-time workers are people who usually work 35 hours or more per week.

<sup>4</sup> Employed part-time workers are people who usually work less than 35 hours per week.

- Data not available.

NOTE: Detail for the seasonally adjusted data shown in this table will not necessarily add to totals because of the independent seasonal adjustment of the various series. Updated population controls are introduced annually with the release of January data. Data for October 2025 were not collected due to the federal government shutdown.

# HOUSEHOLD DATA

**Table A-10. Selected unemployment indicators, seasonally adjusted**

Characteristic	Number of unemployed people (in thousands)			Unemployment rates					
	Nov. 2024	Oct. 2025	Nov. 2025	Nov. 2024	July 2025	Aug. 2025	Sept. 2025	Oct. 2025	Nov. 2025
<b>AGE AND SEX</b>									
Total, 16 years and over.....	7,121	—	7,831	4.2	4.2	4.3	4.4	—	4.6
16 to 19 years.....	841	—	1,054	13.1	15.2	13.9	13.2	—	16.3
16 to 17 years.....	316	—	401	14.1	14.8	15.4	14.7	—	17.1
18 to 19 years.....	518	—	640	12.5	15.6	13.0	12.5	—	15.6
20 years and over.....	6,280	—	6,777	3.9	3.8	4.0	4.1	—	4.1
20 to 24 years.....	1,200	—	1,306	7.8	7.9	9.2	9.2	—	8.3
25 years and over.....	5,139	—	5,512	3.5	3.4	3.4	3.5	—	3.7
25 to 54 years.....	3,958	—	4,304	3.7	3.6	3.6	3.7	—	3.9
25 to 34 years.....	1,667	—	1,890	4.5	4.3	4.4	4.8	—	5.0
35 to 44 years.....	1,368	—	1,326	3.6	3.4	3.5	3.2	—	3.4
45 to 54 years.....	923	—	1,088	2.8	2.9	2.9	2.8	—	3.2
55 years and over.....	1,180	—	1,202	3.0	2.9	2.9	3.3	—	3.1
Men, 16 years and over.....	3,833	—	4,164	4.3	4.4	4.4	4.4	—	4.6
16 to 19 years.....	485	—	537	15.3	16.3	13.1	15.1	—	17.3
16 to 17 years.....	200	—	205	18.4	18.1	17.5	16.7	—	18.0
18 to 19 years.....	287	—	336	13.8	15.3	11.2	14.7	—	17.1
20 years and over.....	3,348	—	3,627	3.9	4.0	4.1	4.0	—	4.1
20 to 24 years.....	707	—	742	9.0	8.3	9.9	9.4	—	9.1
25 years and over.....	2,693	—	2,925	3.4	3.5	3.5	3.5	—	3.7
25 to 54 years.....	2,052	—	2,247	3.6	3.7	3.7	3.5	—	3.8
25 to 34 years.....	903	—	956	4.6	4.6	4.6	5.0	—	4.7
35 to 44 years.....	667	—	711	3.3	3.4	3.5	2.7	—	3.4
45 to 54 years.....	482	—	581	2.8	2.9	3.0	2.8	—	3.3
55 years and over.....	641	—	677	3.1	2.9	3.0	3.4	—	3.2
Women, 16 years and over.....	3,288	—	3,666	4.2	4.1	4.2	4.4	—	4.5
16 to 19 years.....	357	—	516	11.0	14.1	14.6	11.3	—	15.4
16 to 17 years.....	116	—	195	10.0	11.7	13.6	13.0	—	16.3
18 to 19 years.....	231	—	304	11.2	16.0	15.1	10.2	—	14.2
20 years and over.....	2,932	—	3,150	3.9	3.7	3.8	4.2	—	4.1
20 to 24 years.....	493	—	564	6.6	7.4	8.5	9.0	—	7.4
25 years and over.....	2,445	—	2,588	3.6	3.3	3.3	3.6	—	3.7
25 to 54 years.....	1,906	—	2,056	3.8	3.5	3.5	3.8	—	4.0
25 to 34 years.....	764	—	934	4.4	3.9	4.2	4.6	—	5.3
35 to 44 years.....	701	—	615	4.0	3.5	3.4	3.8	—	3.4
45 to 54 years.....	441	—	507	2.9	2.9	2.8	2.8	—	3.2
55 years and over.....	543	—	530	3.0	2.8	2.9	3.1	—	2.9
<b>MARITAL STATUS</b>									
Married men, spouse present <sup>1</sup> .....	1,016	—	1,147	2.2	2.1	2.4	2.3	—	2.4
Married women, spouse present <sup>1</sup> .....	997	—	1,046	2.6	2.6	2.5	2.3	—	2.7
Women who maintain families <sup>2</sup> .....	599	—	680	5.9	6.5	6.3	6.1	—	6.2
<b>FULL- OR PART-TIME STATUS</b>									
Full-time workers <sup>3</sup> .....	5,796	—	6,348	4.2	4.3	4.3	4.4	—	4.5
Part-time workers <sup>4</sup> .....	1,366	—	1,500	4.7	4.3	4.7	4.4	—	4.8

<sup>1</sup> Beginning with data for January 2020, refers to people in both opposite-sex and same-sex married couples. Prior to January 2020, referred to people in opposite-sex married couples only.

<sup>2</sup> Data are not seasonally adjusted. Beginning with data for January 2020, refers to female householders residing with one or more family members, but not a spouse of either sex. Prior to January 2020, referred to female householders residing with one or more family members, but not an opposite-sex spouse.

<sup>3</sup> Full-time workers are unemployed people who have expressed a desire to work full time (35 hours or more per week) or are on layoff from full-time jobs.

<sup>4</sup> Part-time workers are unemployed people who have expressed a desire to work part time (less than 35 hours per week) or are on layoff from part-time jobs.

NOTE: Detail for the seasonally adjusted data shown in this table will not necessarily add to totals because of the independent seasonal adjustment of the various series. Updated population controls are introduced annually with the release of January data. Data for October 2025 were not collected due to the federal government shutdown.



# HOUSEHOLD DATA

**Table A-11. Unemployed people by reason for unemployment**

[Numbers in thousands]

Reason	Not seasonally adjusted			Seasonally adjusted					
	Nov. 2024	Oct. 2025	Nov. 2025	Nov. 2024	July 2025	Aug. 2025	Sept. 2025	Oct. 2025	Nov. 2025
<b>NUMBER OF UNEMPLOYED</b>									
Job losers and people who completed temporary jobs.....	3,149	—	3,329	3,394	3,405	3,437	3,525	—	3,559
On temporary layoff.....	597	—	834	787	940	886	833	—	1,004
Not on temporary layoff.....	2,552	—	2,496	2,607	2,465	2,552	2,691	—	2,555
Permanent job losers.....	1,838	—	1,894	1,871	1,887	1,925	2,023	—	1,931
People who completed temporary jobs. . . .	714	—	602	736	577	627	669	—	624
Job leavers.....	844	—	853	854	784	784	861	—	862
Reentrants.....	2,048	—	2,488	2,182	2,180	2,287	2,325	—	2,618
New entrants.....	667	—	731	690	985	786	813	—	765
<b>PERCENT DISTRIBUTION</b>									
Job losers and people who completed temporary jobs.....	46.9	—	45.0	47.7	46.3	47.1	46.9	—	45.6
On temporary layoff.....	8.9	—	11.3	11.1	12.8	12.1	11.1	—	12.9
Not on temporary layoff.....	38.0	—	33.7	36.6	33.5	35.0	35.8	—	32.7
Job leavers.....	12.6	—	11.5	12.0	10.7	10.7	11.4	—	11.0
Reentrants.....	30.5	—	33.6	30.6	29.6	31.3	30.9	—	33.5
New entrants.....	9.9	—	9.9	9.7	13.4	10.8	10.8	—	9.8
<b>UNEMPLOYED AS A PERCENT OF THE CIVILIAN LABOR FORCE</b>									
Job losers and people who completed temporary jobs.....	1.9	—	1.9	2.0	2.0	2.0	2.1	—	2.1
Job leavers.....	0.5	—	0.5	0.5	0.5	0.5	0.5	—	0.5
Reentrants.....	1.2	—	1.5	1.3	1.3	1.3	1.4	—	1.5
New entrants.....	0.4	—	0.4	0.4	0.6	0.5	0.5	—	0.4

NOTE: Detail for the seasonally adjusted data shown in this table will not necessarily add to total unemployed in table A-1 because of the independent seasonal adjustment of the various series. Updated population controls are introduced annually with the release of January data. Data for October 2025 were not collected due to the federal government shutdown.

# HOUSEHOLD DATA

**Table A-12. Unemployed people by duration of unemployment**

[Numbers in thousands]

Duration	Not seasonally adjusted			Seasonally adjusted					
	Nov. 2024	Oct. 2025	Nov. 2025	Nov. 2024	July 2025	Aug. 2025	Sept. 2025	Oct. 2025	Nov. 2025
<b>NUMBER OF UNEMPLOYED</b>									
Less than 5 weeks.....	2,005	—	2,357	2,208	2,299	2,476	2,227	—	2,543
5 to 14 weeks.....	1,942	—	2,066	2,063	2,034	2,049	2,367	—	2,202
15 weeks and over.....	2,760	—	2,978	2,890	2,993	2,977	3,105	—	3,099
15 to 26 weeks.....	1,157	—	1,116	1,236	1,167	1,047	1,290	—	1,189
27 weeks and over.....	1,604	—	1,862	1,654	1,826	1,930	1,814	—	1,910
Average (mean) duration, in weeks.....	24.3	—	23.7	23.6	24.1	24.5	24.1	—	23.0
Median duration, in weeks.....	11.0	—	10.0	10.5	10.2	9.8	10.0	—	9.5
<b>PERCENT DISTRIBUTION</b>									
Less than 5 weeks.....	29.9	—	31.8	30.8	31.4	33.0	28.9	—	32.4
5 to 14 weeks.....	28.9	—	27.9	28.8	27.8	27.3	30.7	—	28.1
15 weeks and over.....	41.2	—	40.2	40.4	40.9	39.7	40.3	—	39.5
15 to 26 weeks.....	17.2	—	15.1	17.3	15.9	14.0	16.8	—	15.2
27 weeks and over.....	23.9	—	25.2	23.1	24.9	25.7	23.6	—	24.3

NOTE: Detail for the seasonally adjusted data shown in this table will not necessarily add to total unemployed in table A-1 because of the independent seasonal adjustment of the various series. Updated population controls are introduced annually with the release of January data. Data for October 2025 were not collected due to the federal government shutdown.

# HOUSEHOLD DATA

**Table A-13. Employed and unemployed people by occupation, not seasonally adjusted**

[Numbers in thousands]

Occupation	Employed		Unemployed		Unemployment rates	
	Nov. 2024	Nov. 2025	Nov. 2024	Nov. 2025	Nov. 2024	Nov. 2025
Total, 16 years and over <sup>1</sup> .....	161,456	164,066	6,708	7,401	4.0	4.3
Management, professional, and related occupations.....	71,258	72,090	1,581	1,851	2.2	2.5
Management, business, and financial operations occupations.....	30,645	31,109	701	795	2.2	2.5
Professional and related occupations.....	40,613	40,981	879	1,056	2.1	2.5
Service occupations.....	26,351	26,797	1,429	1,491	5.1	5.3
Sales and office occupations.....	29,778	31,087	1,287	1,474	4.1	4.5
Sales and related occupations.....	13,713	13,985	594	743	4.2	5.0
Office and administrative support occupations.....	16,066	17,102	693	730	4.1	4.1
Natural resources, construction, and maintenance occupations.....	14,352	14,057	705	787	4.7	5.3
Farming, fishing, and forestry occupations.....	864	825	53	147	5.8	15.1
Construction and extraction occupations.....	8,466	8,320	498	475	5.6	5.4
Installation, maintenance, and repair occupations.....	5,021	4,912	154	166	3.0	3.3
Production, transportation, and material moving occupations.....	19,716	20,035	1,030	1,028	5.0	4.9
Production occupations.....	7,872	7,967	312	299	3.8	3.6
Transportation and material moving occupations.....	11,844	12,068	718	729	5.7	5.7

<sup>1</sup> People with no previous work experience and people whose last job was in the U.S. Armed Forces are included in the unemployed total.

NOTE: Updated population controls are introduced annually with the release of January data.

# HOUSEHOLD DATA

**Table A-14. Unemployed people by industry and class of worker, not seasonally adjusted**

Industry and class of worker	Number of unemployed people (in thousands)		Unemployment rates	
	Nov. 2024	Nov. 2025	Nov. 2024	Nov. 2025
Total, 16 years and over <sup>1</sup> .....	6,708	7,401	4.0	4.3
Nonagricultural private wage and salary workers.....	5,186	5,521	3.9	4.1
Mining, quarrying, and oil and gas extraction.....	12	50	1.9	9.0
Construction.....	482	431	4.6	4.1
Manufacturing.....	517	507	3.4	3.3
Durable goods.....	344	270	3.5	2.6
Nondurable goods.....	172	237	3.2	4.5
Wholesale and retail trade.....	924	1,092	4.8	5.6
Transportation and utilities.....	349	371	4.3	4.4
Information.....	58	125	2.3	5.0
Financial activities.....	240	210	2.4	2.1
Professional and business services.....	787	857	4.0	4.2
Education and health services.....	781	810	3.0	3.0
Leisure and hospitality.....	830	802	6.2	5.9
Other services.....	207	265	3.0	3.8
Agriculture and related private wage and salary workers.....	54	175	3.7	11.6
Government workers.....	372	613	1.6	2.7
Self-employed workers, unincorporated, and unpaid family workers.....	429	360	4.2	3.4

<sup>1</sup> People with no previous work experience and people whose last job was in the U.S. Armed Forces are included in the unemployed total.

NOTE: Updated population controls are introduced annually with the release of January data. Effective with January 2025 data, industries reflect the introduction of the 2022 Census industry classification system, derived from the 2022 North American Industry Classification System (NAICS). No historical data have been revised. Data for 2025 are not strictly comparable with earlier years.

# HOUSEHOLD DATA

**Table A-15. Alternative measures of labor underutilization**

[Percent]

Measure	Not seasonally adjusted			Seasonally adjusted					
	Nov. 2024	Oct. 2025	Nov. 2025	Nov. 2024	July 2025	Aug. 2025	Sept. 2025	Oct. 2025	Nov. 2025
U-1 People unemployed 15 weeks or longer, as a percent of the civilian labor force.....	1.6	—	1.7	1.7	1.8	1.7	1.8	—	1.8
U-2 Job losers and people who completed temporary jobs, as a percent of the civilian labor force.....	1.9	—	1.9	2.0	2.0	2.0	2.1	—	2.1
U-3 Total unemployed, as a percent of the civilian labor force (official unemployment rate).....	4.0	—	4.3	4.2	4.2	4.3	4.4	—	4.6
U-4 Total unemployed plus discouraged workers, as a percent of the civilian labor force plus discouraged workers.....	4.2	—	4.7	4.5	4.5	4.6	4.7	—	4.9
U-5 Total unemployed, plus discouraged workers, plus all other people marginally attached to the labor force, as a percent of the civilian labor force plus all people marginally attached to the labor force.....	4.9	—	5.4	5.1	5.2	5.3	5.4	—	5.6
U-6 Total unemployed, plus all people marginally attached to the labor force, plus total employed part time for economic reasons, as a percent of the civilian labor force plus all people marginally attached to the labor force.....	7.4	—	8.4	7.7	7.9	8.1	8.0	—	8.7

NOTE: People marginally attached to the labor force are those who currently are neither working nor looking for work but indicate that they want and are available for a job and have looked for work sometime in the past 12 months. Discouraged workers, a subset of the marginally attached, have given a job-market related reason for not currently looking for work. People employed part time for economic reasons are those who want and are available for full-time work but have had to settle for a part-time schedule. Updated population controls are introduced annually with the release of January data. Data for October 2025 were not collected due to the federal government shutdown.

# HOUSEHOLD DATA

**Table A-16. People not in the labor force and multiple jobholders by sex, not seasonally adjusted**

[Numbers in thousands]

Category	Total		Men		Women	
	Nov. 2024	Nov. 2025	Nov. 2024	Nov. 2025	Nov. 2024	Nov. 2025
<b>NOT IN THE LABOR FORCE</b>						
Total not in the labor force.....	101,299	103,165	42,450	43,433	58,850	59,733
People who currently want a job.....	5,133	5,774	2,290	2,841	2,843	2,933
Marginally attached to the labor force <sup>1</sup> .....	1,615	1,873	853	984	762	889
Discouraged workers <sup>2</sup> .....	427	681	234	442	194	240
Other people marginally attached to the labor force <sup>3</sup> .....	1,188	1,192	619	542	568	649
<b>MULTIPLE JOBHOLDERS</b>						
Total multiple jobholders <sup>4</sup> .....	8,716	9,471	4,075	4,385	4,641	5,086
Percent of total employed.....	5.4	5.8	4.8	5.1	6.1	6.6
Primary job full time, secondary job part time.....	4,954	5,278	2,505	2,709	2,449	2,569
Primary and secondary jobs both part time.....	2,161	2,525	762	879	1,400	1,646
Primary and secondary jobs both full time.....	348	412	184	195	164	217
Hours vary on primary or secondary job.....	1,207	1,173	601	569	606	604

<sup>1</sup> Data refer to people who want a job, have searched for work during the prior 12 months, and were available to take a job during the reference week, but had not looked for work in the past 4 weeks.

<sup>2</sup> Includes those who did not actively look for work in the prior 4 weeks for reasons such as thinks no work available, could not find work, lacks schooling or training, employer thinks too young or old, and other types of discrimination.

<sup>3</sup> Includes those who did not actively look for work in the prior 4 weeks for such reasons as school or family responsibilities, ill health, and transportation problems, as well as a number for whom reason for nonparticipation was not determined.

<sup>4</sup> Includes a small number of people who work part time on their primary job and full time on their secondary job(s), not shown separately.

NOTE: Updated population controls are introduced annually with the release of January data.

# ESTABLISHMENT DATA

## Table B-1. Employees on nonfarm payrolls by industry sector and selected industry detail

[In thousands]

Industry	Not seasonally adjusted				Seasonally adjusted				
	Nov. 2024	Sept. 2025	Oct. 2025 <sup>P</sup>	Nov. 2025 <sup>P</sup>	Nov. 2024	Sept. 2025	Oct. 2025 <sup>P</sup>	Nov. 2025 <sup>P</sup>	Change from: Oct.2025 - Nov.2025 <sup>P</sup>
Total nonfarm.....	159,882	159,732	160,411	160,652	158,619	159,593	159,488	159,552	64
Total private.....	135,893	136,145	136,710	136,842	135,095	136,027	136,079	136,148	69
Goods-producing.....	21,744	21,783	21,787	21,699	21,669	21,627	21,618	21,637	19
Mining and logging.....	626	615	615	610	625	611	612	608	-4
Logging.....	39.6	37.6	36.6	35.6	38.8	36.6	35.7	35.6	-0.1
Mining, quarrying, and oil and gas extraction..	586.8	577.3	578.7	574.1	585.8	574.2	576.5	572.0	-4.5
Oil and gas extraction.....	123.7	119.6	120.1	121.0	122.9	120.1	120.5	121.2	0.7
Mining (except oil and gas).....	192.5	193.2	193.1	192.7	192.0	191.3	191.5	192.2	0.7
Coal mining.....	42.3	40.5	40.5	41.0	42.3	40.5	40.7	41.2	0.5
Metal ore mining.....	44.7	44.3	44.6	45.1	45.0	44.5	44.9	45.2	0.3
Nonmetallic mineral mining and quarrying.....	105.5	108.4	108.0	106.6	104.8	106.3	105.9	105.8	-0.1
Support activities for mining.....	270.6	264.5	265.5	260.4	270.9	262.8	264.5	258.6	-5.9
Construction.....	8,343	8,442	8,462	8,395	8,274	8,305	8,304	8,332	28
Construction of buildings.....	1,871.6	1,879.8	1,888.3	1,883.8	1,865.5	1,870.0	1,869.6	1,878.1	8.5
Residential building construction.....	954.5	959.0	966.6	961.9	951.4	953.8	954.7	958.1	3.4
Nonresidential building construction.....	917.1	920.8	921.7	921.9	914.1	916.2	914.9	920.0	5.1
Heavy and civil engineering construction.....	1,187.7	1,231.1	1,236.2	1,211.7	1,165.8	1,185.0	1,186.2	1,191.2	5.0
Specialty trade contractors.....	5,283.4	5,331.2	5,337.0	5,299.8	5,242.9	5,249.9	5,247.9	5,262.9	15.0
Residential specialty trade contractors.....	2,426.6	2,401.0	2,404.6	2,371.8	2,407.3	2,366.2	2,362.1	2,358.4	-3.7
Nonresidential specialty trade contractors...	2,856.8	2,930.2	2,932.4	2,928.0	2,835.6	2,883.7	2,885.8	2,904.5	18.7
Manufacturing.....	12,775	12,726	12,710	12,694	12,770	12,711	12,702	12,697	-5
Durable goods.....	7,931	7,867	7,853	7,853	7,925	7,867	7,860	7,856	-4
Wood product manufacturing.....	415.1	409.8	405.8	402.8	415.6	409.0	407.1	404.8	-2.3
Nonmetallic mineral product manufacturing.....	429.0	435.8	431.8	429.0	425.4	432.1	428.5	427.1	-1.4
Primary metal manufacturing.....	370.8	374.7	373.6	371.5	372.3	374.4	373.6	372.4	-1.2
Fabricated metal product manufacturing...	1,436.1	1,435.9	1,440.4	1,441.3	1,436.6	1,439.1	1,443.4	1,445.3	1.9
Machinery manufacturing.....	1,113.8	1,102.9	1,101.5	1,102.9	1,114.9	1,105.9	1,105.6	1,104.6	-1.0
Computer and electronic product manufacturing.....	1,017.5	1,000.7	998.1	998.9	1,018.9	1,001.4	999.7	999.7	0.0
Computer and peripheral equipment manufacturing.....	110.5	109.8	108.0	108.1	110.4	109.7	107.9	108.0	0.1
Communications equipment manufacturing.....	82.1	83.3	84.0	83.5	82.0	83.3	84.0	83.4	-0.6
Semiconductor and other electronic component manufacturing.....	385.6	367.7	364.8	365.1	386.3	368.1	365.6	366.2	0.6
Navigational, measuring, electromedical, and control instruments manufacturing.....	409.3	411.7	412.8	413.8	410.3	412.3	413.8	413.9	0.1
Manufacturing and reproducing magnetic and optical media and audio and video equipment manufacturing.....	30.0	28.2	28.5	28.4	29.9	28.0	28.4	28.2	-0.2
Electrical equipment, appliance, and component manufacturing.....	408.8	406.0	406.7	408.6	409.2	406.6	406.7	408.9	2.2
Transportation equipment manufacturing <sup>1</sup> ...	1,787.6	1,757.3	1,752.4	1,757.0	1,781.3	1,751.5	1,751.3	1,752.8	1.5
Motor vehicles and parts <sup>2</sup> .....	1,015.2	992.8	986.7	984.3	1,010.9	989.1	987.1	982.2	-4.9
Furniture and related product manufacturing.....	339.7	337.5	335.6	335.4	338.7	338.4	337.7	336.2	-1.5
Miscellaneous manufacturing.....	612.1	606.6	606.9	605.3	611.9	608.4	606.2	604.5	-1.7
Nondurable goods.....	4,844	4,859	4,857	4,841	4,845	4,844	4,842	4,841	-1
Food manufacturing.....	1,776.4	1,783.0	1,783.9	1,777.9	1,772.7	1,771.4	1,773.6	1,773.0	-0.6
Textile mills.....	86.8	85.7	85.0	84.2	86.4	85.4	84.7	84.1	-0.6
Textile product mills.....	99.2	97.4	97.7	97.7	99.5	97.9	97.9	98.0	0.1
Apparel manufacturing.....	83.8	81.9	80.9	80.1	83.6	82.0	80.5	79.3	-1.2
Paper manufacturing.....	355.7	356.3	356.6	356.2	354.6	356.3	356.7	355.7	-1.0
Printing and related support activities.....	355.3	347.4	346.1	345.3	354.1	347.7	344.7	343.3	-1.4
Petroleum and coal products manufacturing.....	107.0	109.2	107.9	106.9	108.3	107.7	106.4	106.6	0.2
Chemical manufacturing.....	895.6	904.0	905.4	902.6	899.3	905.9	907.5	906.7	-0.8
Plastics and rubber products manufacturing.....	718.1	710.8	710.7	711.4	718.6	713.8	713.1	715.1	2.0

See footnotes at end of table.

# ESTABLISHMENT DATA

## Table B-1. Employees on nonfarm payrolls by industry sector and selected industry detail

— Continued

[In thousands]

Industry	Not seasonally adjusted				Seasonally adjusted				
	Nov. 2024	Sept. 2025	Oct. 2025 <sup>P</sup>	Nov. 2025 <sup>P</sup>	Nov. 2024	Sept. 2025	Oct. 2025 <sup>P</sup>	Nov. 2025 <sup>P</sup>	Change from: Oct.2025 - Nov.2025 <sup>P</sup>
Nondurable goods - Continued									
Beverage, tobacco, and leather and allied product manufacturing.....	366.5	382.8	382.6	378.6	368.2	375.6	377.3	379.3	2.0
Private service-providing.....	114,149	114,362	114,923	115,143	113,426	114,400	114,461	114,511	50
Trade, transportation, and utilities.....	29,455	28,931	29,100	29,457	28,952	29,072	29,071	29,059	-12
Wholesale trade.....	6,171.5	6,158.9	6,178.4	6,173.7	6,165.7	6,165.9	6,168.2	6,166.0	-2.2
Merchant wholesalers, durable goods.....	3,455.5	3,452.4	3,458.8	3,455.3	3,453.7	3,458.0	3,455.6	3,454.9	-0.7
Merchant wholesalers, nondurable goods. . .	2,221.0	2,223.3	2,233.9	2,233.7	2,219.6	2,225.1	2,229.9	2,229.3	-0.6
Wholesale trade agents and brokers.....	495.0	483.2	485.7	484.7	492.4	482.8	482.7	481.8	-0.9
Retail trade.....	15,812.0	15,484.2	15,579.8	15,831.0	15,503.1	15,605.2	15,602.8	15,609.0	6.2
Motor vehicle and parts dealers.....	2,052.7	2,059.6	2,062.2	2,056.3	2,052.5	2,055.8	2,056.3	2,055.3	-1.0
Automobile dealers.....	1,294.0	1,298.7	1,303.3	1,297.7	1,293.2	1,297.9	1,298.3	1,296.0	-2.3
Other motor vehicle dealers.....	162.4	161.2	159.5	158.7	166.4	159.6	160.6	162.1	1.5
Automotive parts, accessories, and tire retailers.....	596.3	599.7	599.4	599.9	592.9	598.3	597.4	597.2	-0.2
Building material and garden equipment and supplies dealers.....	1,369.3	1,346.4	1,340.9	1,344.4	1,389.2	1,367.0	1,366.1	1,368.1	2.0
Food and beverage retailers.....	3,267.9	3,231.3	3,254.3	3,284.5	3,236.3	3,252.8	3,255.4	3,257.8	2.4
Furniture, home furnishings, electronics, and appliance retailers.....	830.8	784.6	794.7	827.3	806.2	793.3	791.2	796.8	5.6
Furniture and home furnishings retailers...	417.8	397.3	403.7	414.2	407.9	402.8	401.4	403.9	2.5
Electronics and appliance retailers.....	413.0	387.3	391.0	413.1	398.3	390.5	389.8	392.9	3.1
General merchandise retailers.....	3,402.4	3,289.9	3,315.3	3,402.6	3,265.0	3,315.5	3,313.5	3,306.5	-7.0
Department stores.....	1,081.5	982.4	1,001.6	1,067.0	1,015.0	1,004.9	1,004.3	1,004.6	0.3
Warehouse clubs, supercenters, and other general merchandise retailers. . .	2,320.9	2,307.5	2,313.7	2,335.6	2,250.1	2,310.6	2,309.2	2,301.9	-7.3
Health and personal care retailers.....	1,106.5	1,078.7	1,086.7	1,088.6	1,085.0	1,087.4	1,080.3	1,072.1	-8.2
Gasoline stations and fuel dealers.....	1,057.2	1,066.0	1,068.2	1,071.2	1,053.6	1,065.0	1,068.7	1,071.9	3.2
Clothing, clothing accessories, shoe, and jewelry retailers.....	1,186.9	1,117.7	1,133.1	1,194.8	1,116.6	1,147.6	1,146.8	1,155.7	8.9
Sporting goods, hobby, musical instrument, book, and miscellaneous retailers.....	1,538.3	1,510.0	1,524.4	1,561.3	1,498.7	1,520.8	1,524.5	1,524.8	0.3
Transportation and warehousing.....	6,877.5	6,692.2	6,744.9	6,852.2	6,688.8	6,702.6	6,702.1	6,684.4	-17.7
Air transportation.....	563.2	577.2	575.3	576.5	565.5	577.6	577.1	579.0	1.9
Rail transportation.....	154.8	151.3	150.9	150.9	155.6	151.5	151.1	150.8	-0.3
Water transportation.....	68.3	73.2	71.7	69.2	69.7	71.6	71.5	71.4	-0.1
Truck transportation.....	1,530.0	1,531.1	1,528.2	1,518.9	1,517.8	1,515.3	1,514.0	1,509.6	-4.4
Transit and ground passenger transportation.....	502.8	503.6	511.9	513.5	486.3	489.4	492.8	495.9	3.1
Pipeline transportation.....	55.9	60.7	60.8	61.0	55.8	60.8	61.2	61.4	0.2
Scenic and sightseeing transportation.....	26.4	41.1	36.2	29.9	29.9	35.6	35.1	34.7	-0.4
Support activities for transportation.....	848.1	844.0	847.3	850.0	843.9	845.7	847.3	845.6	-1.7
Couriers and messengers.....	1,234.2	1,095.0	1,126.0	1,234.6	1,119.9	1,136.8	1,137.5	1,119.6	-17.9
Warehousing and storage.....	1,893.8	1,815.0	1,836.6	1,847.7	1,844.4	1,818.3	1,814.5	1,816.4	1.9
Utilities.....	593.9	596.1	597.3	599.7	593.9	597.8	598.1	599.1	1.0
Information.....	2,938	2,924	2,928	2,921	2,927	2,924	2,919	2,915	-4
Motion picture and sound recording industries.....	406.8	390.4	394.2	395.5	399.4	396.8	390.0	392.0	2.0
Publishing industries.....	914.4	931.4	924.6	918.0	913.0	924.5	921.7	917.2	-4.5
Broadcasting and content providers.....	336.2	334.9	336.1	334.6	335.2	334.5	334.6	333.9	-0.7
Telecommunications.....	614.4	602.3	601.0	599.1	614.5	602.3	599.4	598.8	-0.6
Computing infrastructure providers, data processing, web hosting, and related services.....	480.2	478.4	485.0	485.7	480.0	479.6	486.4	486.2	-0.2
Web search portals, libraries, archives, and other information services.....	185.6	186.1	186.9	188.4	184.5	186.5	186.9	187.3	0.4
Financial activities.....	9,210	9,237	9,246	9,247	9,194	9,236	9,233	9,231	-2
Finance and insurance.....	6,730.0	6,736.9	6,747.9	6,751.0	6,719.0	6,744.9	6,745.5	6,739.7	-5.8
Monetary authorities-central bank.....	21.2	20.9	20.6	20.5	21.2	20.8	20.7	20.6	-0.1
Credit intermediation and related activities.....	2,555.7	2,554.2	2,551.0	2,556.5	2,558.4	2,559.5	2,557.6	2,558.3	0.7

See footnotes at end of table.



# ESTABLISHMENT DATA

## Table B-1. Employees on nonfarm payrolls by industry sector and selected industry detail

— Continued

[In thousands]

Industry	Not seasonally adjusted				Seasonally adjusted				Change from: Oct.2025 - Nov.2025 <sup>P</sup>
	Nov. 2024	Sept. 2025	Oct. 2025 <sup>P</sup>	Nov. 2025 <sup>P</sup>	Nov. 2024	Sept. 2025	Oct. 2025 <sup>P</sup>	Nov. 2025 <sup>P</sup>	
Credit intermediation and related - Continued									
Depository credit intermediation <sup>1</sup> .....	1,779.0	1,778.3	1,777.5	1,780.9	1,781.0	1,782.7	1,782.9	1,782.1	-0.8
Commercial banking.....	1,370.2	1,360.2	1,358.0	1,358.7	1,372.4	1,363.3	1,362.4	1,360.4	-2.0
Nondepository credit intermediation.....	506.8	499.1	499.3	500.6	506.4	500.2	499.1	500.2	1.1
Activities related to credit intermediation...	269.9	276.8	274.2	275.0	270.9	276.6	275.6	276.0	0.4
Securities, commodity contracts, funds, trusts, and other financial vehicles, investments, and related activities.....	1,126.8	1,151.4	1,155.8	1,158.5	1,122.6	1,152.7	1,151.8	1,154.6	2.8
Insurance carriers and related activities.....	3,026.3	3,010.4	3,020.5	3,015.5	3,016.8	3,011.9	3,015.4	3,006.2	-9.2
Real estate and rental and leasing.....	2,479.6	2,499.6	2,498.1	2,496.1	2,474.8	2,491.1	2,487.2	2,491.0	3.8
Real estate.....	1,880.1	1,875.5	1,885.6	1,887.7	1,871.5	1,876.2	1,875.7	1,878.9	3.2
Rental and leasing services.....	576.5	601.0	589.3	585.2	580.4	591.8	588.4	589.0	0.6
Lessors of nonfinancial intangible assets (except copyrighted works).....	23.0	23.1	23.2	23.2	22.9	23.1	23.1	23.1	0.0
Professional and business services.....	22,773	22,592	22,760	22,705	22,578	22,529	22,522	22,534	12
Professional, scientific, and technical services.....	10,874.6	10,773.3	10,876.4	10,889.5	10,846.5	10,860.3	10,858.9	10,870.4	11.5
Legal services.....	1,198.6	1,195.5	1,208.6	1,211.8	1,191.8	1,204.0	1,204.3	1,204.3	0.0
Accounting, tax preparation, bookkeeping, and payroll services.....	1,118.2	1,114.6	1,129.3	1,136.5	1,145.9	1,160.7	1,161.6	1,163.6	2.0
Architectural, engineering, and related services.....	1,724.3	1,752.0	1,759.9	1,760.7	1,721.3	1,753.2	1,754.9	1,760.3	5.4
Specialized design services.....	155.0	149.8	152.3	153.0	152.7	150.0	150.1	150.8	0.7
Computer systems design and related services.....	2,459.4	2,393.9	2,420.2	2,417.5	2,444.7	2,412.3	2,406.4	2,403.2	-3.2
Management, scientific, and technical consulting services.....	1,890.7	1,874.9	1,900.4	1,903.4	1,871.9	1,882.9	1,885.0	1,887.1	2.1
Scientific research and development services.....	940.4	919.4	918.8	919.0	940.2	922.3	918.8	919.5	0.7
Advertising, public relations, and related services.....	500.5	491.6	494.1	495.6	498.5	493.1	492.6	494.8	2.2
Other professional, scientific, and technical services.....	887.5	881.6	892.8	892.0	879.6	881.8	885.2	886.8	1.6
Management of companies and enterprises. ...	2,612.9	2,630.4	2,626.8	2,633.0	2,616.1	2,634.0	2,630.3	2,633.2	2.9
Administrative and support and waste management and remediation services. ....	9,285.1	9,187.8	9,256.4	9,182.0	9,115.3	9,034.7	9,033.2	9,030.6	-2.6
Administrative and support services.....	8,764.6	8,665.4	8,735.4	8,662.0	8,596.8	8,514.7	8,513.8	8,511.7	-2.1
Office administrative services.....	623.6	619.5	621.9	623.7	620.6	619.7	620.2	621.7	1.5
Facilities support services.....	183.6	187.3	190.0	185.5	184.6	186.0	187.2	186.5	-0.7
Employment services <sup>1</sup> .....	3,403.0	3,260.4	3,316.3	3,292.8	3,265.2	3,190.8	3,178.5	3,175.3	-3.2
Temporary help services.....	2,664.6	2,548.6	2,594.7	2,572.5	2,550.1	2,487.5	2,474.8	2,469.8	-5.0
Business support services.....	689.3	642.0	648.2	652.4	675.2	642.6	642.7	640.0	-2.7
Travel arrangement and reservation services.....	192.0	193.8	198.5	196.2	191.4	193.6	196.3	195.7	-0.6
Investigation and security services.....	1,035.2	1,042.8	1,046.2	1,043.2	1,029.5	1,037.2	1,037.2	1,035.2	-2.0
Services to buildings and dwellings.....	2,307.0	2,383.0	2,372.9	2,327.0	2,300.5	2,311.6	2,313.7	2,316.6	2.9
Other support services.....	330.9	336.6	341.4	341.2	329.9	333.2	338.0	340.7	2.7
Waste management and remediation services.....	520.5	522.4	521.0	520.0	518.5	520.0	519.4	518.9	-0.5
Private education and health services.....	27,127	27,445	27,756	27,882	26,848	27,499	27,558	27,623	65
Private educational services.....	4,162.8	3,979.4	4,121.7	4,145.5	3,984.8	3,993.3	3,988.1	3,988.9	0.8
Health care and social assistance.....	22,963.8	23,465.2	23,634.4	23,736.3	22,863.6	23,505.5	23,570.1	23,634.1	64.0
Health care <sup>3</sup> .....	17,981.0	18,238.9	18,355.6	18,435.3	17,900.8	18,258.8	18,302.6	18,348.9	46.3
Ambulatory health care services.....	8,967.2	9,015.0	9,114.3	9,153.2	8,915.3	9,039.7	9,071.0	9,095.0	24.0
Offices of physicians.....	3,021.9	3,065.5	3,098.2	3,105.8	3,003.6	3,076.1	3,082.4	3,087.9	5.5
Offices of dentists.....	1,054.9	1,048.1	1,064.4	1,071.0	1,052.2	1,053.3	1,060.2	1,064.5	4.3
Offices of other health practitioners.....	1,270.0	1,278.0	1,300.3	1,304.6	1,259.3	1,284.4	1,290.7	1,295.1	4.4
Outpatient care centers.....	1,126.6	1,122.2	1,126.2	1,128.5	1,121.1	1,123.0	1,123.8	1,123.7	-0.1
Medical and diagnostic laboratories. ...	305.2	310.8	313.1	314.3	305.1	311.4	312.8	313.5	0.7
Home health care services.....	1,826.2	1,825.9	1,845.7	1,859.8	1,813.3	1,827.3	1,836.0	1,843.7	7.7
Other ambulatory health care services.....	362.4	364.5	366.4	369.2	360.7	364.2	365.1	366.6	1.5
Hospitals.....	5,643.6	5,780.5	5,786.5	5,809.4	5,625.7	5,773.0	5,776.3	5,787.7	11.4

See footnotes at end of table.

# ESTABLISHMENT DATA

## Table B-1. Employees on nonfarm payrolls by industry sector and selected industry detail

— Continued

[In thousands]

Industry	Not seasonally adjusted				Seasonally adjusted				
	Nov. 2024	Sept. 2025	Oct. 2025 <sup>p</sup>	Nov. 2025 <sup>p</sup>	Nov. 2024	Sept. 2025	Oct. 2025 <sup>p</sup>	Nov. 2025 <sup>p</sup>	Change from: Oct.2025 - Nov.2025 <sup>p</sup>
Health care - Continued									
Nursing and residential care facilities. . . .	3,370.2	3,443.4	3,454.8	3,472.7	3,359.8	3,446.1	3,455.3	3,466.2	10.9
Skilled nursing care facilities. . . . .	1,515.2	1,557.8	1,562.1	1,572.2	1,508.5	1,555.7	1,560.1	1,568.5	8.4
Residential intellectual and developmental disability, mental health, and substance abuse facilities. . . . .	682.5	702.1	705.7	709.8	681.4	703.7	706.1	708.3	2.2
Continuing care retirement communities and assisted living facilities for the elderly. . . . .	1,003.4	1,008.5	1,012.1	1,016.0	1,000.9	1,012.0	1,014.3	1,014.8	0.5
Other residential care facilities. . . . .	169.1	175.0	174.9	174.7	168.9	174.7	174.8	174.6	-0.2
Social assistance. . . . .	4,982.8	5,226.3	5,278.8	5,301.0	4,962.8	5,246.7	5,267.5	5,285.2	17.7
Individual and family services. . . . .	3,360.6	3,608.9	3,644.3	3,659.2	3,349.3	3,619.6	3,637.8	3,650.6	12.8
Community food and housing, and emergency and other relief services. . . .	235.6	237.7	240.5	242.6	234.8	240.0	241.4	242.4	1.0
Vocational rehabilitation services. . . . .	284.9	280.1	280.9	284.1	284.3	281.5	282.0	284.0	2.0
Child care services. . . . .	1,101.7	1,099.6	1,113.1	1,115.1	1,094.4	1,105.6	1,106.3	1,108.2	1.9
Leisure and hospitality. . . . .	16,655	17,197	17,081	16,886	16,932	17,090	17,106	17,094	-12
Arts, entertainment, and recreation. . . . .	2,513.0	2,760.3	2,675.1	2,564.6	2,662.2	2,722.3	2,699.4	2,685.2	-14.2
Performing arts, spectator sports, and related industries. . . . .	602.4	664.3	656.9	636.2	610.3	643.4	641.3	641.3	0.0
Museums, historical sites, and similar institutions. . . . .	178.6	185.5	186.1	183.8	180.9	184.4	185.2	186.2	1.0
Amusement, gambling, and recreation industries. . . . .	1,732.0	1,910.5	1,832.1	1,744.6	1,871.0	1,894.5	1,872.9	1,857.7	-15.2
Accommodation and food services. . . . .	14,141.5	14,436.3	14,405.4	14,321.0	14,270.0	14,367.9	14,406.6	14,409.0	2.4
Accommodation. . . . .	1,888.7	1,973.0	1,918.5	1,871.1	1,943.3	1,938.2	1,930.9	1,927.7	-3.2
Food services and drinking places. . . . .	12,252.8	12,463.3	12,486.9	12,449.9	12,326.7	12,429.7	12,475.7	12,481.3	5.6
Other services. . . . .	5,991	6,036	6,052	6,045	5,995	6,050	6,052	6,055	3
Repair and maintenance. . . . .	1,471.1	1,486.9	1,487.9	1,478.6	1,471.0	1,488.9	1,482.1	1,478.9	-3.2
Personal and laundry services. . . . .	1,609.6	1,627.1	1,632.8	1,631.8	1,605.4	1,627.8	1,629.5	1,633.3	3.8
Religious, grantmaking, civic, professional, and similar organizations. . . . .	2,910.5	2,922.0	2,930.8	2,934.3	2,918.6	2,933.5	2,940.5	2,942.9	2.4
Government. . . . .	23,989	23,587	23,701	23,810	23,524	23,566	23,409	23,404	-5
Federal. . . . .	3,014	2,908	2,746	2,743	3,009	2,912	2,750	2,744	-6
Federal, except U.S. Postal Service. . . . .	2,410.0	2,319.0	2,157.9	2,148.6	2,406.4	2,319.0	2,157.7	2,151.0	-6.7
U.S. Postal Service. . . . .	603.6	589.3	588.5	594.5	602.2	593.1	591.9	592.5	0.6
State government. . . . .	5,683	5,561	5,625	5,645	5,493	5,486	5,474	5,477	3
State government education. . . . .	2,810.7	2,663.3	2,736.7	2,759.1	2,617.3	2,593.5	2,585.1	2,584.3	-0.8
State government, excluding education. . . . .	2,872.6	2,897.4	2,888.2	2,886.0	2,876.1	2,892.8	2,888.9	2,892.9	4.0
Local government. . . . .	15,292	15,118	15,330	15,422	15,022	15,168	15,185	15,183	-2
Local government education. . . . .	8,470.4	8,221.4	8,464.4	8,553.0	8,180.7	8,256.0	8,262.1	8,264.9	2.8
Local government, excluding education. . . . .	6,821.2	6,896.8	6,865.1	6,868.5	6,840.8	6,912.1	6,922.9	6,917.6	-5.3

<sup>1</sup> Includes other industries, not shown separately.

<sup>2</sup> Includes motor vehicle manufacturing, motor vehicle body and trailer manufacturing, and motor vehicle parts manufacturing.

<sup>3</sup> Includes ambulatory health care services, hospitals, and nursing and residential care facilities.

p Preliminary

NOTE: Data have been revised to reflect March 2024 benchmark levels and updated seasonal adjustment factors.

# ESTABLISHMENT DATA

**Table B-2. Average weekly hours and overtime of all employees on private nonfarm payrolls by industry sector, seasonally adjusted**

Industry	Nov. 2024	Sept. 2025	Oct. 2025 <sup>p</sup>	Nov. 2025 <sup>p</sup>
<b>AVERAGE WEEKLY HOURS</b>				
Total private.....	34.3	34.2	34.2	34.3
Goods-producing.....	39.7	39.7	39.6	39.8
Mining and logging.....	44.1	45.4	45.1	45.0
Construction.....	38.9	39.0	38.8	39.1
Manufacturing.....	40.1	40.0	39.9	40.0
Durable goods.....	40.5	40.4	40.4	40.5
Nondurable goods.....	39.3	39.2	39.2	39.2
Private service-providing.....	33.2	33.2	33.2	33.2
Trade, transportation, and utilities.....	33.8	34.1	34.1	34.1
Wholesale trade.....	39.2	39.3	39.3	39.3
Retail trade.....	29.7	29.9	29.9	29.9
Transportation and warehousing.....	37.6	38.2	38.2	38.2
Utilities.....	41.6	41.9	42.2	42.1
Information.....	36.7	37.4	37.2	37.4
Financial activities.....	37.5	37.5	37.5	37.5
Professional and business services.....	36.5	36.5	36.5	36.5
Private education and health services.....	33.0	32.7	32.7	32.8
Leisure and hospitality.....	25.6	25.5	25.6	25.6
Other services.....	32.1	32.0	32.1	32.1
<b>AVERAGE OVERTIME HOURS</b>				
Manufacturing.....	2.9	2.9	2.9	2.9
Durable goods.....	2.9	2.9	2.9	2.9
Nondurable goods.....	2.8	3.0	3.0	3.0

p Preliminary

NOTE: Data have been revised to reflect March 2024 benchmark levels and updated seasonal adjustment factors.

# ESTABLISHMENT DATA

**Table B-3. Average hourly and weekly earnings of all employees on private nonfarm payrolls by industry sector, seasonally adjusted**

Industry	Average hourly earnings				Average weekly earnings			
	Nov. 2024	Sept. 2025	Oct. 2025 <sup>p</sup>	Nov. 2025 <sup>p</sup>	Nov. 2024	Sept. 2025	Oct. 2025 <sup>p</sup>	Nov. 2025 <sup>p</sup>
Total private.....	\$35.61	\$36.65	\$36.81	\$36.86	\$1,221.42	\$1,253.43	\$1,258.90	\$1,264.30
Goods-producing.....	36.26	37.45	37.62	37.70	1,439.52	1,486.77	1,489.75	1,500.46
Mining and logging.....	40.06	40.36	40.68	40.36	1,766.65	1,832.34	1,834.67	1,816.20
Construction.....	38.78	40.00	40.09	40.18	1,508.54	1,560.00	1,555.49	1,571.04
Manufacturing.....	34.47	35.67	35.88	35.97	1,382.25	1,426.80	1,431.61	1,438.80
Durable goods.....	36.54	37.90	38.04	38.16	1,479.87	1,531.16	1,536.82	1,545.48
Nondurable goods.....	30.98	31.94	32.27	32.30	1,217.51	1,252.05	1,264.98	1,266.16
Private service-providing.....	35.46	36.47	36.62	36.67	1,177.27	1,210.80	1,215.78	1,217.44
Trade, transportation, and utilities.....	30.39	31.22	31.37	31.48	1,027.18	1,064.60	1,069.72	1,073.47
Wholesale trade.....	37.97	39.13	39.22	39.28	1,488.42	1,537.81	1,541.35	1,543.70
Retail trade.....	24.93	25.62	25.75	25.87	740.42	766.04	769.93	773.51
Transportation and warehousing.....	30.97	31.81	31.97	32.13	1,164.47	1,215.14	1,221.25	1,227.37
Utilities.....	52.03	53.11	53.58	53.87	2,164.45	2,225.31	2,261.08	2,267.93
Information.....	51.40	52.88	53.48	53.36	1,886.38	1,977.71	1,989.46	1,995.66
Financial activities.....	46.17	47.92	48.14	48.23	1,731.38	1,797.00	1,805.25	1,808.63
Professional and business services.....	43.16	44.72	44.83	44.93	1,575.34	1,632.28	1,636.30	1,639.95
Private education and health services.....	34.93	35.55	35.82	35.72	1,152.69	1,162.49	1,171.31	1,171.62
Leisure and hospitality.....	22.33	23.01	23.06	23.14	571.65	586.76	590.34	592.38
Other services.....	32.29	32.98	33.06	33.16	1,036.51	1,055.36	1,061.23	1,064.44

p Preliminary

NOTE: Data have been revised to reflect March 2024 benchmark levels and updated seasonal adjustment factors.

# ESTABLISHMENT DATA

**Table B-4. Indexes of aggregate weekly hours and payrolls for all employees on private nonfarm payrolls by industry sector, seasonally adjusted**

[2007=100]

Industry	Index of aggregate weekly hours <sup>1</sup>					Index of aggregate weekly payrolls <sup>2</sup>				
	Nov. 2024	Sept. 2025	Oct. 2025 <sup>p</sup>	Nov. 2025 <sup>p</sup>	Percent change from: Oct. 2025 - Nov. 2025 <sup>p</sup>	Nov. 2024	Sept. 2025	Oct. 2025 <sup>p</sup>	Nov. 2025 <sup>p</sup>	Percent change from: Oct. 2025 - Nov. 2025 <sup>p</sup>
Total private.....	116.3	116.8	116.8	117.2	0.3	198.0	204.6	205.6	206.6	0.5
Goods-producing.....	98.0	97.8	97.6	98.1	0.5	160.7	165.6	165.9	167.2	0.8
Mining and logging.....	86.6	87.2	86.7	86.0	-0.8	139.3	141.2	141.7	139.3	-1.7
Construction.....	110.9	111.7	111.1	112.3	1.1	186.9	194.0	193.5	196.1	1.3
Manufacturing.....	92.2	91.5	91.2	91.4	0.2	147.8	151.8	152.2	152.9	0.5
Durable goods.....	90.4	89.5	89.4	89.6	0.2	146.7	150.7	151.1	151.9	0.5
Nondurable goods.....	95.0	94.8	94.7	94.7	0.0	149.4	153.6	155.1	155.2	0.1
Private service-providing.....	121.2	122.3	122.3	122.4	0.1	208.9	216.7	217.7	218.1	0.2
Trade, transportation, and utilities.....	106.9	108.3	108.3	108.3	0.0	175.2	182.4	183.2	183.8	0.3
Wholesale trade.....	106.6	106.9	106.9	106.9	0.0	169.3	175.0	175.4	175.6	0.1
Retail trade.....	93.7	95.0	94.9	95.0	0.1	154.5	160.9	161.7	162.5	0.5
Transportation and warehousing.....	144.5	147.1	147.1	146.7	-0.3	227.7	238.1	239.3	239.8	0.2
Utilities.....	106.9	108.4	109.2	109.2	0.0	183.8	190.2	193.4	194.3	0.5
Information.....	98.1	99.9	99.2	99.6	0.4	179.6	188.1	188.9	189.2	0.2
Financial activities.....	112.9	113.5	113.4	113.4	0.0	203.4	212.1	213.0	213.3	0.1
Professional and business services.....	128.9	128.6	128.6	128.6	0.0	225.3	232.9	233.4	234.1	0.3
Private education and health services..	144.7	146.9	147.2	148.0	0.5	243.2	251.2	253.6	254.3	0.3
Leisure and hospitality.....	123.7	124.3	124.9	124.9	0.0	222.8	230.8	232.5	233.1	0.3
Other services.....	111.0	111.6	112.0	112.1	0.1	196.4	201.8	203.0	203.7	0.3

<sup>1</sup> The indexes of aggregate weekly hours are calculated by dividing the current month's estimates of aggregate hours by the corresponding 2007 annual average aggregate hours. Aggregate hours estimates are the product of estimates of average weekly hours and employment.

<sup>2</sup> The indexes of aggregate weekly payrolls are calculated by dividing the current month's estimates of aggregate weekly payrolls by the corresponding 2007 annual average aggregate weekly payrolls. Aggregate payrolls estimates are the product of estimates of average hourly earnings, average weekly hours, and employment.

p Preliminary

NOTE: Data have been revised to reflect March 2024 benchmark levels and updated seasonal adjustment factors.

# ESTABLISHMENT DATA

## Table B-5. Employment of women on nonfarm payrolls by industry sector, seasonally adjusted

Industry	Women employees (in thousands)				Percent of all employees			
	Nov. 2024	Sept. 2025	Oct. 2025 <sup>p</sup>	Nov. 2025 <sup>p</sup>	Nov. 2024	Sept. 2025	Oct. 2025 <sup>p</sup>	Nov. 2025 <sup>p</sup>
Total nonfarm.....	79,079	79,673	79,614	79,638	49.9	49.9	49.9	49.9
Total private.....	65,340	65,870	65,884	65,907	48.4	48.4	48.4	48.4
Goods-producing.....	4,950	4,926	4,921	4,926	22.8	22.8	22.8	22.8
Mining and logging.....	86	85	85	85	13.8	13.9	13.9	14.0
Construction.....	1,179	1,198	1,200	1,205	14.2	14.4	14.5	14.5
Manufacturing.....	3,685	3,643	3,636	3,636	28.9	28.7	28.6	28.6
Durable goods.....	1,935	1,909	1,905	1,904	24.4	24.3	24.2	24.2
Nondurable goods.....	1,750	1,734	1,731	1,732	36.1	35.8	35.7	35.8
Private service-providing.....	60,390	60,944	60,963	60,981	53.2	53.3	53.3	53.3
Trade, transportation, and utilities.....	11,222	11,260	11,238	11,218	38.8	38.7	38.7	38.6
Wholesale trade.....	1,881.2	1,875.4	1,872.3	1,869.1	30.5	30.4	30.4	30.3
Retail trade.....	7,426.1	7,479.8	7,468.1	7,468.1	47.9	47.9	47.9	47.8
Transportation and warehousing.....	1,759.8	1,749.7	1,742.8	1,725.9	26.3	26.1	26.0	25.8
Utilities.....	155.1	154.6	154.8	154.8	26.1	25.9	25.9	25.8
Information.....	1,166	1,173	1,179	1,172	39.8	40.1	40.4	40.2
Financial activities.....	5,082	5,059	5,057	5,058	55.3	54.8	54.8	54.8
Professional and business services.....	10,306	10,185	10,177	10,180	45.6	45.2	45.2	45.2
Private education and health services.....	20,575	21,065	21,095	21,133	76.6	76.6	76.5	76.5
Leisure and hospitality.....	8,817	8,935	8,953	8,951	52.1	52.3	52.3	52.4
Other services.....	3,222	3,267	3,264	3,269	53.7	54.0	53.9	54.0
Government.....	13,739	13,803	13,730	13,731	58.4	58.6	58.7	58.7

p Preliminary

NOTE: Data have been revised to reflect March 2024 benchmark levels and updated seasonal adjustment factors.

# ESTABLISHMENT DATA

**Table B-6. Employment of production and nonsupervisory employees on private nonfarm payrolls by industry sector, seasonally adjusted<sup>1</sup>**

[In thousands]

Industry	Nov. 2024	Sept. 2025	Oct. 2025 <sup>p</sup>	Nov. 2025 <sup>p</sup>
Total private.....	109,960	110,927	110,927	111,053
Goods-producing.....	15,386	15,359	15,348	15,357
Mining and logging.....	474	453	455	453
Construction.....	6,009	6,031	6,032	6,047
Manufacturing.....	8,903	8,875	8,861	8,857
Durable goods.....	5,374	5,347	5,333	5,333
Nondurable goods.....	3,529	3,528	3,528	3,524
Private service-providing.....	94,574	95,568	95,579	95,696
Trade, transportation, and utilities.....	24,511	24,667	24,641	24,642
Wholesale trade.....	4,875.7	4,881.3	4,872.7	4,870.1
Retail trade.....	13,310.7	13,430.3	13,426.9	13,442.2
Transportation and warehousing.....	5,853.4	5,882.2	5,867.7	5,855.7
Utilities.....	471.4	473.5	473.8	474.3
Information.....	2,352	2,334	2,326	2,324
Financial activities.....	6,939	7,003	6,999	6,996
Professional and business services.....	17,701	17,691	17,683	17,723
Private education and health services.....	23,468	24,123	24,177	24,237
Leisure and hospitality.....	14,739	14,842	14,855	14,865
Other services.....	4,864	4,908	4,898	4,909

<sup>1</sup> Data relate to production employees in mining and logging and manufacturing, construction employees in construction, and nonsupervisory employees in the service-providing industries. These groups account for approximately four-fifths of the total employment on private nonfarm payrolls.

<sup>p</sup> Preliminary

NOTE: Data have been revised to reflect March 2024 benchmark levels and updated seasonal adjustment factors.

# ESTABLISHMENT DATA

**Table B-7. Average weekly hours and overtime of production and nonsupervisory employees on private nonfarm payrolls by industry sector, seasonally adjusted<sup>1</sup>**

Industry	Nov. 2024	Sept. 2025	Oct. 2025 <sup>p</sup>	Nov. 2025 <sup>p</sup>
<b>AVERAGE WEEKLY HOURS</b>				
Total private.....	33.6	33.7	33.7	33.7
Goods-producing.....	40.5	40.7	40.6	40.8
Mining and logging.....	46.4	45.5	45.2	45.5
Construction.....	39.6	39.9	39.6	39.9
Manufacturing.....	40.7	41.0	41.1	41.2
Durable goods.....	40.9	41.2	41.4	41.4
Nondurable goods.....	40.4	40.7	40.7	40.9
Private service-providing.....	32.5	32.6	32.6	32.6
Trade, transportation, and utilities.....	33.9	34.3	34.1	34.2
Wholesale trade.....	39.0	39.3	39.3	39.4
Retail trade.....	30.3	30.6	30.4	30.5
Transportation and warehousing.....	37.3	37.9	37.7	37.7
Utilities.....	42.6	42.4	42.8	42.8
Information.....	35.7	36.0	36.1	35.8
Financial activities.....	37.3	37.4	37.5	37.4
Professional and business services.....	36.3	36.6	36.6	36.6
Private education and health services.....	32.1	31.7	31.7	31.7
Leisure and hospitality.....	24.1	24.1	24.2	24.1
Other services.....	31.2	31.2	31.4	31.3
<b>AVERAGE OVERTIME HOURS</b>				
Manufacturing.....	3.6	3.8	3.8	3.9
Durable goods.....	3.5	3.8	3.8	3.9
Nondurable goods.....	3.7	3.9	3.8	3.8

<sup>1</sup> Data relate to production employees in mining and logging and manufacturing, construction employees in construction, and nonsupervisory employees in the service-providing industries. These groups account for approximately four-fifths of the total employment on private nonfarm payrolls.

p Preliminary

NOTE: Data have been revised to reflect March 2024 benchmark levels and updated seasonal adjustment factors.



# ESTABLISHMENT DATA

**Table B-8. Average hourly and weekly earnings of production and nonsupervisory employees on private nonfarm payrolls by industry sector, seasonally adjusted<sup>1</sup>**

Industry	Average hourly earnings				Average weekly earnings			
	Nov. 2024	Sept. 2025	Oct. 2025 <sup>p</sup>	Nov. 2025 <sup>p</sup>	Nov. 2024	Sept. 2025	Oct. 2025 <sup>p</sup>	Nov. 2025 <sup>p</sup>
Total private.....	\$30.58	\$31.52	\$31.65	\$31.76	\$1,027.49	\$1,062.22	\$1,066.61	\$1,070.31
Goods-producing.....	31.59	32.71	32.82	32.96	1,279.40	1,331.30	1,332.49	1,344.77
Mining and logging.....	36.57	37.43	37.65	37.62	1,696.85	1,703.07	1,701.78	1,711.71
Construction.....	36.26	37.61	37.67	37.83	1,435.90	1,500.64	1,491.73	1,509.42
Manufacturing.....	28.22	29.21	29.36	29.48	1,148.55	1,197.61	1,206.70	1,214.58
Durable goods.....	29.75	30.99	31.16	31.39	1,216.78	1,276.79	1,290.02	1,299.55
Nondurable goods.....	25.86	26.47	26.59	26.55	1,044.74	1,077.33	1,082.21	1,085.90
Private service-providing.....	30.38	31.29	31.42	31.52	987.35	1,020.05	1,024.29	1,027.55
Trade, transportation, and utilities.....	26.29	27.04	27.18	27.34	891.23	927.47	926.84	935.03
Wholesale trade.....	31.67	32.65	32.68	32.70	1,235.13	1,283.15	1,284.32	1,288.38
Retail trade.....	21.12	21.77	21.85	21.94	639.94	666.16	664.24	669.17
Transportation and warehousing.....	29.37	30.17	30.46	30.90	1,095.50	1,143.44	1,148.34	1,164.93
Utilities.....	45.82	46.60	46.72	46.82	1,951.93	1,975.84	1,999.62	2,003.90
Information.....	41.75	43.67	43.83	44.00	1,490.48	1,572.12	1,582.26	1,575.20
Financial activities.....	36.15	37.72	37.90	38.13	1,348.40	1,410.73	1,421.25	1,426.06
Professional and business services.....	36.39	37.43	37.57	37.70	1,320.96	1,369.94	1,375.06	1,379.82
Private education and health services.....	31.98	32.84	32.99	32.94	1,026.56	1,041.03	1,045.78	1,044.20
Leisure and hospitality.....	19.78	20.37	20.47	20.53	476.70	490.92	495.37	494.77
Other services.....	28.11	28.70	28.72	28.83	877.03	895.44	901.81	902.38

<sup>1</sup> Data relate to production employees in mining and logging and manufacturing, construction employees in construction, and nonsupervisory employees in the service-providing industries. These groups account for approximately four-fifths of the total employment on private nonfarm payrolls.

p Preliminary

NOTE: Data have been revised to reflect March 2024 benchmark levels and updated seasonal adjustment factors.

# ESTABLISHMENT DATA

**Table B-9. Indexes of aggregate weekly hours and payrolls for production and nonsupervisory employees on private nonfarm payrolls by industry sector, seasonally adjusted<sup>1</sup>**

[2002=100]

Industry	Index of aggregate weekly hours <sup>2</sup>					Index of aggregate weekly payrolls <sup>3</sup>				
	Nov. 2024	Sept. 2025	Oct. 2025 <sup>p</sup>	Nov. 2025 <sup>p</sup>	Percent change from: Oct. 2025 - Nov. 2025 <sup>p</sup>	Nov. 2024	Sept. 2025	Oct. 2025 <sup>p</sup>	Nov. 2025 <sup>p</sup>	Percent change from: Oct. 2025 - Nov. 2025 <sup>p</sup>
Total private.....	123.1	124.6	124.6	124.7	0.1	251.6	262.4	263.5	264.7	0.5
Goods-producing.....	95.2	95.5	95.2	95.7	0.5	184.2	191.3	191.4	193.2	0.9
Mining and logging.....	116.9	109.5	109.3	109.5	0.2	248.6	238.4	239.3	239.7	0.2
Construction.....	119.1	120.5	119.6	120.8	1.0	233.3	244.7	243.3	246.8	1.4
Manufacturing.....	83.2	83.5	83.6	83.8	0.2	153.5	159.6	160.5	161.5	0.6
Durable goods.....	82.6	82.8	82.9	82.9	0.0	153.4	160.1	161.4	162.5	0.7
Nondurable goods.....	84.0	84.6	84.6	84.9	0.4	153.5	158.2	159.0	159.3	0.2
Private service-providing.....	131.0	132.7	132.8	132.9	0.1	272.9	284.9	286.1	287.4	0.5
Trade, transportation, and utilities.....	116.3	118.4	117.6	118.0	0.3	218.5	228.9	228.5	230.5	0.9
Wholesale trade.....	112.9	113.9	113.7	113.9	0.2	210.9	219.4	219.2	219.8	0.3
Retail trade.....	102.3	104.2	103.5	104.0	0.5	185.2	194.5	193.9	195.6	0.9
Transportation and warehousing.....	165.2	168.7	167.4	167.1	-0.2	308.9	324.0	324.6	328.6	1.2
Utilities.....	102.7	102.6	103.7	103.8	0.1	196.4	199.6	202.2	202.8	0.3
Information.....	95.8	95.9	95.8	95.0	-0.8	198.1	207.3	208.0	206.9	-0.5
Financial activities.....	121.8	123.3	123.5	123.1	-0.3	270.9	286.1	288.0	288.9	0.3
Professional and business services.....	143.4	144.5	144.5	144.8	0.2	310.5	321.8	322.8	324.7	0.6
Private education and health services..	160.6	163.0	163.4	163.8	0.2	339.0	353.4	355.8	356.2	0.1
Leisure and hospitality.....	130.1	131.0	131.7	131.2	-0.4	292.3	303.1	306.1	305.9	-0.1
Other services.....	106.4	107.4	107.9	107.8	-0.1	218.0	224.6	225.7	226.4	0.3

<sup>1</sup> Data relate to production employees in mining and logging and manufacturing, construction employees in construction, and nonsupervisory employees in the service-providing industries. These groups account for approximately four-fifths of the total employment on private nonfarm payrolls.

<sup>2</sup> The indexes of aggregate weekly hours are calculated by dividing the current month's estimates of aggregate hours by the corresponding 2002 annual average aggregate hours. Aggregate hours estimates are the product of estimates of average weekly hours and employment.

<sup>3</sup> The indexes of aggregate weekly payrolls are calculated by dividing the current month's estimates of aggregate weekly payrolls by the corresponding 2002 annual average aggregate weekly payrolls. Aggregate payrolls estimates are the product of estimates of average hourly earnings, average weekly hours, and employment.

p Preliminary

NOTE: Data have been revised to reflect March 2024 benchmark levels and updated seasonal adjustment factors.

**CONTACT:** Bureau of Workforce Statistics  
and Economic Research  
(850) 245-7205

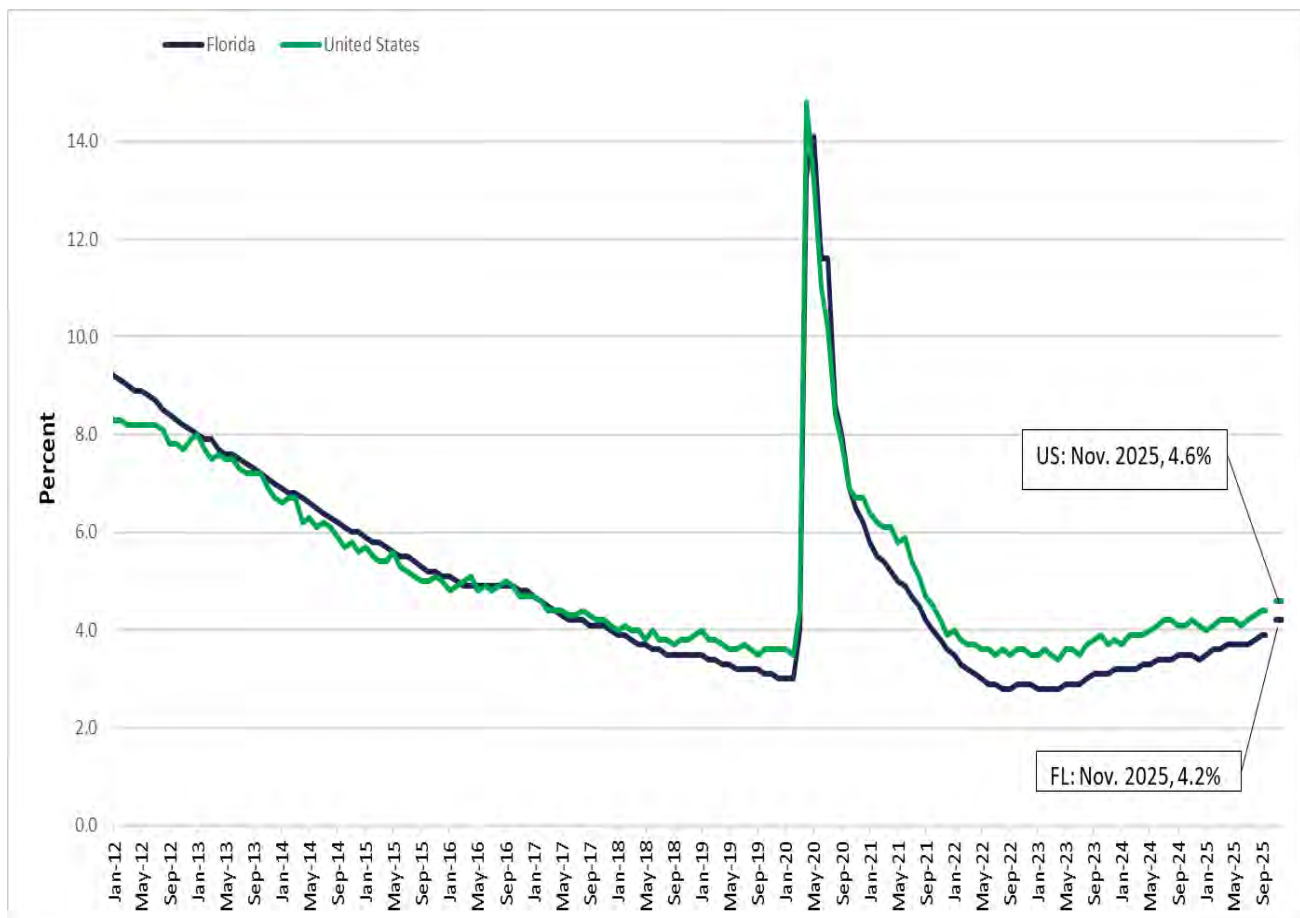
### Florida's November Figures Released

*Note: Unemployment and labor force statistics for October 2025 are not available due to a lapse in federal data collection activities.*

Florida's seasonally adjusted unemployment rate was 4.2 percent in November 2025, up 0.3 percentage point from the September 2025 rate, and up 0.7 percentage point from a year ago. There were 466,000 jobless Floridians out of a labor force of 11,209,000. The U.S. seasonally adjusted unemployment rate was 4.6 percent in November.

Florida's seasonally adjusted total nonagricultural employment was 10,047,900 in November 2025, a decrease of 300 jobs (less than -0.1 percent) over the month. The state gained 75,300 jobs over the year, an increase of 0.8 percent. Nationally, the number of jobs rose 0.6 percent over the year.

### United States and Florida Unemployment Rates (seasonally adjusted)



Source: U.S. Department of Labor, Bureau of Labor Statistics, Local Area Unemployment Statistics Program, in cooperation with the Florida Department of Commerce, Bureau of Workforce Statistics and Economic Research.

## Florida's Nonagricultural Employment by Industry (Seasonally Adjusted)

- Seven of ten major industries experienced positive over-the-year job growth in November.
- The industries gaining jobs over the year included education and health services (+49,000 jobs, +3.2 percent); trade, transportation, and utilities (+18,300 jobs, +0.9 percent); total government (+5,200 jobs, +0.4 percent); information (+4,400 jobs, +2.8 percent); financial activities (+2,900 jobs, +0.4 percent); professional and business services (+2,100 jobs, +0.1 percent); and other services (+400 jobs, +0.1 percent).
- The industries losing jobs over the year included construction (-4,600 jobs, -0.7 percent); manufacturing (-1,700 jobs, -0.4 percent); and leisure and hospitality (-700 jobs, -0.1 percent).

## Local Area Unemployment Statistics (Not Seasonally Adjusted)

- In November 2025, Miami-Dade County had the state's lowest unemployment rate (3.2 percent), followed by Monroe County (3.6 percent), and Wakulla County (4.5 percent).
- Taylor County had the highest unemployment rate (9.4 percent) in Florida in November 2025, followed by Sumter County (8.9 percent), and Citrus County (7.5 percent).

## Area Nonagricultural Employment (Not Seasonally Adjusted)

- In November 2025, 17 of all 25 metro areas in Florida had over-the-year job gains. The areas with the largest gains were the Tampa MD (+15,000 jobs, +1.4 percent), followed by the Jacksonville MSA (+10,500 jobs, +1.3 percent), and the West Palm Beach-Boca Raton-Delray Beach MD (+9,600 jobs, +1.4 percent).
- Six metro areas in Florida lost jobs over the year in November 2025. The areas losing jobs were the Tallahassee MSA (-1,600 jobs, -0.8 percent), the Panama City-Panama City Beach MSA (-1,400 jobs, -1.5 percent), the Crestview-Fort Walton Beach-Destin MSA (-1,000 jobs, -0.8 percent), the Pensacola-Ferry Pass-Brent MSA (-500 jobs, -0.2 percent), the Sebring MSA (-300 jobs, -1.0 percent), and the Sebastian-Vero Beach MSA (-100 jobs, -0.2 percent).
- The Homosassa Springs MSA and the Wildwood-The Villages MSA were unchanged in jobs over the year.

The unemployment and job growth rates are estimates, which are primarily based on surveys created and mandated by the U.S. Bureau of Labor Statistics in cooperation with the Florida Department of Commerce.

The unemployment rate is derived from Florida household surveys conducted by the U.S. Census Bureau under contract with the U.S. Bureau of Labor Statistics. The job growth rate is derived from Florida employer surveys conducted by the U.S. Bureau of Labor Statistics.

Both estimates are revised on a monthly basis. In addition, these estimates are benchmarked (revised) annually based on actual counts from Florida's Reemployment Assistance tax records and other data.

Procedures mandated by the U.S. Bureau of Labor Statistics may result in more variable month-to-month changes. For further information, go to: <https://www.bls.gov/sae/>

The mission of the Florida Department of Commerce is to promote economic prosperity for all Floridians and businesses through successful workforce, community, and economic development strategies. Please visit [www.floridajobs.org](http://www.floridajobs.org) for more information.

*Labor market data for December 2025 will be released on January 23, 2026, at 10:00 A.M.*

LABOR FORCE STATUS OF THE CIVILIAN NONINSTITUTIONAL POPULATION  
RELEASE DATE: JANUARY 07, 2026

**SEASONALLY ADJUSTED**

	Current Month November 2025	Month Ago October 2025	Year Ago November 2024	Over-the-Month Change		Over-the-Year Change	
				Level	Percent	Level	Percent
				STATE OF FLORIDA			
Civilian Noninstitutional							
Population 16+	19,482,000	-	19,210,000	-	-	272,000	1.4
Civilian Labor Force	11,209,000	-	11,169,000	-	-	40,000	0.4
Employment	10,743,000	-	10,783,000	-	-	-40,000	-0.4
Unemployment	466,000	-	386,000	-	-	80,000	20.7
Unemployment Rate (%)	4.2	-	3.5	-	-	0.7	-

**UNITED STATES**

Civilian Noninstitutional Population 16+	274,633,000	-	269,463,000	-	-	5,170,000	1.9
Civilian Labor Force	171,571,000	-	168,304,000	-	-	3,267,000	1.9
Employment	163,741,000	-	161,183,000	-	-	2,558,000	1.6
Unemployment	7,831,000	-	7,121,000	-	-	710,000	10.0
Unemployment Rate (%)	4.6	-	4.2	-	-	0.4	--

**NOT SEASONALLY ADJUSTED**

	Current Month November 2025	Month Ago October 2025	Year Ago November 2024	Over-the-Month Change		Over-the-Year Change	
				Level	Percent	Level	Percent
				STATE OF FLORIDA			
Civilian Noninstitutional							
Population 16+	19,482,000	-	19,210,000	-	-	272,000	1.4
Civilian Labor Force	11,223,000	-	11,121,000	-	-	102,000	0.9
Employment	10,667,000	-	10,732,000	-	-	-65,000	-0.6
Unemployment	555,000	-	389,000	-	-	166,000	42.7
Unemployment Rate (%)	4.9	-	3.5	-	-	1.4	--

**UNITED STATES**

Civilian Noninstitutional Population 16+	274,633,000	-	269,463,000	-	-	5,170,000	1.9
Civilian Labor Force	171,467,000	-	168,164,000	-	-	3,303,000	2.0
Employment	164,066,000	-	161,456,000	-	-	2,610,000	1.6
Unemployment	7,401,000	-	6,708,000	-	-	693,000	10.3
Unemployment Rate (%)	4.3	-	4.0	-	-	0.3	--

*Note: Unemployment and labor force statistics for October 2025 are not available due to a lapse in federal data collection activities.*

Note: All estimates except unemployment rates are rounded to the nearest thousand. Items may not add to totals or compute to displayed percentages due to rounding. All data are subject to revision.

Source: U.S. Department of Labor, Bureau of Labor Statistics, Local Area Unemployment Statistics Program, in cooperation with the Florida Department of Commerce, Bureau of Workforce Statistics and Economic Research.

**Nonagricultural Employment in Florida  
Seasonally Adjusted**

	November <sup>p</sup> 2025	October <sup>r</sup> 2025	November 2024	Over-the-Month Change		Over-the-Year Change	
				Level	Percent	Level	Percent
Total Nonagricultural Employment	10,047,900	10,048,200	9,972,600	-300	*	75,300	0.8%
Total Private	8,877,600	8,877,800	8,807,500	-200	*	70,100	0.8%
Goods Producing	1,082,700	1,086,600	1,089,000	-3,900	-0.4%	-6,300	-0.6%
Mining, Logging, and Construction	655,200	657,200	659,800	-2,000	-0.3%	-4,600	-0.7%
Construction	649,600	651,600	654,200	-2,000	-0.3%	-4,600	-0.7%
Manufacturing	427,500	429,400	429,200	-1,900	-0.4%	-1,700	-0.4%
Durable Goods	298,500	299,500	294,800	-1,000	-0.3%	3,700	1.3%
Nondurable Goods	129,000	129,900	134,400	-900	-0.7%	-5,400	-4.0%
Service Producing	8,965,200	8,961,600	8,883,600	3,600	*	81,600	0.9%
Private Service Providing	7,794,900	7,791,200	7,718,500	3,700	*	76,400	1.0%
Trade, Transportation, and Utilities	2,020,800	2,019,400	2,002,500	1,400	0.1%	18,300	0.9%
Wholesale Trade	404,700	404,100	400,700	600	0.1%	4,000	1.0%
Retail Trade	1,166,900	1,168,000	1,159,100	-1,100	-0.1%	7,800	0.7%
Transportation, Warehousing, and Utilities	449,200	447,300	442,700	1,900	0.4%	6,500	1.5%
Information	160,000	158,400	155,600	1,600	1.0%	4,400	2.8%
Financial Activities	687,400	688,700	684,500	-1,300	-0.2%	2,900	0.4%
Finance and Insurance	462,000	463,900	466,100	-1,900	-0.4%	-4,100	-0.9%
Real Estate, Rental, and Leasing	225,400	224,800	218,400	600	0.3%	7,000	3.2%
Professional and Business Services	1,619,200	1,624,900	1,617,100	-5,700	-0.4%	2,100	0.1%
Professional and Technical Services	766,600	768,300	756,500	-1,700	-0.2%	10,100	1.3%
Management of Companies and Enterprises	142,000	142,800	138,100	-800	-0.6%	3,900	2.8%
Administrative and Waste Services	710,600	713,800	722,500	-3,200	-0.4%	-11,900	-1.6%
Education and Health Services	1,603,100	1,595,000	1,554,100	8,100	0.5%	49,000	3.2%
Educational Services	227,400	226,100	217,900	1,300	0.6%	9,500	4.4%
Health Care and Social Assistance	1,375,700	1,368,900	1,336,200	6,800	0.5%	39,500	3.0%
Leisure and Hospitality	1,321,800	1,321,100	1,322,500	700	0.1%	-700	-0.1%
Arts, Entertainment, and Recreation	270,800	268,900	268,600	1,900	0.7%	2,200	0.8%
Accommodation and Food Services	1,051,000	1,052,200	1,053,900	-1,200	-0.1%	-2,900	-0.3%
Other Services	382,600	383,700	382,200	-1,100	-0.3%	400	0.1%

Source: U.S. Department of Labor, Bureau of Labor Statistics, Current Employment Statistics Program.  
Prepared by: Florida Department of Commerce, Bureau of Workforce Statistics and Economic Research.

# Nonagricultural Employment in Florida Seasonally Adjusted

	November <sup>p</sup> 2025	October <sup>r</sup> 2025	November 2024	Over-the-Month Change		Over-the-Year Change	
				Level	Percent	Level	Percent
Total Government	1,170,300	1,170,400	1,165,100	-100	*	5,200	0.4%
Federal Government	152,900	153,300	162,300	-400	-0.3%	-9,400	-5.8%
State Government	257,000	257,500	256,500	-500	-0.2%	500	0.2%
Local Government	760,400	759,600	746,300	800	0.1%	14,100	1.9%

Released: January 07, 2026

p = preliminary, r = revised

\* - less than 0.1 percent

Note: Sum of detail may not equal totals due to rounding or the exclusion of certain industries from publication. All data are subject to revision.

**NONAGRICULTURAL EMPLOYMENT IN FLORIDA  
STATEWIDE (Not Seasonally Adjusted)**

Released January 07, 2026

Series	Industry Title	November 2025	October 2025	November 2024	Change from Oct 2025 to Nov 2025		Change from Nov 2024 to Nov 2025	
					Level	Percent	Level	Percent
00000000	Total Nonfarm	10,134,300	10,076,400	10,069,700	57,900	0.6%	64,600	0.6%
05000000	Total Private	8,941,700	8,883,400	8,882,400	58,300	0.7%	59,300	0.7%
06000000	Goods Producing	1,085,800	1,085,900	1,094,500	-100	*	-8,700	-0.8%
07000000	Service-Providing	9,048,500	8,990,500	8,975,200	58,000	0.6%	73,300	0.8%
08000000	Private Service Providing	7,855,900	7,797,500	7,787,900	58,400	0.7%	68,000	0.9%
10000000	Mining and Logging	5,600	5,600	5,600	0	0.0%	0	0.0%
10212000	Mining (except Oil and Gas)	3,400	3,400	3,400	0	0.0%	0	0.0%
15000000	Mining, Logging and Construction	657,400	658,600	663,900	-1,200	-0.2%	-6,500	-1.0%
20000000	Construction	651,800	653,000	658,300	-1,200	-0.2%	-6,500	-1.0%
20236000	Construction of Buildings	138,100	138,400	133,600	-300	-0.2%	4,500	3.4%
20237000	Heavy and Civil Engineering Construction	87,900	88,100	86,400	-200	-0.2%	1,500	1.7%
20238000	Specialty Trade Contractors	425,800	426,500	438,300	-700	-0.2%	-12,500	-2.9%
20238200	Building Equipment Contractors	187,700	188,600	193,300	-900	-0.5%	-5,600	-2.9%
30000000	Manufacturing	428,400	427,300	430,600	1,100	0.3%	-2,200	-0.5%
31000000	Durable Goods	299,400	298,300	295,800	1,100	0.4%	3,600	1.2%
31332000	Fabricated Metal Product Manufacturing	46,400	46,600	46,000	-200	-0.4%	400	0.9%
31334000	Computer and Electronic Product Manufacturing	48,400	48,300	47,600	100	0.2%	800	1.7%
31334200	Communications Equipment Manufacturing	5,400	5,400	5,300	0	0.0%	100	1.9%
31336000	Transportation Equipment Manufacturing	58,500	58,400	57,600	100	0.2%	900	1.6%
31336400	Aerospace Product and Parts Manufacturing	34,700	34,600	34,100	100	0.3%	600	1.8%
31339000	Miscellaneous Manufacturing	37,800	37,800	37,700	0	0.0%	100	0.3%
32000000	Non-Durable Goods	129,000	129,000	134,800	0	0.0%	-5,800	-4.3%
32311000	Food Manufacturing	38,500	38,400	40,100	100	0.3%	-1,600	-4.0%
32312000	Beverage and Tobacco Product Manufacturing	13,100	13,200	14,100	-100	-0.8%	-1,000	-7.1%
32322000	Paper Manufacturing	7,000	7,000	7,400	0	0.0%	-400	-5.4%
32323000	Printing and Related Support Activities	15,100	15,200	15,900	-100	-0.7%	-800	-5.0%
32325000	Chemical Manufacturing	28,400	28,400	29,200	0	0.0%	-800	-2.7%
40000000	Trade, Transportation, and Utilities	2,055,700	2,017,000	2,045,200	38,700	1.9%	10,500	0.5%
41000000	Wholesale Trade	405,800	405,600	400,400	200	*	5,400	1.3%
41423000	Merchant Wholesalers, Durable Goods	221,000	221,600	219,000	-600	-0.3%	2,000	0.9%
41423400	Professional and Commercial Equipment and Supplies Merchant Wholesalers	60,600	60,600	59,700	0	0.0%	900	1.5%
41423600	Household Appliances and Electrical and Electronic Goods Merchant Wholesalers	24,600	24,700	24,900	-100	-0.4%	-300	-1.2%
41423800	Machinery, Equipment, and Supplies Merchant Wholesalers	40,000	39,900	40,100	100	0.3%	-100	-0.2%
41424000	Merchant Wholesalers, Nondurable Goods	159,500	159,000	156,800	500	0.3%	2,700	1.7%
41424400	Grocery and Related Product Merchant Wholesalers	64,000	63,900	63,500	100	0.2%	500	0.8%
41425000	Wholesale Trade Agents and Brokers	25,300	25,000	24,600	300	1.2%	700	2.8%
42000000	Retail Trade	1,186,100	1,166,200	1,186,600	19,900	1.7%	-500	*
42441000	Motor Vehicle and Parts Dealers	171,300	172,500	168,000	-1,200	-0.7%	3,300	2.0%
42441100	Automobile Dealers	110,500	111,100	106,900	-600	-0.5%	3,600	3.4%

Source: U.S. Department of Labor, Bureau of Labor Statistics, Current Employment Statistics Program.

Prepared by: Florida Department of Commerce, Bureau of Workforce Statistics and Economic Research.



**NONAGRICULTURAL EMPLOYMENT IN FLORIDA  
STATEWIDE (Not Seasonally Adjusted)**

Released January 07, 2026

Series	Industry Title	November 2025	October 2025	November 2024	Change from Oct 2025 to Nov 2025		Change from Nov 2024 to Nov 2025	
					Level	Percent	Level	Percent
42444000	Building Material and Garden Equipment and Supplies Dealers	92,400	92,100	97,600	300	0.3%	-5,200	-5.3%
42445000	Food and Beverage Retailers	278,900	275,800	271,900	3,100	1.1%	7,000	2.6%
42449000	Furniture, Home Furnishings, Electronics, and Appliance Retailers	66,300	64,800	67,200	1,500	2.3%	-900	-1.3%
42449100	Furniture and Home Furnishings Retailers	34,800	34,000	35,300	800	2.4%	-500	-1.4%
42449200	Electronics and Appliance Retailers	31,500	30,800	31,900	700	2.3%	-400	-1.3%
42455000	General Merchandise Retailers	239,500	229,800	236,800	9,700	4.2%	2,700	1.1%
42455100	Department Stores	75,300	69,400	75,000	5,900	8.5%	300	0.4%
42455200	Warehouse Clubs, Supercenters, and Other General Merchandise Retailers	164,200	160,400	161,800	3,800	2.4%	2,400	1.5%
42456000	Health and Personal Care Retailers	89,000	87,000	89,400	2,000	2.3%	-400	-0.4%
42457000	Gasoline Stations and Fuel Dealers	50,100	49,900	49,800	200	0.4%	300	0.6%
42458000	Clothing, Clothing Accessories, Shoe, and Jewelry Retailers	96,200	92,800	101,900	3,400	3.7%	-5,700	-5.6%
42459000	Sporting Goods, Hobby, Musical Instrument, Book, and Miscellaneous Retailers	102,400	101,500	104,000	900	0.9%	-1,600	-1.5%
<b>43000000</b>	<b>Transportation, Warehousing, and Utilities</b>	<b>463,800</b>	<b>445,200</b>	<b>458,200</b>	<b>18,600</b>	<b>4.2%</b>	<b>5,600</b>	<b>1.2%</b>
43220000	Utilities	26,700	26,300	26,400	400	1.5%	300	1.1%
43400089	Transportation and Warehousing	437,100	418,900	431,800	18,200	4.3%	5,300	1.2%
43481000	Air Transportation	59,200	58,000	59,300	1,200	2.1%	-100	-0.2%
43483000	Water Transportation	19,800	19,300	19,600	500	2.6%	200	1.0%
43484000	Truck Transportation	63,400	63,900	63,800	-500	-0.8%	-400	-0.6%
43488000	Support Activities for Transportation	75,800	74,000	73,800	1,800	2.4%	2,000	2.7%
43492000	Couriers and Messengers	79,400	73,200	72,200	6,200	8.5%	7,200	10.0%
43493000	Warehousing and Storage	112,300	104,200	113,300	8,100	7.8%	-1,000	-0.9%
50000000	Information	160,700	158,100	155,800	2,600	1.6%	4,900	3.1%
50513000	Publishing Industries	43,700	43,600	42,600	100	0.2%	1,100	2.6%
50516000	Broadcasting and Content Providers	17,100	17,100	16,700	0	0.0%	400	2.4%
50517000	Telecommunications	46,100	45,600	45,500	500	1.1%	600	1.3%
50517111	Wired Telecommunications Carriers	34,200	34,100	34,500	100	0.3%	-300	-0.9%
50518000	Computing Infrastructure Providers, Data Processing, Web Hosting, and Related	29,500	29,200	30,000	300	1.0%	-500	-1.7%
55000000	Financial Activities	691,300	693,100	690,000	-1,800	-0.3%	1,300	0.2%
<b>55520000</b>	<b>Finance and Insurance</b>	<b>464,800</b>	<b>467,000</b>	<b>469,500</b>	<b>-2,200</b>	<b>-0.5%</b>	<b>-4,700</b>	<b>-1.0%</b>
55522000	Credit Intermediation and Related Activities including Monetary Authorities - Cent	179,900	181,200	179,000	-1,300	-0.7%	900	0.5%
55522100	Depository Credit Intermediation including Monetary Authorities - Central Bank	123,900	123,700	122,600	200	0.2%	1,300	1.1%
55524000	Insurance Carriers and Related Activities	214,900	215,900	222,800	-1,000	-0.5%	-7,900	-3.5%
55524100	Insurance Carriers	96,600	96,300	101,000	300	0.3%	-4,400	-4.4%
55524200	Agencies, Brokerages, and Other Insurance Related Activities	118,300	119,600	121,800	-1,300	-1.1%	-3,500	-2.9%
<b>55530000</b>	<b>Real Estate and Rental and Leasing</b>	<b>226,500</b>	<b>226,100</b>	<b>220,500</b>	<b>400</b>	<b>0.2%</b>	<b>6,000</b>	<b>2.7%</b>
55531000	Real Estate	173,500	173,100	169,200	400	0.2%	4,300	2.5%
60000000	Professional and Business Services	1,627,600	1,636,000	1,628,900	-8,400	-0.5%	-1,300	-0.1%
<b>60540000</b>	<b>Professional, Scientific, and Technical Services</b>	<b>768,700</b>	<b>771,700</b>	<b>759,900</b>	<b>-3,000</b>	<b>-0.4%</b>	<b>8,800</b>	<b>1.2%</b>
60541100	Legal Services	114,600	114,000	111,800	600	0.5%	2,800	2.5%

Source: U.S. Department of Labor, Bureau of Labor Statistics, Current Employment Statistics Program.

Prepared by: Florida Department of Commerce, Bureau of Workforce Statistics and Economic Research.

**NONAGRICULTURAL EMPLOYMENT IN FLORIDA  
STATEWIDE (Not Seasonally Adjusted)**

Released January 07, 2026

Series	Industry Title	November 2025	October 2025	November 2024	Change from			
					Oct 2025 to Nov 2025 Level	Percent	Nov 2024 to Nov 2025 Level	Percent
60541200	Accounting, Tax Preparation, Bookkeeping, and Payroll Services	94,600	94,600	90,000	0	0.0%	4,600	5.1%
60541300	Architectural, Engineering, and Related Services	115,000	115,300	114,700	-300	-0.3%	300	0.3%
60541500	Computer Systems Design and Related Services	137,600	137,900	138,400	-300	-0.2%	-800	-0.6%
60541600	Management, Scientific, and Technical Consulting Services	167,300	167,100	163,800	200	0.1%	3,500	2.1%
<b>60550000</b>	<b>Management of Companies and Enterprises</b>	<b>142,600</b>	<b>142,700</b>	<b>139,200</b>	<b>-100</b>	<b>-0.1%</b>	<b>3,400</b>	<b>2.4%</b>
<b>60560000</b>	<b>Administrative and Support and Waste Management and Remediation Services</b>	<b>716,300</b>	<b>721,600</b>	<b>729,800</b>	<b>-5,300</b>	<b>-0.7%</b>	<b>-13,500</b>	<b>-1.8%</b>
60561000	Administrative and Support Services	683,400	688,700	696,900	-5,300	-0.8%	-13,500	-1.9%
60561300	Employment Services	222,800	224,900	231,100	-2,100	-0.9%	-8,300	-3.6%
60561400	Business Support Services	69,400	68,700	70,800	700	1.0%	-1,400	-2.0%
60561500	Travel Arrangement and Reservation Services	28,200	28,300	28,100	-100	-0.4%	100	0.4%
60561600	Investigation and Security Services	80,500	81,400	77,100	-900	-1.1%	3,400	4.4%
60561700	Services to Buildings and Dwellings	199,400	202,100	199,900	-2,700	-1.3%	-500	-0.3%
60562000	Waste Management and Remediation Services	32,900	32,900	32,900	0	0.0%	0	0.0%
65000000	Private Education and Health Services	1,621,400	1,606,900	1,569,000	14,500	0.9%	52,400	3.3%
<b>65610000</b>	<b>Private Educational Services</b>	<b>237,400</b>	<b>235,400</b>	<b>226,500</b>	<b>2,000</b>	<b>0.8%</b>	<b>10,900</b>	<b>4.8%</b>
65611100	Private Elementary and Secondary Schools	97,300	97,000	91,800	300	0.3%	5,500	6.0%
65611300	Private Colleges, Universities, and Professional Schools	72,200	71,000	70,500	1,200	1.7%	1,700	2.4%
<b>65620000</b>	<b>Health Care and Social Assistance</b>	<b>1,384,000</b>	<b>1,371,500</b>	<b>1,342,500</b>	<b>12,500</b>	<b>0.9%</b>	<b>41,500</b>	<b>3.1%</b>
65621000	Ambulatory Health Care Services	636,600	630,900	621,200	5,700	0.9%	15,400	2.5%
65621100	Offices of Physicians	272,600	270,300	262,300	2,300	0.9%	10,300	3.9%
65621600	Home Health Care Services	94,100	92,900	88,000	1,200	1.3%	6,100	6.9%
65622000	Hospitals	375,900	374,000	368,700	1,900	0.5%	7,200	2.0%
<b>65623000</b>	<b>Nursing and Residential Care Facilities</b>	<b>205,800</b>	<b>202,600</b>	<b>196,100</b>	<b>3,200</b>	<b>1.6%</b>	<b>9,700</b>	<b>4.9%</b>
65623100	Nursing Care Facilities (Skilled Nursing Facilities)	96,900	96,100	92,500	800	0.8%	4,400	4.8%
65623300	Continuing Care Retirement Communities and Assisted Living Facilities for the Elderly	74,400	73,800	70,600	600	0.8%	3,800	5.4%
65624000	Social Assistance	165,700	164,000	156,500	1,700	1.0%	9,200	5.9%
70000000	Leisure and Hospitality	1,317,400	1,304,600	1,316,000	12,800	1.0%	1,400	0.1%
<b>70710000</b>	<b>Arts, Entertainment, and Recreation</b>	<b>274,000</b>	<b>266,300</b>	<b>270,100</b>	<b>7,700</b>	<b>2.9%</b>	<b>3,900</b>	<b>1.4%</b>
70713000	Amusement, Gambling, and Recreation Industries	217,500	209,500	216,100	8,000	3.8%	1,400	0.6%
70713100	Amusement Parks and Arcades	85,200	86,000	86,500	-800	-0.9%	-1,300	-1.5%
<b>70720000</b>	<b>Accommodation and Food Services</b>	<b>1,043,400</b>	<b>1,038,300</b>	<b>1,045,900</b>	<b>5,100</b>	<b>0.5%</b>	<b>-2,500</b>	<b>-0.2%</b>
70721000	Accommodation	196,200	196,000	200,300	200	0.1%	-4,100	-2.0%
70722000	Food Services and Drinking Places	847,200	842,300	845,600	4,900	0.6%	1,600	0.2%
80000000	Other Services	381,800	381,800	383,000	0	0.0%	-1,200	-0.3%
80811000	Repair and Maintenance	94,500	94,800	100,200	-300	-0.3%	-5,700	-5.7%
80811100	Automotive Repair and Maintenance	61,500	61,600	65,500	-100	-0.2%	-4,000	-6.1%
80812000	Personal and Laundry Services	109,900	109,100	110,200	800	0.7%	-300	-0.3%
80813000	Religious, Grantmaking, Civic, Professional, and Similar Organizations	177,400	177,900	172,600	-500	-0.3%	4,800	2.8%
90000000	Government	1,192,600	1,193,000	1,187,300	-400	*	5,300	0.4%

Source: U.S. Department of Labor, Bureau of Labor Statistics, Current Employment Statistics Program.

Prepared by: Florida Department of Commerce, Bureau of Workforce Statistics and Economic Research.

**NONAGRICULTURAL EMPLOYMENT IN FLORIDA  
STATEWIDE (Not Seasonally Adjusted)**

Released January 07, 2026

		Change from						
Series	Industry Title	November 2025	October 2025	November 2024	Oct 2025 to Nov 2025 Level	Nov 2024 to Nov 2025 Percent	Level	Percent
90910000	Federal Government	153,300	152,900	163,400	400	0.3%	-10,100	-6.2%
90920000	State Government	265,200	265,900	265,200	-700	-0.3%	0	0.0%
90921611	State Government Educational Services	152,900	152,700	153,000	200	0.1%	-100	-0.1%
90922000	State Government Excluding Education	112,300	113,200	112,200	-900	-0.8%	100	0.1%
90930000	Local Government	774,100	774,200	758,700	-100	*	15,400	2.0%
90931611	Local Government Educational Services	352,900	353,600	350,900	-700	-0.2%	2,000	0.6%
90932000	Local Government excluding Educational Services	421,200	420,600	407,800	600	0.1%	13,400	3.3%

\* - less than 0.1 percent

Note: Employment estimates have been rounded to the nearest hundred. Sum of detail may not equal totals due to rounding or the exclusion of certain industries from publication. All data are subject to revision.

STATE OF FLORIDA  
LOCAL AREA UNEMPLOYMENT STATISTICS BY COUNTY  
(NOT SEASONALLY ADJUSTED)

COUNTY	NOVEMBER 2025				OCTOBER 2025				NOVEMBER 2024			
	LABOR FORCE	EMPLOY- MENT	UNEMPLOYMENT LEVEL	RATE	LABOR FORCE	EMPLOY- MENT	UNEMPLOYMENT LEVEL	RATE	LABOR FORCE	EMPLOY- MENT	UNEMPLOYMENT LEVEL	RATE
Alachua County	145,673	137,254	8,419	5.8%	-	-	-	-	144,313	138,492	5,821	4.0%
Baker County	12,291	11,662	629	5.1%	-	-	-	-	12,181	11,742	439	3.6%
Bay County	90,824	86,132	4,692	5.2%	-	-	-	-	91,491	88,318	3,173	3.5%
Bradford County	10,464	9,890	574	5.5%	-	-	-	-	10,322	9,916	406	3.9%
Brevard County	306,674	290,244	16,430	5.4%	-	-	-	-	304,906	293,820	11,086	3.6%
Broward County	1,086,836	1,036,490	50,346	4.6%	-	-	-	-	1,083,704	1,048,542	35,162	3.2%
Calhoun County	5,106	4,812	294	5.8%	-	-	-	-	5,090	4,889	201	3.9%
Charlotte County	78,526	73,593	4,933	6.3%	-	-	-	-	76,795	73,285	3,510	4.6%
Citrus County	54,032	49,969	4,063	7.5%	-	-	-	-	53,422	50,655	2,767	5.2%
Clay County	116,376	110,298	6,078	5.2%	-	-	-	-	114,989	110,903	4,086	3.6%
Collier County	185,731	175,987	9,744	5.2%	-	-	-	-	184,465	177,967	6,498	3.5%
Columbia County	28,867	27,175	1,692	5.9%	-	-	-	-	28,075	26,870	1,205	4.3%
DeSoto County	12,722	11,926	796	6.3%	-	-	-	-	12,555	12,012	543	4.3%
Dixie County	5,977	5,582	395	6.6%	-	-	-	-	5,860	5,585	275	4.7%
Duval County	530,590	503,521	27,069	5.1%	-	-	-	-	524,629	505,883	18,746	3.6%
Escambia County	148,535	140,180	8,355	5.6%	-	-	-	-	148,159	142,510	5,649	3.8%
Flagler County	55,571	52,192	3,379	6.1%	-	-	-	-	55,027	52,761	2,266	4.1%
Franklin County	4,338	4,076	262	6.0%	-	-	-	-	4,367	4,191	176	4.0%
Gadsden County	17,795	16,709	1,086	6.1%	-	-	-	-	17,849	17,077	772	4.3%
Gilchrist County	8,323	7,873	450	5.4%	-	-	-	-	8,249	7,953	296	3.6%
Glades County	4,007	3,718	289	7.2%	-	-	-	-	3,894	3,695	199	5.1%
Gulf County	6,967	6,620	347	5.0%	-	-	-	-	6,663	6,441	222	3.3%
Hamilton County	4,182	3,893	289	6.9%	-	-	-	-	4,107	3,900	207	5.0%
Hardee County	9,784	9,137	647	6.6%	-	-	-	-	9,833	9,384	449	4.6%
Hendry County	22,317	21,107	1,210	5.4%	-	-	-	-	21,339	20,502	837	3.9%
Hernando County	92,122	86,829	5,293	5.7%	-	-	-	-	91,016	87,154	3,862	4.2%
Highlands County	36,555	33,897	2,658	7.3%	-	-	-	-	36,652	34,838	1,814	4.9%
Hillsborough County	818,484	777,861	40,623	5.0%	-	-	-	-	809,817	780,922	28,895	3.6%
Holmes County	7,691	7,262	429	5.6%	-	-	-	-	7,773	7,467	306	3.9%
Indian River County	67,706	63,533	4,173	6.2%	-	-	-	-	67,315	64,490	2,825	4.2%
Jackson County	18,833	17,775	1,058	5.6%	-	-	-	-	18,363	17,651	712	3.9%
Jefferson County	7,126	6,763	363	5.1%	-	-	-	-	7,152	6,924	228	3.2%
Lafayette County	2,636	2,457	179	6.8%	-	-	-	-	2,574	2,450	124	4.8%
Lake County	198,672	188,118	10,554	5.3%	-	-	-	-	197,492	190,349	7,143	3.6%
Lee County	377,845	356,985	20,860	5.5%	-	-	-	-	372,448	358,505	13,943	3.7%
Leon County	167,031	158,038	8,993	5.4%	-	-	-	-	168,487	162,206	6,281	3.7%
Levy County	19,382	18,246	1,136	5.9%	-	-	-	-	19,248	18,432	816	4.2%
Liberty County	2,526	2,372	154	6.1%	-	-	-	-	2,492	2,393	99	4.0%
Madison County	6,886	6,452	434	6.3%	-	-	-	-	6,801	6,509	292	4.3%

Source: U.S. Department of Labor, Bureau of Labor Statistics, Local Area Unemployment Statistics Program, in cooperation with the Florida Department of Commerce, Bureau of Workforce Statistics and Economic Research.

STATE OF FLORIDA  
LOCAL AREA UNEMPLOYMENT STATISTICS BY COUNTY  
(NOT SEASONALLY ADJUSTED)

COUNTY	NOVEMBER 2025				OCTOBER 2025				NOVEMBER 2024			
	LABOR FORCE	EMPLOY- MENT	UNEMPLOYMENT LEVEL	RATE	LABOR FORCE	EMPLOY- MENT	UNEMPLOYMENT LEVEL	RATE	LABOR FORCE	EMPLOY- MENT	UNEMPLOYMENT LEVEL	RATE
Manatee County	199,115	188,297	10,818	5.4%	-	-	-	-	197,078	189,476	7,602	3.9%
Marion County	161,338	151,232	10,106	6.3%	-	-	-	-	158,710	151,880	6,830	4.3%
Martin County	72,729	68,850	3,879	5.3%	-	-	-	-	72,212	69,574	2,638	3.7%
Miami-Dade County	1,459,028	1,412,532	46,496	3.2%	-	-	-	-	1,435,262	1,400,418	34,844	2.4%
Monroe County	51,303	49,462	1,841	3.6%	-	-	-	-	49,448	48,261	1,187	2.4%
Nassau County	47,986	45,560	2,426	5.1%	-	-	-	-	47,411	45,818	1,593	3.4%
Okaloosa County	100,509	95,450	5,059	5.0%	-	-	-	-	100,628	97,232	3,396	3.4%
Okeechobee County	16,278	15,319	959	5.9%	-	-	-	-	15,902	15,248	654	4.1%
Orange County	827,585	788,082	39,503	4.8%	-	-	-	-	825,147	797,395	27,752	3.4%
Osceola County	236,390	224,440	11,950	5.1%	-	-	-	-	235,441	226,983	8,458	3.6%
Palm Beach County	784,137	745,143	38,994	5.0%	-	-	-	-	773,241	746,539	26,702	3.5%
Pasco County	300,971	284,828	16,143	5.4%	-	-	-	-	297,010	285,461	11,549	3.9%
Pinellas County	500,354	476,512	23,842	4.8%	-	-	-	-	498,998	480,557	18,441	3.7%
Polk County	361,402	339,580	21,822	6.0%	-	-	-	-	358,201	342,719	15,482	4.3%
Putnam County	30,301	28,407	1,894	6.3%	-	-	-	-	29,296	27,991	1,305	4.5%
Santa Rosa County	90,644	85,739	4,905	5.4%	-	-	-	-	90,403	87,116	3,287	3.6%
Sarasota County	201,979	190,729	11,250	5.6%	-	-	-	-	198,726	191,173	7,553	3.8%
Seminole County	278,346	265,641	12,705	4.6%	-	-	-	-	277,805	269,041	8,764	3.2%
St. Johns County	157,929	149,914	8,015	5.1%	-	-	-	-	155,823	150,387	5,436	3.5%
St. Lucie County	169,769	160,149	9,620	5.7%	-	-	-	-	168,624	161,838	6,786	4.0%
Sumter County	34,912	31,788	3,124	8.9%	-	-	-	-	34,202	32,183	2,019	5.9%
Suwannee County	18,174	17,114	1,060	5.8%	-	-	-	-	17,740	17,007	733	4.1%
Taylor County	5,709	5,172	537	9.4%	-	-	-	-	5,625	5,275	350	6.2%
Union County	4,403	4,111	292	6.6%	-	-	-	-	4,263	4,062	201	4.7%
Volusia County	267,527	252,148	15,379	5.7%	-	-	-	-	265,799	255,059	10,740	4.0%
Wakulla County	18,097	17,287	810	4.5%	-	-	-	-	18,153	17,623	530	2.9%
Walton County	40,619	38,654	1,965	4.8%	-	-	-	-	40,692	39,385	1,307	3.2%
Washington County	9,241	8,656	585	6.3%	-	-	-	-	9,294	8,898	396	4.3%
Florida (Not Seasonally Adjusted)	11,223,000	10,667,000	555,000	4.9%	-	-	-	-	11,121,000	10,732,000	389,000	3.5%
Florida (Seasonally Adjusted)	11,209,000	10,743,000	466,000	4.2%	-	-	-	-	11,169,000	10,783,000	386,000	3.5%
United States (Not Seasonally Adjusted)	171,467,000	164,066,000	7,401,000	4.3%	-	-	-	-	168,164,000	161,456,000	6,708,000	4.0%
United States (Seasonally Adjusted)	171,571,000	163,741,000	7,831,000	4.6%	-	-	-	-	168,304,000	161,183,000	7,121,000	4.2%

*Note: Unemployment and labor force statistics for October 2025 are not available due to a lapse in federal data collection activities.*

Released: Wednesday, January 07, 2026

NOTE: Items may not add to totals or compute to displayed percentages due to rounding. All data are subject to revision.

Source: U.S. Department of Labor, Bureau of Labor Statistics, Local Area Unemployment Statistics Program, in cooperation with the Florida Department of Commerce, Bureau of Workforce Statistics and Economic Research.

STATE OF FLORIDA  
LOCAL AREA UNEMPLOYMENT STATISTICS BY METROPOLITAN STATISTICAL AREA (MSA) AND METROPOLITAN DIVISION (MD)  
(NOT SEASONALLY ADJUSTED)

MSA/MD	NOVEMBER 2025				OCTOBER 2025				NOVEMBER 2024			
	LABOR FORCE	EMPLOY- MENT	UNEMPLOYMENT LEVEL	UNEMPLOYMENT RATE	LABOR FORCE	EMPLOY- MENT	UNEMPLOYMENT LEVEL	UNEMPLOYMENT RATE	LABOR FORCE	EMPLOY- MENT	UNEMPLOYMENT LEVEL	UNEMPLOYMENT RATE
Cape Coral-Fort Myers MSA	377,845	356,985	20,860	5.5%	-	-	-	-	372,448	358,505	13,943	3.7%
Crestview-Fort Walton Beach-Destin MSA	141,128	134,104	7,024	5.0%	-	-	-	-	141,320	136,617	4,703	3.3%
Deltona-Daytona Beach-Ormond Beach MSA	323,098	304,340	18,758	5.8%	-	-	-	-	320,826	307,820	13,006	4.1%
Gainesville MSA	173,378	163,373	10,005	5.8%	-	-	-	-	171,810	164,877	6,933	4.0%
Homosassa Springs MSA	54,032	49,969	4,063	7.5%	-	-	-	-	53,422	50,655	2,767	5.2%
Jacksonville MSA	865,172	820,955	44,217	5.1%	-	-	-	-	855,033	824,733	30,300	3.5%
Lakeland-Winter Haven MSA	361,402	339,580	21,822	6.0%	-	-	-	-	358,201	342,719	15,482	4.3%
Miami-Fort Lauderdale-West Palm Beach MSA	3,330,001	3,194,165	135,836	4.1%	-	-	-	-	3,292,207	3,195,499	96,708	2.9%
Fort Lauderdale-Pompano Beach-Sunrise Division	1,086,836	1,036,490	50,346	4.6%	-	-	-	-	1,083,704	1,048,542	35,162	3.2%
Miami-Miami Beach-Kendall MD	1,459,028	1,412,532	46,496	3.2%	-	-	-	-	1,435,262	1,400,418	34,844	2.4%
West Palm Beach-Boca Raton-Delray Beach MD	784,137	745,143	38,994	5.0%	-	-	-	-	773,241	746,539	26,702	3.5%
Naples-Marco Island MSA	185,731	175,987	9,744	5.2%	-	-	-	-	184,465	177,967	6,498	3.5%
North Port-Bradenton-Sarasota MSA	401,094	379,026	22,068	5.5%	-	-	-	-	395,804	380,649	15,155	3.8%
Ocala MSA	161,338	151,232	10,106	6.3%	-	-	-	-	158,710	151,880	6,830	4.3%
Orlando-Kissimmee-Sanford MSA	1,540,993	1,466,281	74,712	4.8%	-	-	-	-	1,535,885	1,483,768	52,117	3.4%
Palm Bay-Melbourne-Titusville MSA	306,674	290,244	16,430	5.4%	-	-	-	-	304,906	293,820	11,086	3.6%
Panama City-Panama City Beach MSA	100,065	94,788	5,277	5.3%	-	-	-	-	100,785	97,216	3,569	3.5%
Pensacola-Ferry Pass-Brent MSA	239,179	225,919	13,260	5.5%	-	-	-	-	238,562	229,626	8,936	3.7%
Port St. Lucie MSA	242,498	228,999	13,499	5.6%	-	-	-	-	240,836	231,412	9,424	3.9%
Punta Gorda MSA	78,526	73,593	4,933	6.3%	-	-	-	-	76,795	73,285	3,510	4.6%
Sebastian-Vero Beach MSA	67,706	63,533	4,173	6.2%	-	-	-	-	67,315	64,490	2,825	4.2%
Sebring MSA	36,555	33,897	2,658	7.3%	-	-	-	-	36,652	34,838	1,814	4.9%
Tallahassee MSA	210,049	198,797	11,252	5.4%	-	-	-	-	211,641	203,830	7,811	3.7%
Tampa-St. Petersburg-Clearwater MSA	1,711,931	1,626,030	85,901	5.0%	-	-	-	-	1,696,841	1,634,094	62,747	3.7%
St. Petersburg-Clearwater-Largo MD	500,354	476,512	23,842	4.8%	-	-	-	-	498,998	480,557	18,441	3.7%
Tampa MD	1,211,577	1,149,518	62,059	5.1%	-	-	-	-	1,197,843	1,153,537	44,306	3.7%
Wildwood-The Villages MSA	34,912	31,788	3,124	8.9%	-	-	-	-	34,202	32,183	2,019	5.9%
								-				
Florida (Not Seasonally Adjusted)	11,223,000	10,667,000	555,000	4.9%	-	-	-	-	11,121,000	10,732,000	389,000	3.5%
Florida (Seasonally Adjusted)	11,209,000	10,743,000	466,000	4.2%	-	-	-	-	11,169,000	10,783,000	386,000	3.5%
								-				
United States (Not Seasonally Adjusted)	171,467,000	164,066,000	7,401,000	4.3%	-	-	-	-	168,164,000	161,456,000	6,708,000	4.0%
United States (Seasonally Adjusted)	171,571,000	163,741,000	7,831,000	4.6%	-	-	-	-	168,304,000	161,183,000	7,121,000	4.2%

*Note: Unemployment and labor force statistics for October 2025 are not available due to a lapse in federal data collection activities.*

Released: Wednesday, January 07, 2026

NOTE: Items may not add to totals or compute to displayed percentages due to rounding. All data are subject to revision.

Source: U.S. Department of Labor, Bureau of Labor Statistics, Local Area Unemployment Statistics Program, in cooperation with the Florida Department of Commerce, Bureau of Workforce Statistics and Economic Research.

STATE OF FLORIDA  
COUNTIES RANKED BY UNEMPLOYMENT RATE  
(NOT SEASONALLY ADJUSTED)  
NOVEMBER 2025 (PRELIMINARY)

1	Taylor County	9.4%
2	Sumter County	8.9%
3	Citrus County	7.5%
4	Highlands County	7.3%
5	Glades County	7.2%
6	Hamilton County	6.9%
7	Lafayette County	6.8%
8	Dixie County	6.6%
8	Hardee County	6.6%
8	Union County	6.6%
11	Charlotte County	6.3%
11	DeSoto County	6.3%
11	Madison County	6.3%
11	Marion County	6.3%
11	Putnam County	6.3%
11	Washington County	6.3%
17	Indian River County	6.2%
18	Flagler County	6.1%
18	Gadsden County	6.1%
18	Liberty County	6.1%
21	Franklin County	6.0%
21	Polk County	6.0%
23	Columbia County	5.9%
23	Levy County	5.9%
23	Okeechobee County	5.9%
26	Alachua County	5.8%
26	Calhoun County	5.8%
26	Suwannee County	5.8%
29	Hernando County	5.7%
29	St. Lucie County	5.7%
29	Volusia County	5.7%
32	Escambia County	5.6%
32	Holmes County	5.6%
32	Jackson County	5.6%
32	Sarasota County	5.6%
36	Bradford County	5.5%
36	Lee County	5.5%
38	Brevard County	5.4%
38	Gilchrist County	5.4%
38	Hendry County	5.4%

STATE OF FLORIDA  
COUNTIES RANKED BY UNEMPLOYMENT RATE  
(NOT SEASONALLY ADJUSTED)  
NOVEMBER 2025 (PRELIMINARY)

38	Leon County	5.4%
38	Manatee County	5.4%
38	Pasco County	5.4%
38	Santa Rosa County	5.4%
45	Lake County	5.3%
45	Martin County	5.3%
47	Bay County	5.2%
47	Clay County	5.2%
47	Collier County	5.2%
50	Baker County	5.1%
50	Duval County	5.1%
50	Jefferson County	5.1%
50	Nassau County	5.1%
50	Osceola County	5.1%
50	St. Johns County	5.1%
56	Gulf County	5.0%
56	Hillsborough County	5.0%
56	Okaloosa County	5.0%
56	Palm Beach County	5.0%
	<b>Florida</b>	<b>4.9%</b>
60	Orange County	4.8%
60	Pinellas County	4.8%
60	Walton County	4.8%
63	Broward County	4.6%
63	Seminole County	4.6%
65	Wakulla County	4.5%
	<b>United States</b>	<b>4.3%</b>
66	Monroe County	3.6%
67	Miami-Dade County	3.2%

*Note: Unemployment and labor force statistics for October 2025 are not available due to a lapse in federal data collection activities.*

Source: U.S. Department of Labor, Bureau of Labor Statistics, Local Area Unemployment Statistics Program,  
in cooperation with the Florida Department of Commerce, Bureau of Workforce Statistics and Economic Research.

Released: Wednesday, January 7, 2026

NOTE: All data are subject to revision.



STATE OF FLORIDA  
METROPOLITAN STATISTICAL AREAS (MSAs) AND METROPOLITAN DIVISIONS (MDs)  
RANKED BY UNEMPLOYMENT RATE  
(NOT SEASONALLY ADJUSTED)  
NOVEMBER 2025 (PRELIMINARY)

1	Wildwood-The Villages MSA	8.9%
2	Homosassa Springs MSA	7.5%
3	Sebring MSA	7.3%
4	Ocala MSA	6.3%
4	Punta Gorda MSA	6.3%
6	Sebastian-Vero Beach MSA	6.2%
7	Lakeland-Winter Haven MSA	6.0%
8	Deltona-Daytona Beach-Ormond Beach MSA	5.8%
8	Gainesville MSA	5.8%
10	Port St. Lucie MSA	5.6%
11	Cape Coral-Fort Myers MSA	5.5%
11	North Port-Bradenton-Sarasota MSA	5.5%
11	Pensacola-Ferry Pass-Brent MSA	5.5%
14	Palm Bay-Melbourne-Titusville MSA	5.4%
14	Tallahassee MSA	5.4%
16	Panama City-Panama City Beach MSA	5.3%
17	Naples-Marco Island MSA	5.2%
18	Jacksonville MSA	5.1%
18	Tampa MD	5.1%
20	Crestview-Fort Walton Beach-Destin MSA	5.0%
20	West Palm Beach-Boca Raton-Delray Beach MD	5.0%
	<b>Florida</b>	<b>4.9%</b>
22	Orlando-Kissimmee-Sanford MSA	4.8%
22	St. Petersburg-Clearwater-Largo MD	4.8%
24	Fort Lauderdale-Pompano Beach-Sunrise MD	4.6%
	<b>United States</b>	<b>4.3%</b>
25	Miami-Miami Beach-Kendall MD	3.2%

*Note: Unemployment and labor force statistics for October 2025 are not available due to a lapse in federal data collection activities.*

Released: Wednesday, January 07, 2026

NOTE: All data are subject to revision.

TOTAL NONAGRICULTURAL EMPLOYMENT  
FLORIDA (Not Seasonally Adjusted)

Area	November 2025	October 2025	November 2024	Over-the-Month Change		Over-the-Year Change	
				Level	Percent	Level	Percent
Statewide	10,134,300	10,076,400	10,069,700	57,900	0.6%	64,600	0.6%
Cape Coral-Fort Myers MSA	318,800	316,700	315,700	2,100	0.7%	3,100	1.0%
Crestview-Fort Walton Beach-Destin MSA	130,200	130,600	131,200	-400	-0.3%	-1,000	-0.8%
Deltona-Daytona Beach-Ormond Beach MSA	231,000	228,900	230,300	2,100	0.9%	700	0.3%
Fort Lauderdale-Pompano Beach-Sunrise Division	941,400	938,800	938,500	2,600	0.3%	2,900	0.3%
Gainesville MSA	170,900	170,200	169,500	700	0.4%	1,400	0.8%
Homosassa Springs MSA	36,300	36,100	36,300	200	0.6%	0	0.0%
Jacksonville MSA	826,900	819,200	816,400	7,700	0.9%	10,500	1.3%
Lakeland-Winter Haven MSA	282,000	279,400	279,400	2,600	0.9%	2,600	0.9%
Miami-Ft. Lauderdale-West Palm Beach MSA	3,021,000	3,001,000	3,002,600	20,000	0.7%	18,400	0.6%
Miami-Miami Beach-Kendall MD	1,362,000	1,351,400	1,356,100	10,600	0.8%	5,900	0.4%
Naples-Marco Island MSA	178,200	175,500	178,100	2,700	1.5%	100	0.1%
North Port-Bradenton-Sarasota MSA	356,900	354,100	353,900	2,800	0.8%	3,000	0.8%
Ocala MSA	126,000	125,300	124,800	700	0.6%	1,200	1.0%
Orlando-Kissimmee-Sanford MSA	1,530,200	1,522,600	1,523,000	7,600	0.5%	7,200	0.5%
Palm Bay-Melbourne-Titusville MSA	262,300	260,800	261,100	1,500	0.6%	1,200	0.5%
Panama City-Panama City Beach MSA	90,600	90,800	92,000	-200	-0.2%	-1,400	-1.5%
Pensacola-Ferry Pass-Brent MSA	202,100	202,000	202,600	100	*	-500	-0.2%
Port St. Lucie MSA	179,700	178,600	179,300	1,100	0.6%	400	0.2%
Punta Gorda MSA	59,700	58,600	58,700	1,100	1.9%	1,000	1.7%
St. Petersburg - Clearwater - Largo Division	490,500	487,600	486,900	2,900	0.6%	3,600	0.7%
Sebastian-Vero Beach MSA	59,800	59,200	59,900	600	1.0%	-100	-0.2%
Sebring MSA	28,800	28,600	29,100	200	0.7%	-300	-1.0%
Tallahassee MSA	205,400	204,800	207,000	600	0.3%	-1,600	-0.8%
Tampa Division	1,090,900	1,086,900	1,075,900	4,000	0.4%	15,000	1.4%
Tampa-St. Petersburg-Clearwater MSA	1,581,400	1,574,500	1,562,800	6,900	0.4%	18,600	1.2%
West Palm Beach-Boca Raton-Delray Beach MD	717,600	710,800	708,000	6,800	1.0%	9,600	1.4%
Wildwood-The Villages MSA	42,000	42,000	42,000	0	0.0%	0	0.0%

\* - less than 0.1 percent

Note: Employment estimates have been rounded to the nearest hundred. Sum of detail may not equal totals due to rounding or the exclusion of certain industries from publication. All data are subject to revision. January 07, 2026.

**Total Nonagricultural Employment**  
**Florida and Selected Metropolitan Statistical Areas (MSAs) and Metropolitan Divisions (MDs)**

**Seasonally Adjusted**

Area	November <sup>p</sup> 2025	October <sup>r</sup> 2025	November 2024	Over-the-Month Change		Over-the-Year Change	
				Level	Percent	Level	Percent
Florida	10,047,900	10,048,200	9,972,600	-300	*	75,300	0.8%
Cape Coral-Fort Myers MSA	315,600	315,500	312,500	100	*	3,100	1.0%
Crestview-Fort Walton Beach-Destin MSA	130,600	131,100	131,200	-500	-0.4%	-600	-0.5%
Deltona-Daytona Beach-Ormond Beach MSA	229,600	229,100	228,700	500	0.2%	900	0.4%
Gainesville MSA	168,300	167,900	166,800	400	0.2%	1,500	0.9%
Homosassa Springs MSA	36,200	36,100	36,100	100	0.3%	100	0.3%
Jacksonville MSA	819,800	817,700	809,100	2,100	0.3%	10,700	1.3%
Lakeland-Winter Haven MSA	279,000	279,400	275,400	-400	-0.1%	3,600	1.3%
Miami-Ft. Lauderdale-West Palm Beach MSA	2,991,500	2,992,500	2,977,700	-1,000	*	13,800	-0.5%
Fort Lauderdale-Pompano Beach-Sunrise Division	932,700	932,700	927,900	0	*	4,800	0.5%
Miami-Miami Beach-Kendall MD	1,350,800	1,350,100	1,344,200	700	0.1%	6,600	0.5%
West Palm Beach-Boca Raton-Delray Beach MD	710,500	709,700	699,900	800	0.1%	10,600	1.5%
Naples-Marco Island MSA	176,500	176,500	176,300	0	*	200	0.1%
North Port-Bradenton-Sarasota MSA	355,500	355,600	352,100	-100	*	3,400	1.0%
Ocala MSA	124,800	125,200	123,500	-400	-0.3%	1,300	1.1%
Orlando-Kissimmee-Sanford MSA	1,517,500	1,518,500	1,507,900	-1,000	-0.1%	9,600	0.6%
Palm Bay-Melbourne-Titusville MSA	260,100	261,100	258,800	-1,000	-0.4%	1,300	0.5%
Panama City-Panama City Beach MSA	90,700	90,800	91,900	-100	-0.1%	-1,200	-1.3%
Pensacola -Ferry Pass-Brent MSA	201,200	201,800	201,200	-600	-0.3%	0	*
Port St. Lucie MSA	177,900	178,600	177,700	-700	-0.4%	200	0.1%
Punta Gorda MSA	59,200	59,000	58,100	200	0.3%	1,100	1.9%
Sebastian-Vero Beach MSA	59,500	59,400	59,400	100	0.2%	100	0.2%
Sebring MSA	28,600	28,700	28,800	-100	-0.3%	-200	-0.7%
Tallahassee MSA	202,700	202,600	204,000	100	*	-1,300	-0.6%
Tampa - St. Petersburg - Clearwater MSA	1,567,300	1,564,000	1,552,300	3,300	0.2%	15,000	-1.0%
St. Petersburg - Clearwater - Largo Division	487,700	487,800	483,900	-100	*	3,800	0.8%
Tampa Division	1,080,800	1,083,900	1,066,000	-3,100	-0.3%	14,800	1.4%
Wildwood-The Villages MSA	41,800	41,900	41,600	-100	-0.2%	200	0.5%

Released: January 07, 2026

p = preliminary, r = revised

\* - less than 0.1 percent

## FLORIDA POCKET CARD



FloridaCommerce  
Bureau of Workforce Statistics and Economic Research  
January 7, 2026 Release Date  
November 2025 Data  
www.floridajobs.com

**Ron DeSantis**  
Governor

**J. Alex Kelly**  
Secretary

### Unemployment Rates (%)

(seasonally adjusted)

	November 2025	October 2025	November 2024
United States	4.6	-	4.2
Florida	4.2	-	3.5

### Unemployment

United States	7,831,000	-	7,121,000
Florida	466,000	-	386,000

### Unemployment Rates (%)

(not seasonally adjusted)

#### by Metropolitan Statistical Area and Metropolitan Division

United States	4.3	-	4.0
Florida	4.9	-	3.5
Cape Coral-Fort Myers MSA	5.5	-	3.7
Crestview-Fort Walton Beach-Destin MSA	5.0	-	3.3
Deltona-Daytona Beach-Ormond Beach MSA	5.8	-	4.1
Gainesville MSA	5.8	-	4.0
Homosassa Springs MSA	7.5	-	5.2
Jacksonville MSA	5.1	-	3.5
Lakeland-Winter Haven MSA	6.0	-	4.3
Miami-Fort Lauderdale-West Palm Beach MSA	4.1	-	2.9
Fort Lauderdale-Pompano Beach-Sunrise MD	4.6	-	3.2
Miami-Miami Beach-Kendall MD	3.2	-	2.4
West Palm Beach-Boca Raton-Delray Beach MD	5.0	-	3.5
Naples-Marco Island MSA	5.2	-	3.5
North Port-Sarasota-Bradenton MSA	5.5	-	3.8
Ocala MSA	6.3	-	4.3
Orlando-Kissimmee-Sanford MSA	4.8	-	3.4
Palm Bay-Melbourne-Titusville MSA	5.4	-	3.6
Panama City-Panama City Beach MSA	5.3	-	3.5
Pensacola-Ferry Pass-Brent MSA	5.5	-	3.7
Port St. Lucie MSA	5.6	-	3.9
Punta Gorda MSA	6.3	-	4.6
Sebastian-Vero Beach MSA	6.2	-	4.2
Sebring MSA	7.3	-	4.9
Tallahassee MSA	5.4	-	3.7
Tampa-St. Petersburg-Clearwater MSA	5.0	-	3.7
St. Petersburg-Clearwater-Largo MD	4.8	-	3.7
Tampa MD	5.1	-	3.7
Wildwood-The Villages MSA	8.9	-	5.9

- Note: Unemployment and labor force statistics for October 2025 are not available due to a lapse in federal data collection activities.

## Nonagricultural Employment by Industry

(seasonally adjusted)

	November 2025	November 2024	Level Change	Percent Change
United States	159,552,000	158,619,000	933,000	0.6
Florida	10,047,900	9,972,600	75,300	0.8
<b>by Industry</b>				
Construction	649,600	654,200	-4,600	-0.7
Manufacturing	427,500	429,200	-1,700	-0.4
Trade, Transportation, and Utilities	2,020,800	2,002,500	18,300	0.9
Information	160,000	155,600	4,400	2.8
Financial Activities	687,400	684,500	2,900	0.4
Professional and Business Services	1,619,200	1,617,100	2,100	0.1
Education and Health Services	1,603,100	1,554,100	49,000	3.2
Leisure and Hospitality	1,321,800	1,322,500	-700	-0.1
Other Services	382,600	382,200	400	0.1
Total Government	1,170,300	1,165,100	5,200	0.4

## Nonagricultural Employment by Area

(not seasonally adjusted)

United States	160,652,000	159,882,000	770,000	0.5
Florida	10,134,300	10,069,700	64,600	0.6

### by Metropolitan Statistical Area and Metropolitan Division

Cape Coral-Fort Myers MSA	318,800	315,700	3,100	1.0
Crestview-Fort Walton Beach-Destin MSA	130,200	131,200	-1,000	-0.8
Deltona-Daytona Beach-Ormond Beach MSA	231,000	230,300	700	0.3
Gainesville MSA	170,900	169,500	1,400	0.8
Homosassa Springs MSA	36,300	36,300	0	0.0
Jacksonville MSA	826,900	816,400	10,500	1.3
Lakeland-Winter Haven MSA	282,000	279,400	2,600	0.9
Miami-Fort Lauderdale-West Palm Beach MSA	3,021,000	3,002,600	18,400	0.6
Fort Lauderdale-Pompano Beach-Sunrise MD	941,400	938,500	2,900	0.3
Miami-Miami Beach-Kendall MD	1,362,000	1,356,100	5,900	0.4
West Palm Beach-Boca Raton-Delray Beach MD	717,600	708,000	9,600	1.4
Naples-Marco Island MSA	178,200	178,100	100	0.1
North Port-Bradenton-Sarasota MSA	356,900	353,900	3,000	0.8
Ocala MSA	126,000	124,800	1,200	1.0
Orlando-Kissimmee-Sanford MSA	1,530,200	1,523,000	7,200	0.5
Palm Bay-Melbourne-Titusville MSA	262,300	261,100	1,200	0.5
Panama City-Panama City Beach MSA	90,600	92,000	-1,400	-1.5
Pensacola-Ferry Pass-Brent MSA	202,100	202,600	-500	-0.2
Port St. Lucie MSA	179,700	179,300	400	0.2
Punta Gorda MSA	59,700	58,700	1,000	1.7
Sebastian-Vero Beach MSA	59,800	59,900	-100	-0.2
Sebring MSA	28,800	29,100	-300	-1.0
Tallahassee MSA	205,400	207,000	-1,600	-0.8
Tampa-St. Petersburg-Clearwater MSA	1,581,400	1,562,800	18,600	1.2
St. Petersburg-Clearwater-Largo MD	490,500	486,900	3,600	0.7
Tampa MD	1,090,900	1,075,900	15,000	1.4
Wildwood-The Villages MSA	42,000	42,000	0	0.0

**Note:** \* indicates a value between  $\pm 0.1$  and 0.0 percent

**Source:** U.S. Department of Labor, Bureau of Labor Statistics, in cooperation with FloridaCommerce, Bureau of Workforce Statistics and Economic Research

**LABOR FORCE STATISTICS  
UNITED STATES  
SEASONALLY ADJUSTED**

**(Released December 16, 2025)**

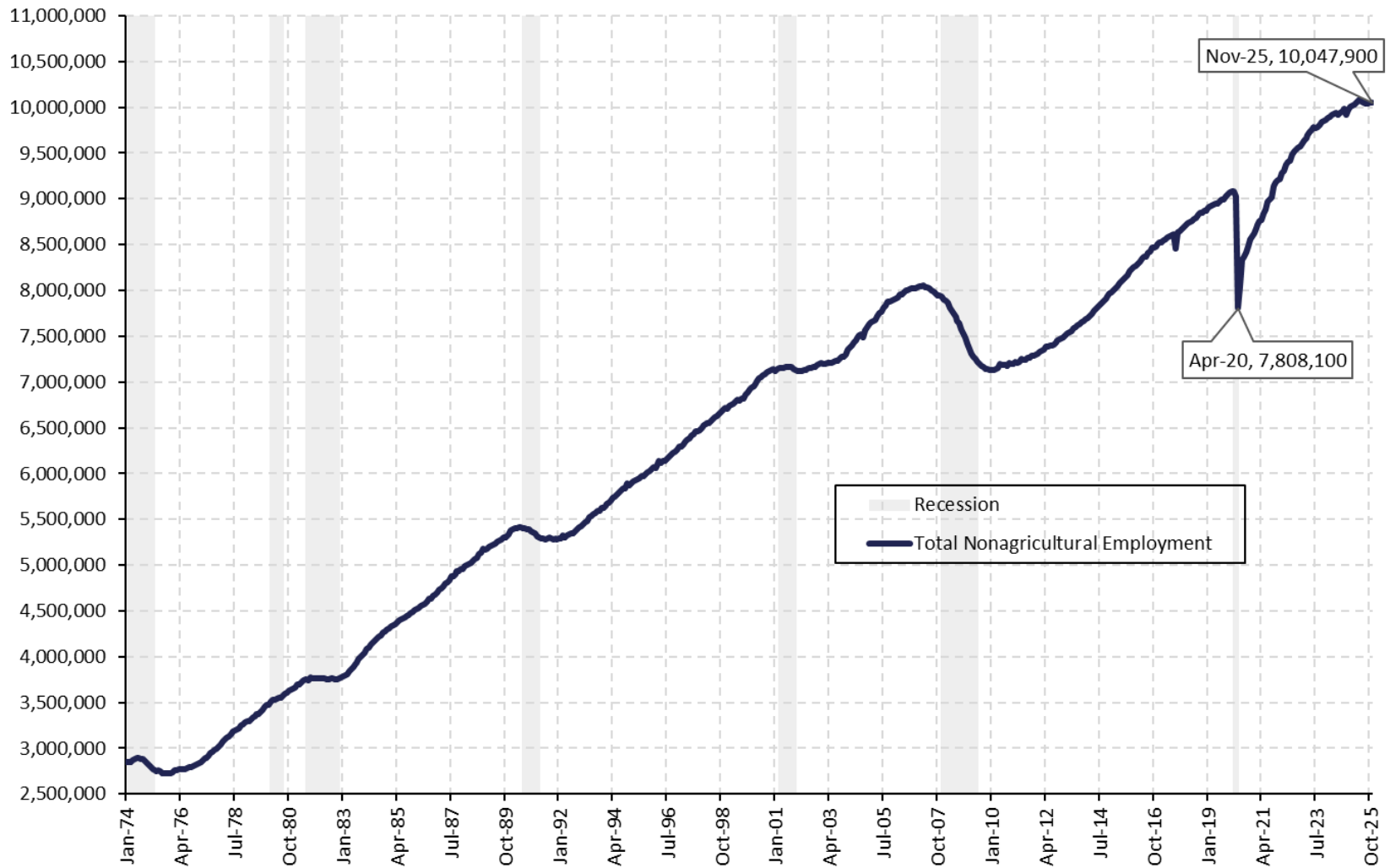
	Current Month November 2025	Month Ago October 2025	Year Ago November 2024	Over-the-Month Change		Over-the-Year Change	
				Level	Percent	Level	Percent
Civilian Labor Force	171,571,000	-	168,304,000	-	-	3,267,000	1.9%
Employment	163,741,000	-	161,183,000	-	-	2,558,000	1.6%
Unemployment	7,831,000	-	7,121,000	-	-	710,000	10.0%
Unemployment Rate (%)	4.6	-	4.2	-		0.4	
Total Nonagricultural Employment	159,552,000	159,488,000	158,619,000	64,000	*	933,000	0.6%

\*less than 0.1%

Unemployment and labor force statistics data for October 2025 were not collected due to the federal government shutdown.

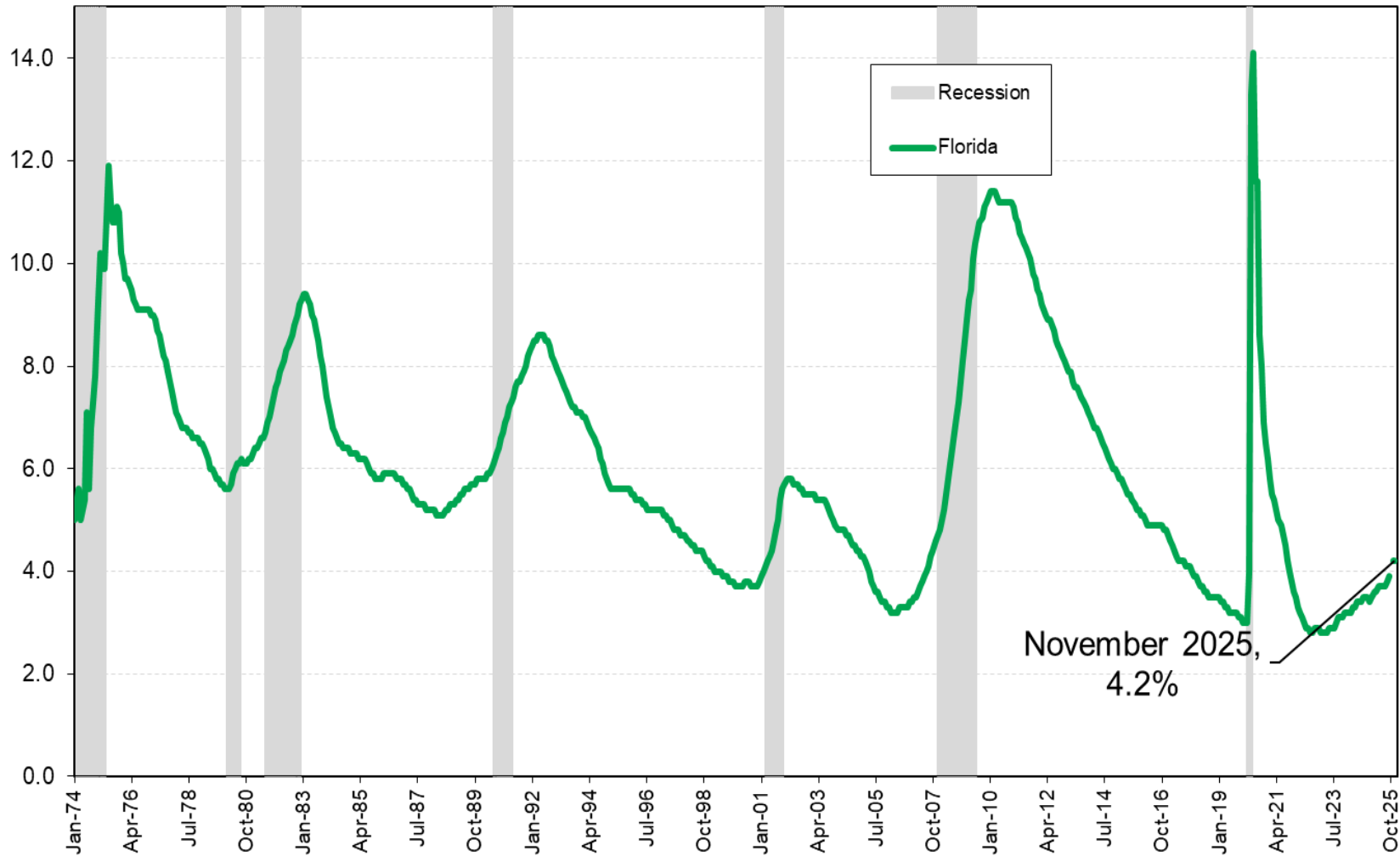
Source: U.S Department of Labor, Bureau of Labor Statistics.

**Florida**  
**Total Nonagricultural Employment, Seasonally Adjusted**  
**January 1974 - November 2025**



Source: U.S. Department of Labor, Bureau of Labor Statistics, Current Employment Statistics in cooperation with the Florida Department of Commerce, Bureau of Workforce Statistics & Economic Research. Prepared: January 2026

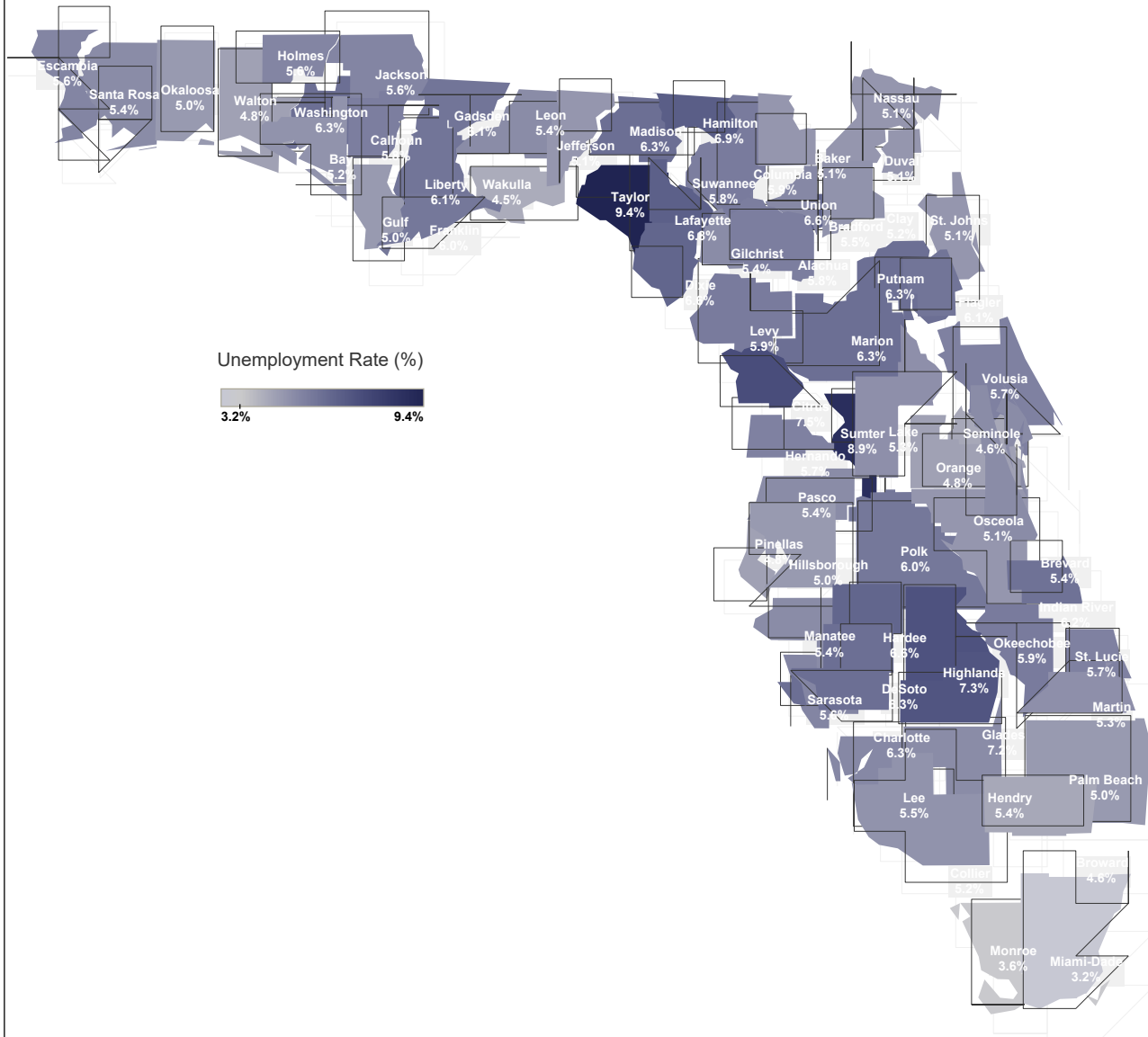
**Florida**  
**Unemployment Rates and Recessionary Periods, Seasonally Adjusted**  
**January 1974 - November 2025**



Source: U.S. Department of Labor, Bureau of Labor Statistics, Local Area Unemployment Statistics in cooperation with the Florida Department of Commerce, Bureau of Workforce Statistics & Economic Research. Prepared: January 2026



# Florida Unemployment Rates by County (Not Seasonally Adjusted) November 2025



© OpenStreetMap

Source: U.S. Department of Labor, Bureau of Labor Statistics, Local Area Unemployment Statistics Program in cooperation with FloridaCommerce, Bureau of Workforce Statistics and Economic Research. Released January 7, 2026